

Australian Government
Climate Active
Public Disclosure Summary




Organisation name: Meridian Energy Australia

Accreditation: Organisation

Reporting period: Calendar year 2019

Declaration

To the best of my knowledge, the information provided in this Public Disclosure Summary is true and correct and meets the requirements of the Climate Active Carbon Neutral Program.

Signature: 	Date: 31 August 2020
Name of Signatory: Clementine Smith	
Position of Signatory: General Counsel	

Public Disclosure Summary documents are prepared by the submitting organisation. The material in Public Disclosure Summary documents represents the views of the organisation and do not necessarily reflect the views of the Commonwealth. The Commonwealth does not guarantee the accuracy of the contents of the Public Disclosure Summary documents and disclaims liability for any loss arising from the use of the document for any purpose.

1. Carbon neutral information

1A. Introduction

Meridian Energy Australia Pty Ltd (**MEA**) has a proud heritage of harnessing our earth's energy in generating affordable electricity through the Mt Millar and Mt Mercer wind farms, as well as the Hume, Burrinjuck and Keepit hydroelectric dams. Combined these assets generate approximately 874 GWh of electricity, enough to supply approximately 174,000¹ homes.

MEA's retail arm Powershop Australia Pty Ltd (**Powershop**) seeks to drive investment in renewable energy through Powershop's Your Community Energy electricity product, partnership with the community owned Hepburn Wind Farm and Power Purchasing Agreements with renewable energy generators.

This Public Disclosure Statement (**PDS**) supports MEA's ongoing accreditation under the Climate Active, Carbon Neutral Program that covers MEA's Carbon Neutral corporate 'Organisation' accreditation. It details for the 1 January 2019 to 31 December 2019 period:

- All emissions associated with the operation of the business, except for the electricity and gas product sold by Powershop;
- how we define and measure those emissions; and
- how we use Verified Carbon Units and Carbon Emissions Reduction certificates to neutralise the impact made by business operations.

As touched on above, the Powershop retail business is also accredited under the Climate Active program for the electricity and gas 'Product' retailed to customers. The two 'Product' accreditations have a separate PDS's.

MEA has prepared this inventory based on the Climate Active standard and its associated guidance documents.

Based on an operational consolidation approach, the entities and sites included are:

- Meridian Energy Australia Pty Ltd;
- GSP Energy Pty Ltd (owns and operates 3 hydro power stations);
- Mt Mercer Windfarm Pty Ltd;
- Mt Millar Wind Farm Pty Ltd; and
- Powershop Australia Pty Ltd.

¹ <https://www.powershop.com.au/our-generation/>

1B. Emission sources within certification boundary

Quantified sources

MEA has identified the following emission sources within our emission boundary.

Scope	Emissions	Source
1	Stationary diesel usage (standby generator testing)	MEA is required to use a generator onsite for testing equipment and other onsite works.
1	Mobile combustion - owned vehicles diesel	MEA generation site employees are provided a vehicle for work usage.
1	Mobile combustion - contractor diesel	MEA uses a number of contractors across its various sites for maintenance works.
1	SF6 gas	MEA holds SF6 gas at its generation sites in switchgear.
2	Electricity consumption	MEA uses electricity across its various sites.
3	Electricity consumption, consumption of purchased electricity by end users.	MEA uses electricity across its various sites.
3	Taxi spend	MEA staff use taxis and rideshare companies in the course of business.
3	Air travel	MEA staff use air travel in the course of business.
3	Mobile combustion – hire cars	While travelling, MEA staff use hire cars.
3	Accommodation	When travelling multiple days, MEA staff use accommodation.
3	Base building energy usage	MEA's head office in Melbourne is shared with multiple tenants, and as such MEA shares the energy usage for common areas within the building.
3	Corporate catering	MEA use corporate catering for events and other basic office food essentials (fruit and snacks).
3	Waste	MEA's sites generate waste.

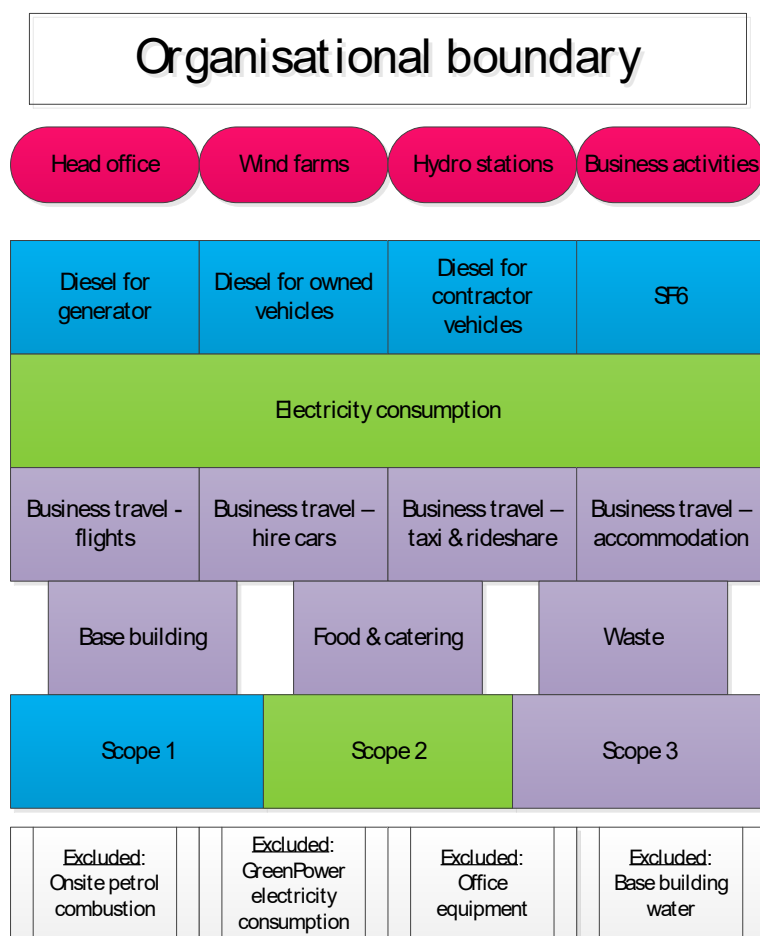
Excluded sources

The following emission sources have been excluded in line with the Climate Active standard for Organisations. The impact of excluding these sources does not materially affect the overall total emissions

Scope	Emissions	Source
1	Onsite petrol combustion	MEA use small amounts of petrol at the generation sites, which only accounts for 0.012 t CO ₂ -e, less than 1% of emissions.
2	Electricity consumption	MEA's head office (excluding base building) electricity usage was 85.51 MWh of 100% accredited GreenPower, and is excluded from this inventory due to it being a renewable energy source.
3	Office equipment	MEA has accounted for food, waste and corporate catering, but has excluded miscellaneous items such as stationary and deliveries are excluded. This information is difficult to gather relative to the estimated size of emissions.
3	Base building water	MEA's share of the base building water usage is immaterial

		to this inventory making up less than 1% of emissions.
--	--	--

1C. Diagram of the certification boundary



2. Emissions reduction measures

2A. Emissions over time

MEA has experienced a growth in emissions attributable to the growth and size of the business since the base year reporting period. Since its base year, MEA now owns and operates three hydro power stations which have led to an increase in operational activities, and the number of full time employees has also increased.

In comparison to the previous reporting period, the following sources have led to a change in emissions:

1. Last reporting period was an 18 month period compared to a normal 12 month period. MEA did this to change the reporting period from financial year to calendar year. A calendar year report better aligns with other reporting obligations that contribute to this inventory (GreenPower). It also enabled Powershop to introduce a gas carbon neutral product.
2. The 18 month versus 12 month report has led to understandable fluctuations in emissions.
3. The number of contractors visiting MEA sites for maintenance in 2019 increased. This led to an increase of overall scope 1 emissions.

Table 1. Emissions since base year

	Base Year: 2014 - 2015	Year 1: 2015 - 2016	Year 2: 2016 - 2017	Year 3: 2017 – 2018 (18 month report)	Current year: 2019
Scope 1	131	154	132	381	1,191
Scope 2	35	0	0	806	598
Scope 3	106	145	173	570	456
Total	272 t CO₂-e	299 t CO₂-e	305 t CO₂-e	1,757 t CO₂-e	2,245 t CO₂-e

2B. Emissions reduction strategy

MEA has an ongoing commitment to reduce air travel emissions per full time employee. In the 2019 reporting period MEA reduced air travel emissions by 1.32 tCO₂-e per FTE.

2C. Emissions reduction actions

MEA identified a need to better manage our head office waste in order to divert waste away from landfill where possible. During the 2019 reporting period, MEA changed its waste procedures and it now splits waste into:

- Municipal waste;
- Paper and cardboard;
- Food waste; and
- Soft plastics.

The change in waste management procedures was led by our 'Health, Wellness, Safety and Sustainability' team in conjunction with the 'Goodcycels' (a Melbourne social enterprise) and building management.

MEA'S waste management program led too:

- 5 tonnes of paper and cardboard being diverted from landfill; and
- 1 tonne of food waste was diverted from landfill.

3. Emissions summary

Table 2: Emissions Summary		
Scope	Emission source	t CO₂-e
1	Stationary diesel - (standby generator - Testing)	34.94
1	Transport diesel, post 2004 vehicles – owned vehicles	101.71
1	SF6	58.82
1	Transport petrol, post 2004 vehicles – contractor vehicles	995.36
2	Purchased electricity – Victoria	464
2	Purchased electricity – NSW	186.90

Table 2: Emissions Summary		
Scope	Emission source	t CO ₂ -e
2	Purchased electricity - SA	25.79
3	Purchased electricity – Victoria	41
3	Purchased electricity – NSW	18.46
3	Purchased electricity – SA	3.52
3	Travel-Hire car	10.12
3	Travel-Taxi	5.32
3	Business travel (air travel - domestic)	46.13
3	Business travel (air travel - short haul international)	76.32
3	Business travel (air travel - long haul international)	14.54
3	Accommodation	45.42
3	Base Building Electricity	29.73
3	Base Building Gas	12.16
3	Waste- Municipal solid waste	82.84
3	Waste - paper and cardboard	14.01
3	Waste - food	1.73
3	Corporate catering	62
Total Gross Emissions (including GreenPower purchases)		2,330.82
GreenPower Purchases (expressed in tCO ₂ -e)		- 85.51
Total Net Emissions		2,245.28

4. Carbon offsets

4A. Offsets summary

Table 3. Offsets Summary

Projects supported by offset purchase	Eligible offset units	Registry	Cancellation date	Serial numbers (including hyperlink to registry transaction record)	Vintage	Quantity
Redd Forests Grouped Project: Protection of Tasmanian Native Forest	VCUs	VERRA	21 May 2020	3291-148257764-148257783-VCU-016-MER-AU-14-641-16042012-15042013-0 https://registry.verra.org/myModule/rpt/myrpt.asp?r=206&h=18121	2013	20
Redd Forests Grouped Project: Protection of Tasmanian Native Forest	VCUs	VERRA	21 May 2020	4147-176345622-176346891-VCU-016-MER-AU-14-641-16042012-15042013-0 https://registry.verra.org/myModule/rpt/myrpt.asp?r=206&h=18527	2013	1,270
Redd Forests Grouped Project: Protection of Tasmanian Native Forest	VCUs	VERRA	21 May 2020	3291-148271818-148272672-VCU-016-MER-AU-14-641-16042012-15042013-0 https://registry.verra.org/myModule/rpt/myrpt.asp?r=206&h=16913	2013	855
Redd Forests Grouped Project: Protection of Tasmanian Native Forest	VCUs	VERRA	21 May 2020	3291-148286766-148286965-VCU-016-MER-AU-14-641-16042012-15042013-0 https://registry.verra.org/myModule/rpt/myrpt.asp?r=206&h=15635	2013	200
Total offsets cancelled						2,345
Total offsets banked for use future years:						100
Serial number range: 3291-148286766-148286965-VCU-016-MER-AU-14-641-16042012-15042013-0						

4B. Offsets purchasing and retirement strategy

MEA operates an offsetting in arrears strategy, whereby our Energy Markets team procures offset certificates in advance and then retire the appropriate amount to bring net emissions to zero each reporting period.

5. Use of trade mark

Table 4. Trade mark register	
Where used	Logo type
Blog post: https://www.powershop.com.au/blog/its-official-powershop-is-the-only-power-company-to-be-accredited-100-carbon-neutral-for-both-gas-and-electricity/	Certified Organisation
Website: https://www.powershop.com.au/about-us/	Certified Organisation