

Australian Government  
Climate Active Public Disclosure Statement

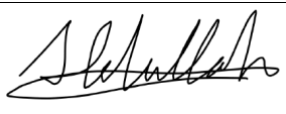


NAME OF CERTIFIED ENTITY: Pablo & Rusty's Pty Ltd

REPORTING PERIOD: Projection of 1 January 2020 – 31 December 2020

Declaration

To the best of my knowledge, the information provided in this Public Disclosure Statement is true and correct and meets the requirements of the Climate Active Carbon Neutral Standard.

Signature 	Date 24 <sup>th</sup> August 2020
Name of Signatory	Abdullah Ramay
Position of Signatory	Chief Executive Officer



**Australian Government**  
**Department of Industry, Science,  
Energy and Resources**

Public Disclosure Statement documents are prepared by the submitting organisation. The material in Public Disclosure Statement documents represents the views of the organisation and do not necessarily reflect the views of the Commonwealth. The Commonwealth does not guarantee the accuracy of the contents of the Public Disclosure Statement documents and disclaims liability for any loss arising from the use of the document for any purpose.

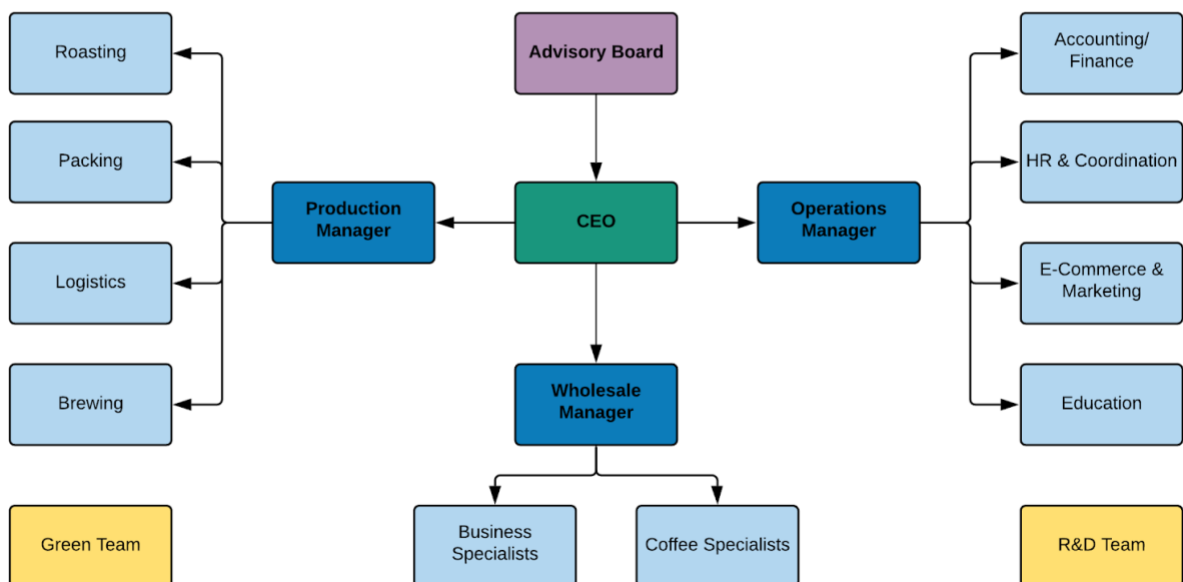
# 1. Carbon neutral information

## Description of certification

Australian business operations of Pablo & Rusty’s coffee roasters; ABN 20 137 878 589.

## Organisation description

Pablo & Rusty’s Coffee Roasters is a Sydney based coffee roaster. They source coffee beans both directly and through brokers from all over the world including Brazil, Colombia, Yunnan (China), Ethiopia, Indonesia and many others.

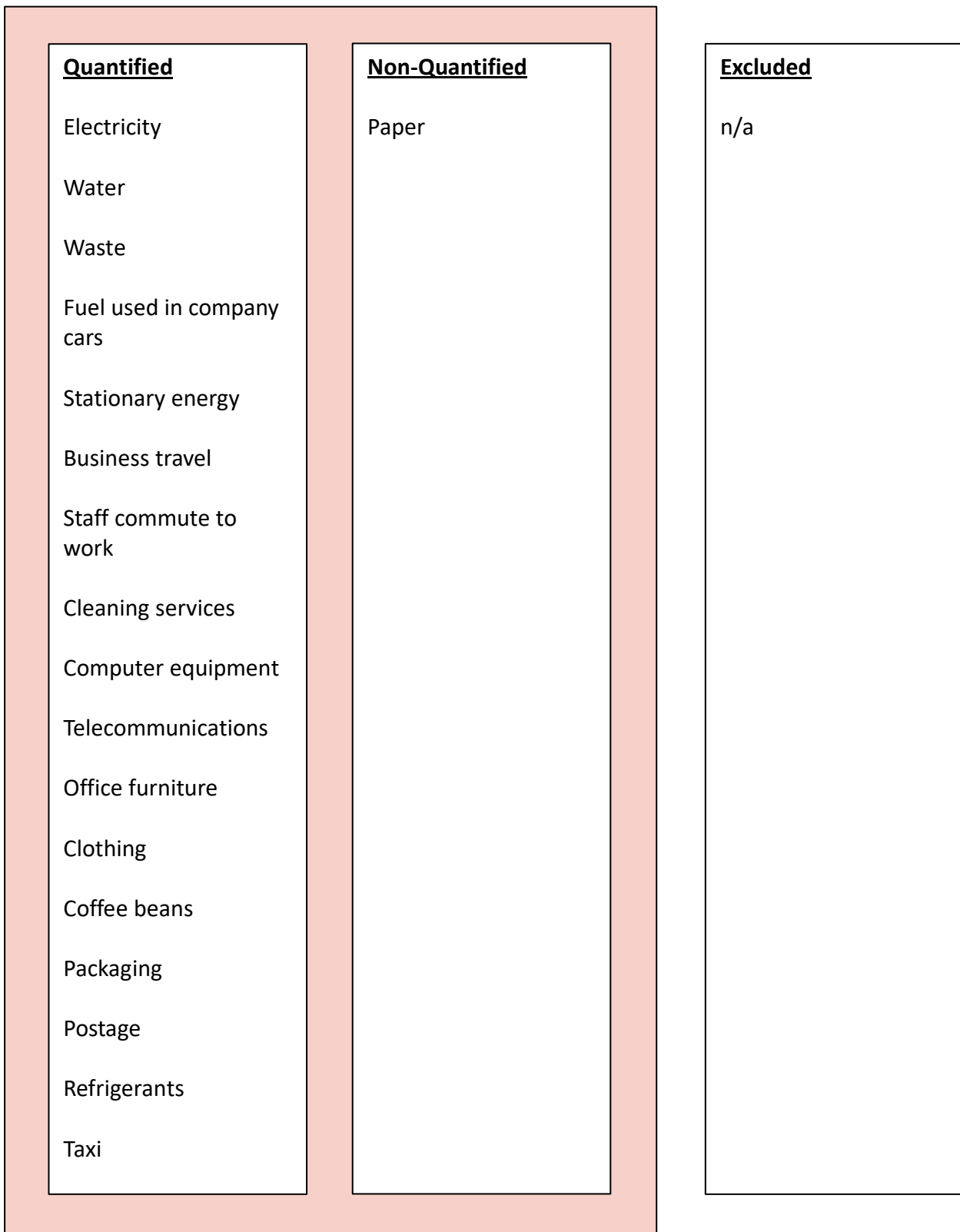


## Emissions reduction strategy

We will continue to monitor and invest in more energy efficient equipment and services where feasible. We will also educate our team and broader network more on proper use of energy to ensure less waste and maximum efficiency. We will continue to partner with suppliers that take emission reductions seriously.

## 2. Emission Boundary

### Diagram of the certification boundary



Non-quantified sources

Paper use was considered so small as to be immaterial to the overall inventory and was therefore non-quantified.

Excluded sources (outside of certification boundary)

The emissions relating to the operation of Pablo & Rusty's cafés are managed under a separate ABN and are outside of the operational boundary of this certification.

**3. Emissions summary**

Table 3.1 Emissions Summary	
Emission source category	tonnes CO <sub>2</sub> -e
Accommodation and facilities	3.491
Air Transport (km)	22.100
Cleaning and Chemicals	0.505
Electricity	73.284
Food	1,381.719
ICT services and equipment	6.636
Land and Sea Transport (fuel)	37.795
Land and Sea Transport (km)	15.919
Office equipment & supplies	44.972
Postage, courier and freight	1,231.860
Products	93.606
Refrigerants	3.955
Stationary Energy	180.732
Taxi and Uber	0.027
Waste	7.266
Water	0.196
<b>Total Net Emissions</b>	<b>3,104.062</b>

Uplift factors

Table 3.2 Uplift factors	
Reason for uplift factor	tonnes CO <sub>2</sub> -e
n/a	n/a
Total Footprint to offset (uplift factors + net emissions)	<b>3,104.062</b>

Carbon Neutral products

n/a

Electricity Summary

Electricity was calculated using a Location-based approach.

The Climate Active team are consulting on the use of a market vs location-based approach for electricity accounting with a view to finalising a policy decision for the carbon neutral certification by July 2020. Given a decision is still pending on the accounting way forward, a summary of emissions using both measures has been provided for full disclosure and to ensure year on year comparisons can be made.

**Table 3.3 Market-based approach Electricity summary**

Electricity Inventory items	kWh	Emissions (kg CO <sub>2</sub> e)
Electricity Renewables	15,406	0.00
Electricity Carbon Neutral Power	0	0.00
Electricity Remaining	65,865	71,206.33
Renewable electricity percentage	19%	
Net emissions (Market based approach)		<b>71,206</b>

Table 3.4 Location-based summary

State/ Territory	Electricity Inventory items	kWh	Full Emission factor (Scope 2 +3)	Emissions (tonnes CO <sub>2</sub> e)
ACT/NSW	Electricity Renewables	-	-0.90	0.00
ACT/NSW	Electricity Carbon Neutral Power	-	-0.90	0.00
ACT/NSW	Netted off (exported on-site generation)	1,558	-0.81	-1,262.06
ACT/NSW	Electricity Total	82,829	0.90	74,546.10
	Total net electricity emissions (Location based)		0.00	73,284.04

#### 4. Carbon offsets

Offset purchasing strategy: forward purchasing for 2020.

**Table 4.1 Forward purchasing summary**

1. Total offsets previously forward purchased for this reporting period	0
2. Total offsets required for this reporting period	3,105
3. Net offset balance for this reporting period	3,105
4. Total offsets to be forward purchased for next reporting period	0

Table 4.2 Offsets Summary

<b>1. Total offsets required for this report</b>				3,105					
<b>2. Offsets retired in previous reports and used in this report</b>				0					
<b>3. Net offsets required for this report</b>				3,105					
<b>Project description</b>	<b>Eligible offset units type</b>	<b>Registry unit retired in</b>	<b>Date retired</b>	<b>Serial number (including hyperlink to registry transaction record)</b>	<b>Vintage</b>	<b>Quantity (tonnes CO2-e)</b>	<b>Quantity used for previous report</b>	<b>Quantity to be banked for future years</b>	<b>Quantity to be used this report</b>
300MW JHPL Hydropower ROR VCUs India	VCUs	Verra	19 <sup>th</sup> August 2020	<a href="#">7919-440992605-440995709-VCU-001-MER-IN-1-92-01012013-30062013-0</a>	2013	3,105	0	0	3,105
<b>Total offsets retired this report and used in this report</b>									3,105
<b>Total offsets retired this report and banked for future reports</b>									0*

\*offsets retired in this report are for the first year of certification calendar year 2020.



## 5. Use of trade mark

Table 5.1

Description where trademark used	Logo type
Website	Certified organisation
Public reports such as Impact Report	Certified organisation
Digital marketing and Social Media	Certified organisation
Printed Marketing Collateral	Certified organisation
Product Packaging	Certified organisation
Other marketing initiatives	Certified organisation

## 6. Additional information

## Appendix 1: Excluded emissions

To be deemed relevant an emission must meet two of the five relevance criteria. Excluded emissions are detailed below against each of the five criteria.

	<b>Relevance Test</b>				
<b>Excluded Emission</b>	<i>The emissions from a particular source are likely to be large relative to the organisation's electricity, stationary energy and fuel emissions</i>	<i>The emissions from a particular source contribute to the organisation's greenhouse gas risk exposure.</i>	<i>Key stakeholders deem the emissions from a particular source are relevant.</i>	<i>The responsible entity has the potential to influence the reduction of emissions from a particular source.</i>	<i>The emissions are from outsourced activities previously undertaken within the organisation's boundary, or from outsourced activities typically undertaken within the boundary for comparable organisations.</i>
n/a	n/a				