



# **PUBLIC DISCLOSURE STATEMENT**

**CITY OF ADELAIDE**

**ORGANISATION CERTIFICATION**

**FY2020–21**

Australian Government  
**Climate Active**  
**Public Disclosure Statement**



NAME OF CERTIFIED ENTITY	City of Adelaide
REPORTING PERIOD	1 July 2020 – 30 June 2021
DECLARATION	<p><i>To the best of my knowledge, the information provided in this public disclosure statement is true and correct and meets the requirements of the Climate Active Carbon Neutral Standard.</i></p> <p><i>Clare Mockler</i></p>
	<p>Clare Mockler <b>Chief Executive Officer</b></p>



**Australian Government**  
**Department of Industry, Science,  
Energy and Resources**

Public Disclosure Statement documents are prepared by the submitting organisation. The material in the Public Disclosure Statement documents represents the views of the organisation and do not necessarily reflect the views of the Commonwealth. The Commonwealth does not guarantee the accuracy of the contents of the Public Disclosure Statement document and disclaims liability for any loss arising from the use of the document for any purpose.

Version September 2021. To be used for FY20/21 reporting onwards.



# 1. CERTIFICATION SUMMARY

TOTAL EMISSIONS OFFSET	11,765 tCO <sub>2</sub> -e
OFFSETS BOUGHT	75.4% CERs, 20.3% VCU, 4.3% ACCU
RENEWABLE ELECTRICITY	98%
TECHNICAL ASSESSMENT	9 June 2020 Dr Adina Cirtog Pangolin Associates Next technical assessment due: 8 June 2023

## Contents

1. Certification summary.....	3
2. Carbon neutral information.....	4
3. Emissions boundary.....	9
4. Emissions reductions.....	12
5. Emissions summary.....	14
6. Carbon offsets.....	16
7. Renewable Energy Certificate (REC) Summary.....	20
Appendix A: Additional Information.....	21
Appendix B: Electricity summary.....	22
Appendix C: Inside emissions boundary.....	23
Appendix D: Outside emissions boundary.....	24

## 2. CARBON NEUTRAL INFORMATION

### Description of certification

The Corporation of the City of Adelaide, known as the 'City of Adelaide' or 'CoA' is one of 68 councils in South Australia operating as a public statutory body incorporated under the South Australia Local Government Act 1999. The City of Adelaide includes the suburbs of Adelaide and North Adelaide in the state of South Australia. Adelaide is the capital of South Australia and is a mixed-use area, with residential, commercial, institutional, medical, educational, cultural and entertainment land uses, and substantial Park Lands.

The City of Adelaide is carbon neutral certified under the Climate Active Carbon Neutral Standard for Organisations from financial year 2020 (FY2019/20) onward. This Public Disclosure Summary (PDS) presents our on-going certification (FY2020/21) emissions for the Australian business operations of the corporation of the City of Adelaide.

*“We must take decisive actions to both reduce greenhouse gas (GHG) emissions and adapt to a changing climate”*

*Sandy Verschoor*

### Organisation description

The City of Adelaide (ABN 20 903 762 572) is responsible for a range of functions that provide for the governance and management of the local area, in particular representing the interests of its community as a responsible decision maker, providing and developing public services and facilities to support a socially just and ecologically sustainable community, delivering initiatives that improve the quality of life for its residents and performing legislative duties in an open, responsive and accountable way.

An extensive range of public infrastructure and diverse community facilities such as the Adelaide Aquatic Centre, North Adelaide Golf Course, green waste facility, nursery, car parks, pump houses, public toilets, bus stations and shelters, community hubs, event venues, parks and gardens are controlled by the CoA while subsidiaries, including Adelaide Central Market Authority (ACMA) and Adelaide Economic Development Agency (AEDA) which comprises of Rundle Mall Management Authority team, Visitor Economy, Business & Investment, Marketing and Digital Strategy supports the delivery of an economically vibrant and liveable city.

The majority of the CoA's services and administrative functions are undertaken from within a central administrative building, named the Colonel Light Centre (CLC) in Adelaide's central business district, adjacent to the Adelaide Town Hall. Additional operational functions are performed at several external sites and facilities located throughout the municipality, which include London Road Depot in Keswick and the Green Waste and Nursery Facility in North Adelaide. The Council owns and/or operates more than 250 buildings, parks, gardens, and other assets.

The services provided by CoA include property, economic, human, recreational and cultural services. The Council also enforces state and local laws relating to matters such as land use, planning, environment protection, public health, traffic and parking, and animal management.

Below is a summary of the Services undertaken by the City of Adelaide:

#### **Arts, Culture and Events**

- Enhances the cultural and creative elements of the City, enlivening it with things to do and see, and making the rich heritage of the City available to all.

#### **Community Development**

- Creates opportunities for people to connect, learn, grow and work with others to enhance their local communities.

#### **Community Safety**

- Ensures a safe and healthy city environment for people to visit, work study, live and do business.

#### **Environmental Sustainability**

- Demonstrates environmental leadership through our goals to become a sustainable carbon neutral and climate resilient city.

#### **Library Services**

- Educate, engage and enable people to create, connect and be inspired, through free access to information and ideas, activities and programs, innovate technology and a range of resources which support lifelong learning.

#### **Park Lands and Open Space**

- Encourages healthy lifestyles and experiences, through the provision, maintenance, protection and enhancement of our unique Park Lands, open spaces and community infrastructure.

#### **Parking**

- Drives the availability and accessibility of car parking in the City and North Adelaide.

#### **Planning, Building and Heritage**

- Ensures a well-planned and developed city, with consideration to the local area and protected heritage listings within the bounds of policy and legislation

#### **Property Management and Development**

- Leverages the development and management of Council's property assets and identifies opportunities in partnership with the private and public sectors, to generate income, create employment opportunities, and reinvigorate city precincts, to build a prosperous city.

#### **Resource Recovery and Waste Management**

- Educates and encourages the community to redefine the concept of waste, recover more resources and build a circular economy, whilst keeping the community clean and hygienic through effective management and collection of waste.

#### **Social and Economic Planning**

- Creates liveable communities, vibrant economies and social cohesion through a well-designed and welcoming city, and resilient community.

#### **Sports and Recreation**

- Encourages health and wellbeing by providing places, spaces and opportunities to access a range of community sports and recreation facilities throughout the City.

#### **Streets and Transportation**

- Supports current needs and future growth for the delivery of safe, convenient, accessible, clean and appealing ways for people to move around the City.

#### **Corporate Services and Subsidiaries.**

- Corporate services provide effective and efficient services and insights to strengthen and grow our organisational capability and support a culture of accountability, transparency and innovation.



- |  |                          |  |
|--|--------------------------|--|
| 1. Adelaide Aquatic Centre                     | 8. UPark Rundle Street   | 17. Adelaide Central Bus Station         |
| 2. North Adelaide Community Centre and Library | 9. UPark Frome Street    | 18. Park Lands Central                   |
| 3. North Adelaide Golf Course                  | 10. Park Lands West      | 19. Adelaide Central Market Arcade       |
| 4. Park Lands North                            | 11. UPark Topham Mall    | 20. Adelaide South West Community Centre |
| 5. Rundle Mall                                 | 12. Adelaide Town Hall   | 21. Box Factory Community Centre         |
| 6. Adelaide Visitor Information Centre         | 13. Colonel Light Centre | 22. Hutt Street Library                  |
| 7. Adelaide City Library                       | 14. UPark Wyatt Street   | 23. London Road Depot                    |
|  | 15. UPark Pirie Flinders | 24. Park Lands South                     |
|  | 16. Park Lands East      |  |

Figure 1: City of Adelaide boundary map

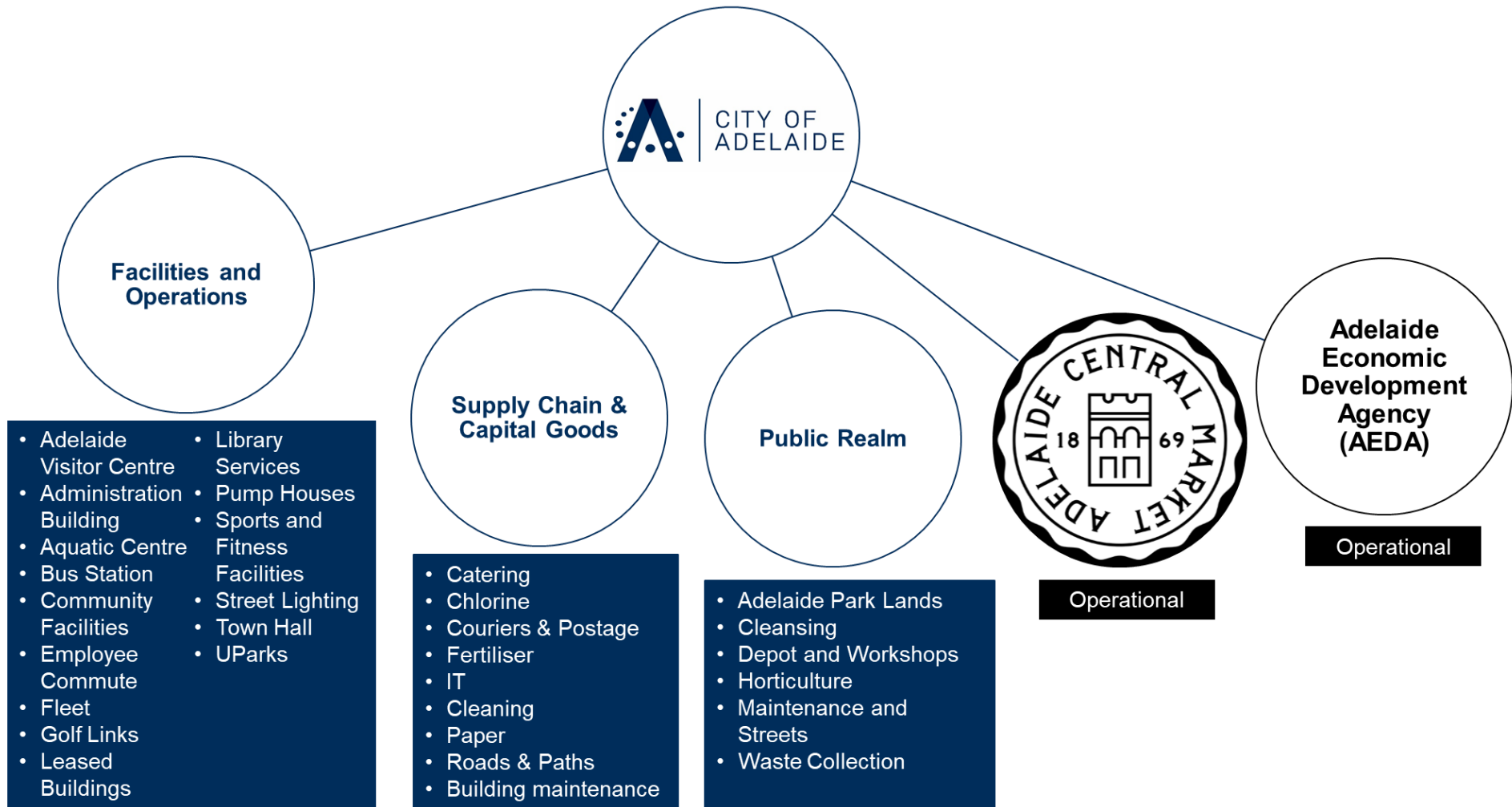


Figure 2: Organisational boundary - list of all activities City of Adelaide has full operational control over



## 3.EMISSIONS BOUNDARY

### Inside the emissions boundary

All emission sources listed in the emissions boundary are part of the carbon neutral claim.

**Quantified emissions** have been assessed as relevant and are quantified in the carbon inventory. This may include emissions that are not identified as arising due to the operations of the certified entity, however are **optionally included**.

**Non-quantified emissions** have been assessed as relevant and are captured within the emissions boundary, but are not measured (quantified) in the carbon inventory. All material emissions are accounted for through an uplift factor. Further detail is available at Appendix C.

### Outside the emissions boundary

**Excluded emissions** are those that have been assessed as not relevant to an organisation's or precinct's operations and are outside of its emissions boundary or are outside of the scope of the certification. These emissions are not part of the carbon neutral claim. Further detail is available at Appendix D.

## Inside emissions boundary

### Quantified

#### Scope 1

- Natural gas consumption in building
- Fleet consumption (Diesel, Petrol & LPG)
- Refrigerants
- Acetylene gas consumption
- Carbon dioxide

#### Scope 2

- Electricity consumption

#### Scope 3

- Water
- Purchased goods & services
- Cement & concrete
- Asphalt & bitumen
- Road building materials
- Natural gas extraction & production
- Couriers & postage
- Corporate waste disposal & treatment
- Business travel
- Employee commuting
- Electricity consumption from upstream leased assets (partly quantified)
- Municipal waste contractor fuel consumption
- Electricity consumption from downstream leased asset

### Non-quantified

- Events generation (New Year Eve event)
- Legal and conveyancing services
- Electricity consumption from upstream leased assets which electricity bills are paid by property owners
- Other purchased goods and services not captured in any other scopes

## Outside emission boundary

### Excluded

- Office equipment, office furniture, printers and multifunction devices
- General staff amenities
- Stationery (excluding paper and office equipment)
- Pest control
- Short and long-term storage
- Landfills that accept Council's waste
- Electricity consumption from downstream leased assets (tenants pay bills)
- Waste generated by residents and businesses

## **Data management plan for non-quantified sources**

There are no non-quantified sources in the emission boundary that require a data management plan.

# 4. EMISSIONS REDUCTIONS

## Emissions reduction strategy

### [City of Adelaide's 2020-2024 Strategic Plan](#)

The City of Adelaide's 2020-2024 Strategic Plan includes the priority of Environmental Leadership. Under this priority are the aims of achieving:

- One of the world's first carbon neutral cities by 2025, where sustainability is core
- A transition to low carbon and circular economies

One of the actions for achieving these aims was to implement the Carbon Neutral Strategy for the city and achieve carbon neutral certification for the City's operations.

### [Carbon Neutral Strategy 2015 – 2025](#)

The City of Adelaide developed a Carbon Neutral Strategy 2015 – 2025 which outlined our aspiration to be a carbon neutral city and set specific targets, priorities and measures of success.

In February 2021, the City of Adelaide achieved the target of carbon neutrality for our City's operations.

The 10 key priority areas identified to achieve carbon neutrality are listed below under Emission reduction actions.

### [Carbon Neutral Adelaide Action Plan 2016-2021](#)

Carbon Neutral Adelaide is a strategic partnership between the City of Adelaide and Government of South Australia to make the city of Adelaide one of the world's first carbon neutral cities.

The Carbon Neutral Adelaide Action Plan 2016-2021 sets out 104 actions for Council and Government under five key emissions reduction pathways, to progress carbon neutrality for the city.

## Emissions reduction actions

The Council has identified and implemented 10 key projects to reduce operational carbon emission and enable the City of Adelaide to become a Climate Active certified carbon neutral organisation.

- Utility management business improvement – Managing the Council's utilities to save on bills and cut carbon emissions.
- Improving buildings – Improving on past savings to make our buildings perform better, save money on bills and contribute to staff comfort and wellbeing.
- LED streetlights – Completing LED replacement for all of Council's 5,000 streetlight assets across the city, which accounts for ~27% of total corporate electricity use.

- Sustainable procurement – Choosing products based on their social and environmental credential reduces Council's emissions and is also a powerful way to make positive changes in the market.
- Sustainable events – The Council has eliminated single use plastic straws from all council-run events and are working with event organisers to make big waste reductions, save energy while still giving great experiences.
- Waste and recycling at work – The Council is diverting more waste away from landfill for productive uses. A Resource Recovery (Organics, Recycling and Waste) Strategy and Action Plan 2020 – 2028 was adopted by Council in November 2020.
- Solar power on Council buildings – Solar panels are installed on Adelaide Town Hall, Adelaide Aquatic Centre, UPark Topham Mall and UPark Pirie Flinders, in addition to those on the Adelaide Central Market, Adelaide Central Bus Station, London Road Depot and UPark Rundle. These solar panels generated more than 1,300MWh of electricity in FY21 and about 78% of electricity generated was used for Council's own daily operations.
- 100% renewable electricity – Entered into a 100% renewable energy contract for all Council's operations that came into effect 1<sup>st</sup> July 2020 which reduces the Council's operational emissions by approximately 50%. The electricity in the contract is delivered by Clements Gap Wind Farm in mid north of South Australia and two new solar farms on the Eyre Peninsular (Streaky Bay) and south-east of South Australia at Coonalpyn built by FlowPower.
- Zero emissions transport – The Council is investing in electric fleet vehicles which are charged with 100% renewable electricity. Our current fleet included 31 electric vehicles that consist of golf carts and sweepers/scrubbers, 12 hybrid and 1 plug-in hybrid vehicles.
- Carbon neutral certification – City of Adelaide has been certified as carbon neutral under Climate Active Carbon Neutral Standard for Organisations since FY2019/20 and is committed to an on-going certification.

## 5. EMISSIONS SUMMARY

### Emissions over time

Emissions since base year		Total tCO <sub>2</sub> -e
Base year:	2018-19	27,657
Year 1:	2019-20	24,609
Year 2:	2020-21	11,765

### Significant changes in emissions

Emission source name	Current year (tCO <sub>2</sub> -e and/ or activity data)	Previous year (tCO <sub>2</sub> -e and/ or activity data)	Detailed reason for change
Computer and technical services	1,031.05 tCO <sub>2</sub> -e // \$ 6,228,615.81	943.76 tCO <sub>2</sub> -e // \$ 5,701,290.17	Increase in activity data
Natural Gas SA (metro)	2,717.34 tCO <sub>2</sub> -e // 43,666.05 GJ	2,349.57 tCO <sub>2</sub> -e // 37,939.12 GJ	Increase in activity data and change in emission factor
Commercial and industrial waste	1,819.12 tCO <sub>2</sub> -e // 1,399.33 tonnes	3,244.33 tCO <sub>2</sub> -e // 2,703.60 tonnes	Decrease in activity data – more waste is diverted from landfill

### Use of Climate Active carbon neutral products and services

- Planet Ark Carbon Neutral 100% Recycled Copy Paper A4 80gsm White Carton 5 Reams
- Reflex Carbon Neutral 100% Recycled Copy Paper A3 80gsm White Ream 500
- Reflex Carbon Neutral 100% Recycled Copy Paper A4 80gsm White Carton 5 Reams
- Reflex Coloured Copy Paper A3 80gsm Sand Ream 500
- Reflex Coloured Copy Paper A4 80gsm Sand Ream 500
- Reflex Coloured Copy Paper A4 80gsm Yellow Ream 500
- Reflex Ultra White Carbon Neutral Copy Paper A4 80gsm White Carton 5 Reams
- Winc Carbon Neutral 100% Recycled Copy Paper A4 80gsm White Carton 5 Reams
- Winc Carbon Neutral 20% Recycled Copy Paper A3 80gsm White Carton 3 Reams
- Winc Carbon Neutral 20% Recycled Copy Paper A4 80gsm White Carton 5 Reams
- Winc Carbon Neutral Copy Paper A3 80gsm White Carton 3 Reams
- Winc Carbon Neutral Copy Paper A4 80gsm White Carton 5 Reams

## Organisation emissions summary

The electricity summary is available in the Appendix B. Electricity emissions were calculated using a market-based approach.

Emission category	Sum of Scope 1 (tCO <sub>2</sub> -e)	Sum of Scope 2 (tCO <sub>2</sub> -e)	Sum of Scope 3 (tCO <sub>2</sub> -e)	Sum of total emissions (tCO <sub>2</sub> -e)
Accommodation and facilities	0	0	0.36	0.36
Air transport (fuel)	0	0	0	0
Air transport (km)	0	0	2.09	2.09
Bespoke	0	0	0	0
Carbon neutral products and services	0	0	0	0
Cleaning and chemicals	0	0	560.92	560.92
Construction materials and services	0	0	632.71	632.71
Electricity	0	225.91	0	225.91
Food	0	0	5.47	5.47
Horticulture and agriculture	0	0	107.74	107.74
ICT services and equipment	0	0	1,683.03	1,683.03
Industrial gas	52.06	0	0	52.06
Land and sea transport (fuel)	1,088.30	0	160.45	1,248.75
Land and sea transport (km)	0	0	873.00	873.00
Machinery and vehicles	0	0	0	0
Office equipment & supplies	0	0	0.20	0.20
Postage, courier and freight	0	0	75.56	75.56
Products	0	0	0	0
Professional services	0	0	0	0
Refrigerants	40.47	0	0	40.47
Roads and landscape	0	0	61.75	61.75
Stationary energy	2,717.34	0	0	2,717.34
Waste	0	0	1,863.74	1,863.74
Water	0	0	1,053.44	1,053.44
Working from home	0	0	0	0
<b>Total</b>	<b>3,898.16</b>	<b>225.91</b>	<b>7,080.50</b>	<b>11,204.57</b>

## Uplift factors

An uplift factor is an upwards adjustment to the total carbon inventory to account for relevant emissions, which can't be reasonably quantified or estimated. This conservative accounting approach helps ensure the integrity of the carbon neutral claim.

Reason for uplift factor	tCO <sub>2</sub> -e
5% to account for non-quantified sources and any uncertainty	560.23
<i>Total footprint to offset (uplift factors + net emissions)</i>	11,765

## 6. CARBON OFFSETS

### Offsets strategy

#### Offset purchasing strategy: In arrears

1. Total offsets previously forward purchased and banked for this report	1,097
2. Total emissions liability to offset for this report	11,765
3. Net offset balance for this reporting period	10,668
4. Total offsets to be forward purchased to offset the next reporting period	0
5. Total offsets required for this report	10,668

### Co-benefits

The City of Adelaide's approach to carbon offsetting is to prioritise South Australian and then Australian offsets that deliver multiple co-benefits to local communities. The City of Adelaide will also purchase international offsets units that have met the offset integrity principles of the Australian Government Climate Active's Organisation Standard when the co-benefits of locally sourced offsets do not outweigh their additional cost.

The City of Adelaide's offsets and co-benefits for FY2020/21 include:

- **Mytrah Wind Power**

This wind energy project in the Indian states of Rajasthan, Andhra Pradesh, Madhya Pradesh and Telangana tackles climate change by providing a renewable source of electricity to the Indian Grid. The project also benefits surrounding villages – providing employment, boosting access to education and to clean water (VCSs Registry).

- **Carbon Conscious Carbon Capture Project 2**

This reforestation project establishes permanent plantings of mallee tree species on land that was previously used for agricultural purposes in Western Australia.

- **Southern Cardamom REDD+ Project**

This project uses the reducing emissions from deforestation and forest degradation (REDD+) method to protect a mosaic of habitats from dense evergreen and pine forests to wetlands, flooded grasslands,



lakes and coastal mangroves. As well as covering parts of the Southern Cardamom National Park and Tatai Wildlife Sanctuary the project also protects a critical part of the Cardamom Mountains Rainforest Ecoregion – one of the most important locations for biodiversity conservation on the planet. This unique project is home to at least 52 IUCN threatened species of mammals, birds and reptiles: Siamese crocodiles, sun bears, clouded leopards and one of Cambodia's two populations of Asian elephants (VCS + CCBS Registry).

- **Inner Mongolia Shangdu Changshengliang Wind Farm Project**

The objective of Inner Mongolia Shangdu Changshengliang Wind Farm Project is to utilise wind resources for electricity generation. The project involves the installation of 33 wind turbines with unit capacity of 1,500 kW and totals up an installation capacity of 49.5MW. The electricity supplied by the project is sold to North China Power Grid. The project helps reduce GHG emissions generated from the high-growth, coal-dominated power generation.

## Offsets summary

### Proof of cancellation of offset units

Offsets cancelled for Climate Active Carbon Neutral Certification										
Project description	Type of offset units	Registry	Date retired	Serial number (and hyperlink to registry transaction record)	Vintage	Eligible quantity (tCO <sub>2</sub> -e)	Quantity used for previous reporting periods	Quantity banked for future reporting periods	Quantity used for this reporting period claim	Percentage of total (%)
Renewable Power Project by Animala Wind Power Private Limited, India	VCU	Verra	19/10/2020	<a href="#">8469-22898530-22921129-VCS-VCU-997-VER-IN-1-1787-01012019-03102019-0</a>	01/01/2019 – 03/10/2019	22,600	21,503	0	1,097	9.3%
Renewable Power Project by Animala Wind Power Private Limited, India	VCU	Verra	18/10/2021	<a href="#">8469-22926736-22927029-VCS-VCU-997-VER-IN-1-1787-01012019-03102019-0</a>	01/01/2019 – 03/10/2019	294	0	0	294	2.5%
Carbon Conscious Carbon Capture Project 2, Australia (EOP100638)	ACCU	ANREU	23/07/2021	<a href="#">3,753,727,362 – 3,753,727,861</a>	2016-2017	500	0	0	500	4.3%
Southern Cardamom REDD+ Project, Cambodia	VCU	Verra	18/10/2021	<a href="#">6829-348929113-348930112-VCU-006-MER-KH-14-1748-01012015-31122015-1</a>	01/01/2015 – 31/12/2015	1,000	0	0	1,000	8.5%
Inner Mongolia	CER	UNFCCC	19/10/ 2021	<a href="#">1068309497 -</a>	2013-2020	12,000	0	3,126	8,874	75.4%

Shangdu Changshengliang Wind Farm Project			<a href="#">1068321496</a>						
<b>Total offsets retired this report and used in this report</b>								11,765	
<b>Total offsets retired this report and banked for future reports</b>							3,126		
<b>Type of offset units</b>	<b>Quantity (used for this reporting period claim)</b>		<b>Percentage of total</b>						
Australian Carbon Credit Units (ACCU)	500		4.3%						
Certified Emissions Reductions (CERs)	8,874		75.4%						
Verified Carbon Units (VCUs)	2,391		20.3%						

## 7. RENEWABLE ENERGY CERTIFICATE (REC) SUMMARY

### Renewable Energy Certificate (REC) summary

The following RECs have been surrendered to reduce electricity emissions under the market-based reporting method.

<b>1. Large-scale Generation certificates (LGCs)*</b>	17,275
<b>2. Other RECs</b>	0

\* LGCs in this table only include those surrendered voluntarily (including through PPA arrangements), and does not include those surrendered in relation to the LRET, GreenPower, and jurisdictional renewables.

Project supported by LGC purchase	Eligible units	Registry	Surrender date	Accreditation code (LGCs)	Certificate serial number	Generation year	Quantity (MWh)	Fuel source	Location
Solar Farm	LGC	REC Registry	15 Sep 2021	SRPVVCX1	27275-31022	2021	3,748	Solar	VIC, Australia
Wind Farm	LGC	REC Registry	15 Sep 2021	WD00NS18	38193-51719	2021	13,527	Wind	NSW, Australia
<i>Total LGCs surrendered this report and used in this report</i>							17,275		

## APPENDIX A: ADDITIONAL INFORMATION

Additional offsets cancelled for purposes other than Climate Active Carbon Neutral Certification							
Project description	Type of offset units	Registry	Date retired	Serial number (and hyperlink to registry transaction record)	Vintage	Eligible Quantity (tCO <sub>2</sub> -e)	Purpose of cancellation
<b>CDQ Project – Waste Heat Capture – China</b>	VER	GSF Registry	30 August 2021	<a href="#">GS1-1-CN-GS2460-15-2015-5620-101754-104541</a>	2015	2,788	Retired on behalf of Cleanaway towards South Australian local government waste collection emissions for FY21 – City of Adelaide's portion in the offset is 152.80 tCO <sub>2</sub> -e.

## APPENDIX B: ELECTRICITY SUMMARY

Electricity emissions are calculated using a market-based approach.

### Market-based method

The market-based method provides a picture of a business's electricity emissions in the context of its renewable energy investments. It reflects the emissions intensity of different electricity products, markets and investments. It uses a residual mix factor (RMF) to allow for unique claims on the zero emissions attribute of renewables without double-counting.

### Market-based approach summary

Market-based approach	Activity data (kWh)	Emissions (kgCO <sub>2</sub> -e)	Renewable % of total
Behind the meter consumption of electricity generated	1,205,877	0	5%
<b>Total non-grid electricity</b>	<b>1,205,877</b>	<b>0</b>	<b>5%</b>
LGC purchased and retired (kWh) (including PPAs & Precinct LGCs)	17,275,000	0	75%
GreenPower	0	0	0%
Jurisdictional renewables (LGCs retired)	0	0	0%
Jurisdictional renewables (LRET) (applied to ACT grid electricity)	0	0	0%
Large Scale Renewable Energy Target (applied to grid electricity only)	4,131,410	0	18%
Residual electricity	424,025	455,013	0%
<b>Total grid electricity</b>	<b>21,830,435</b>	<b>455,013</b>	<b>93%</b>
<b>Total electricity consumed (grid + non grid)</b>	<b>23,036,312</b>	<b>455,013</b>	<b>98%</b>
Electricity renewables	22,612,287	0	
Residual electricity	424,025	455,013	
<b>Exported on-site generated electricity</b>	<b>293,727</b>	<b>-229,107</b>	
Emission footprint (kgCO <sub>2</sub> -e)		225,906	

<b>Total renewables (grid and non-grid)</b>	<b>98.16%</b>
<b>Mandatory</b>	<b>17.93%</b>
<b>Voluntary</b>	<b>74.99%</b>
<b>Behind the meter</b>	<b>5.23%</b>
<b>Residual electricity emission footprint (tCO<sub>2</sub>-e)</b>	<b>226</b>

Figures may not sum due to rounding. Renewable percentage can be above 100%

### Location-based approach summary

Location-based approach	Activity data (kWh)	Emissions (kgCO <sub>2</sub> -e)
ACT	0	0
NSW	0	0
SA	21,830,435	11,351,826
Vic	0	0
Qld	0	0
NT	0	0

WA	0	0
Tas	0	0
<b>Grid electricity (scope 2 and 3)</b>	<b>21,830,435</b>	<b>11,351,826</b>
ACT	0	0
NSW	0	0
SA	1,205,877	0
Vic	0	0
Qld	0	0
NT	0	0
WA	0	0
Tas	0	0
<b>Non-grid electricity (behind the meter)</b>	<b>1,205,877</b>	<b>0</b>
<b>Total electricity consumed</b>	<b>23,036,312</b>	<b>11,351,826</b>
<b>Emission footprint (tCO<sub>2</sub>-e)</b>	<b>11,352</b>	

### Climate Active carbon neutral electricity summary

Carbon neutral electricity offset by Climate Active product	Activity data (kWh)	Emissions (kgCO <sub>2</sub> -e)
N/A	0	0

Climate Active carbon neutral electricity is not considered renewable electricity. The emissions have been offset by another Climate Active carbon neutral product certification.

## APPENDIX C: INSIDE EMISSIONS BOUNDARY

### Non-quantified emission sources

The following sources emissions have been assessed as relevant, are captured within the emissions boundary, but are not measured (quantified) in the carbon inventory. These emissions are accounted for through an uplift factor. They have been non-quantified due to one of the following reasons:

1. **Immaterial** <1% for individual items and no more than 5% collectively
2. **Cost effective** Quantification is not cost effective relative to the size of the emission but uplift applied.
3. **Data unavailable** Data is unavailable but uplift applied. A data management plan must be put in place to provide data within 5 years.
4. **Maintenance** Initial emissions non-quantified but repairs and replacements quantified.

Relevant-non-quantified emission sources	(1) Immaterial	(2) Cost effective (but uplift applied)	(3) Data unavailable (but uplift applied & data plan in place)	(4) Maintenance
Events generation (New Year Eve event)	Yes	No	No	No
Legal and conveyancing services	Yes	No	No	No
Electricity consumption from	Yes	No	No	No

upstream leased assets which electricity bills are paid by the property owners				
Other purchased goods and services not captured in any other scopes	No	Yes (uplift applied)	No	No

## APPENDIX D: OUTSIDE EMISSIONS BOUNDARY

### Excluded emission sources

The below emission sources have been assessed as not relevant to an organisation's or precinct's operations and are outside of its emissions boundary. These emissions are not part of the carbon neutral claim. Emission sources considered for relevance must be included within the certification boundary if they meet two of the five relevance criteria. Those which only meet one condition of the relevance test can be excluded from the certification boundary.

Emissions tested for relevance are detailed below against each of the following criteria:

1. **Size** The emissions from a particular source are likely to be large relative to the organisation's electricity, stationary energy and fuel emissions
2. **Influence** The responsible entity has the potential to influence the reduction of emissions from a particular source.
3. **Risk** The emissions from a particular source contribute to the organisation's greenhouse gas risk exposure.
4. **Stakeholders** Key stakeholders deem the emissions from a particular source are relevant.
5. **Outsourcing** The emissions are from outsourced activities previously undertaken within the organisation's boundary, or from outsourced activities typically undertaken within the boundary for comparable organisations.

Emission sources in the table below have been excluded as they have been assessed as not relevant according to the relevance test.

Emission sources tested for relevance	(1) Size	(2) Influence	(3) Risk	(4) Stakeholders	(5) Outsourcing	Included in boundary?
Office equipment	No	No	No	No	No	No
Office furniture	No	No	No	No	No	No
Printers and multifunction devices	No	No	No	No	No	No
General staff amenities	No	No	No	No	No	No



Stationery (Excluding paper and office equipment)	No	No	No	No	No	No
Pest control	No	No	No	No	No	No
Short-term and long-term storage (exclude document storage)	No	No	No	No	No	No
Waste generated by residents and businesses	No	No	No	No	No	No
Landfill that accepts waste from Council	No	No	No	No	No	No
Downstream leased assets that lease Council's properties and pay utility retailers directly	No	No	No	No	No	No



An Australian Government Initiative

