



PUBLIC DISCLOSURE STATEMENT


NATION PARTNERS PTY LTD

**ORGANISATION
FY2021-2022**

Australian Government
Climate Active
Public Disclosure Statement

nation
partners



NAME OF CERTIFIED ENTITY	Nation Partners Pty Ltd
REPORTING PERIOD	1 July 2022 – 30 June 2022 Arrears report
DECLARATION	<p><i>To the best of my knowledge, the information provided in this public disclosure statement is true and correct and meets the requirements of the Climate Active Carbon Neutral Standard.</i></p>  <p>Matthew Nation Managing Director/Sole Company Secretary 25/05/2023</p>



Australian Government
Department of Industry, Science,
Energy and Resources

Public Disclosure Statement documents are prepared by the submitting organisation. The material in the Public Disclosure Statement documents represents the views of the organisation and do not necessarily reflect the views of the Commonwealth. The Commonwealth does not guarantee the accuracy of the contents of the Public Disclosure Statement document and disclaims liability for any loss arising from the use of the document for any purpose.

Version March 2022. To be used for FY20/21/CY2021 reporting onwards.

1.CERTIFICATION SUMMARY

TOTAL EMISSIONS OFFSET	80 tCO ₂ -e
OFFSETS BOUGHT	100% ACCUs
RENEWABLE ELECTRICITY	76%
TECHNICAL ASSESSMENT	17/08/2023 Pangolin Associates Next technical assessment due: 2026
THIRD PARTY VALIDATION	Type 1/2/3 Date: 13 th April 2023 Name: Wali Aziz Organisation: Walker Wayland NSW

Contents

1. Certification summary	3
2. Carbon neutral information.....	4
3. Emissions Boundary	5
4. Emissions reductions.....	7
5. Emissions summary	9
6. Carbon offsets	11
7. Renewable Energy Certificate (REC) Summary.....	13
Appendix A: Additional Information.....	14
Appendix B: Electricity summary.....	15
Appendix C: Inside emissions boundary.....	17
Appendix D: Outside emissions boundary.....	17

2. CARBON NEUTRAL INFORMATION

Description of certification

This inventory has been prepared for the financial year from 1 July 2021 to 30 June 2022 and covers the Australian operations of Nation Partners Pty Ltd.

The operational boundary has been defined based on an operational control test, in accordance with the principles of the National Greenhouse and Energy Reporting Act 2007. This includes the following locations and facilities:

- Level 3, 75-77 Flinders Lane, Melbourne VIC 3000
- Suite 306, 50 Holt Street, Sydney NSW 2010
- Level 2/7 Neptune Street, Phillip ACT 2006

Organisation description

Nation Partners Pty Ltd (Nation Partners) (ABN: 96 166 861 892) was founded in 2013 with the intent of creating a purpose-driven business with a strong environmental and social conscience. We have three offices across Australia and over 50 full-time equivalent staff. Our office locations are detailed below:

- **Melbourne** - Level 3, 75-77 Flinders Lane, Melbourne, VIC, 3000
- **Sydney** - Suite 306, 50 Holt street Sydney, NSW, 2010
- **Canberra** - Level 2/7 Neptune Street, Phillip, ACT, 2006

Nation Partners provides an array of consultancy services encompassing contaminated land advisory, sustainable development, climate change adaptation and resilience, greenhouse gas mitigation, environmental protection, planning and approvals, investment, and business case advisory, as well as stakeholder relations and communications.

Nation Partners is a certified B Corporation and we are committed to directing 4% of all profits to social investment initiatives. We are also an employee-owned business with distributed leadership (see *Figure 1* for organizational structure overview) meaning we all have the ability to control our destiny and ensure our collective energy (and profits) are directed towards solving some of the planet's most pressing issues.

As a certified B Corporation, Nation Partners exists to work with like-minded clients to influence a better and more sustainable future for society and the planet. We are a profit with purpose business and direct 4% of our profits to the Nation Partners Giving Fund, where we support local communities to tackle the impacts of climate change. Climate Active enables us to further the reach of our impact by providing a robust framework to support our commitment to climate action.

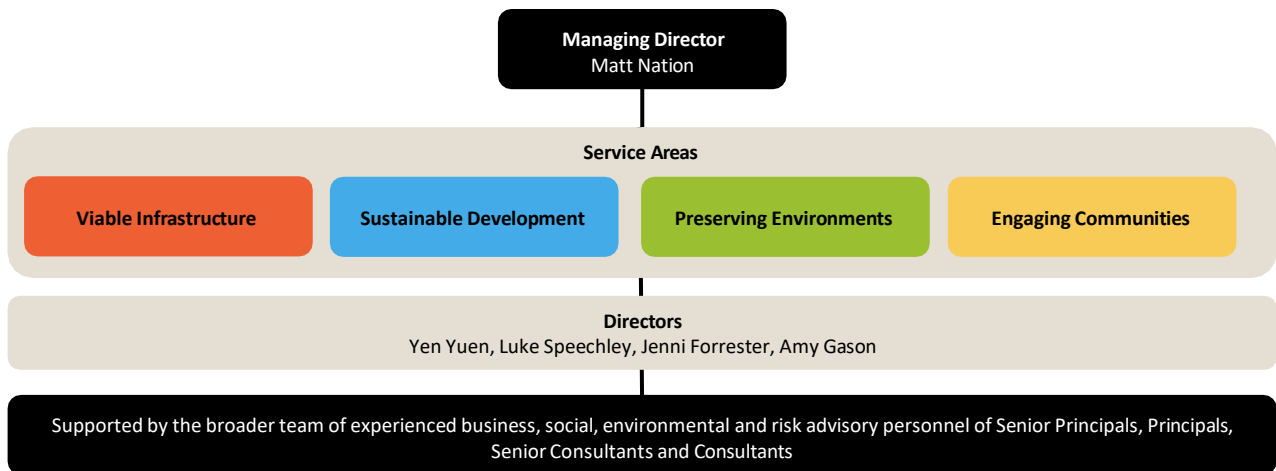


Figure 1. Nation Partners Organisational Structure

3. EMISSIONS BOUNDARY

Inside the emissions boundary

All emission sources listed in the emissions boundary are part of the carbon neutral claim.

Quantified emissions have been assessed as relevant and are quantified in the carbon inventory. This may include emissions that are not identified as arising due to the operations of the certified entity, however are **optionally included**.

Non-quantified emissions have been assessed as relevant and are captured within the emissions boundary, but are not measured (quantified) in the carbon inventory. All material emissions are accounted for through an uplift factor. Further detail is available at Appendix C.

Outside the emissions boundary

Excluded emissions are those that have been assessed as not relevant to an organisation's or precinct's operations and are outside of its emissions boundary or are outside of the scope of the certification. These emissions are not part of the carbon neutral claim. Further detail is available at Appendix D.

Inside emissions boundary		Outside emission boundary
<u>Quantified</u>	<u>Non-quantified</u>	<u>Excluded</u>
Accommodation and facilities	N/A	N/A
General products and merchandise		
Cleaning and Chemicals		
Climate Active Carbon Neutral Products and Services		
Electricity		
Food		
ICT services and equipment		
Office equipment & supplies		
Postage, courier and freight		
Professional Services		
Refrigerants		
Transport (Air)		
Transport (Land and Sea)		
Waste		
Water		
Working from home		
	<u>Optionally included</u>	
	N/A	

Data management plan for non-quantified sources

There are no non-quantified sources in the emission boundary that require a data management plan.

4. EMISSIONS REDUCTIONS

Emissions reduction strategy

Nation Partners is committed to eliminating all Scope 1 and 2 emissions by 2025 and reducing Scope 3 emissions by 50% by 2030, on a baseline year of Financial Year (FY) 2022.

Approximately 88% of Nation Partners' emissions profile is generated from Scope 3 emissions. As such, our Emission Reduction Strategy is predominately focused on reducing these indirect (upstream and downstream) emissions in our value chain.

Emissions Reduction Strategy	Emissions Source	Timeframe / deadline for reduction	KPIs & Measurement Approach
Goal 1: Eliminate Scope 1 and 2 emissions by 2025			
Action 1.1 Eliminate transport emissions (land) by prioritising low-carbon and carbon-neutral modes of transport – cycling, walking, public transport, electric vehicles, where feasible.	Scope 1	Q3, FY2024	Measure reduction in emissions following implementation of mandate compared to previous / BAU business travel.
Action 1.2 Eliminate tenancy electricity emissions through lobbying buildings to convert to GreenPower for communal areas.	Scope 2	Q3, FY2024	Measure reduction in emissions after sourcing carbon neutral electricity.
Action 1.3 Eliminate refrigerant emissions through regular preventative maintenance	Scope 1	Q4, FY2024	Measure reduction in emissions from period prior to regular maintenance compared to after regular maintenance.
Goal 2: Reduce Scope 3 emissions by 50% by 2030			
Action 2.2 Eliminate transport emissions (air) by mandating that emissions offsets are purchased for each flight at the point of transaction	Scope 3	FY2024	Measure reduction in emissions following implementation of mandate compared to previous / BAU business travel.
Action 2.1 Encourage staff to purchase Greenpower and carbon	Scope 3	FY2024	Monitor staff uptake of GreenPower and track

<i>neutral gas (where applicable) for their homes to reduce emissions associated with staff working from home.</i>			emissions savings.
Action 2.3 <i>Update procurement / supplier policy to preference carbon neutral suppliers</i>	Scope 3	FY2024	Compare reduction figures from before and after this action is implemented.
Action 2.4 <i>Encourage professional service providers (e.g. IT service, legal, and accounting) to become Climate Active carbon neutral certified for the services they provide.</i>	Scope 3	FY2026	Survey suppliers to track number of services provided that become carbon neutral
Action 2.5 <i>Implement sustainable travel policy that preferences carbon neutral accommodation and use of electric vehicles (where feasible) for travel purposes.</i>	Scope 3	Currently underway (FY2023)	Monitor trips taken and corresponding emissions compared with previous / BAU business travel.

5.EMISSIONS SUMMARY

Use of Climate Active carbon neutral products and services

Nation Partners procures carbon-neutral business flights through Qantas and Virgin, carbon-neutral electricity supplied by Powershop, and accounting software from Xero. This assessment and Climate Active submission was prepared with the assistance of Pangolin Associates and these services are also carbon neutral.

Emissions summary

The electricity summary is available in the Appendix B. Electricity emissions were calculated using a market-based approach.

Emission category	Sum of scope 1 (tCO ₂ -e)	Sum of scope 2 (tCO ₂ -e)	Sum of scope 3 (tCO ₂ -e)	Sum of total emissions (t CO ₂ -e)
Accommodation and facilities	0.00	0.00	2.84	2.84
Bespoke	0.00	0.00	0.10	0.10
Cleaning and Chemicals	0.00	0.00	0.50	0.50
Climate Active Carbon Neutral Products and Services	0.00	0.00	0.00	0.00
Electricity	0.00	4.37	0.00	4.37
Food	0.00	0.00	2.54	2.54
ICT services and equipment	0.00	0.00	27.65	27.65
Office equipment & supplies	0.00	0.00	1.67	1.67
Postage, courier and freight	0.00	0.00	0.04	0.04
Professional Services	0.00	0.00	8.51	8.51
Refrigerants	2.84	0.00	0.00	2.84
Transport (Air)	0.00	0.00	0.15	0.15
Transport (Land and Sea)	2.03	0.00	9.66	11.70
Waste	0.00	0.00	0.08	0.08
Water	0.00	0.00	0.55	0.55
Working from home	0.00	0.00	16.03	16.03
Grand Total	4.872531503	4.36687661	70.33	79.56814678

Uplift factors

An uplift factor is an upwards adjustment to the total carbon inventory to account for relevant emissions, which can't be reasonably quantified or estimated. This conservative accounting approach helps ensure the integrity of the carbon neutral claim.

Reason for uplift factor	tCO ₂ -e
N/A	
Total footprint to offset <i>(total net emissions from summary table + total uplifts)</i>	79.57

6.CARBON OFFSETS

Offsets retirement approach

In arrears		
1.	Total emissions footprint to offset for this report	79.57 tCO ₂ -e
2.	Total eligible offsets purchased and retired for this report	80 tCO ₂ -e
3.	Total eligible offsets banked to use toward next year's report	4 tCO ₂ -e

Co-benefits

The Wulbujubur Cultural Fire Project is an Aboriginal-led savanna burning project that reduces emissions associated with fire. Savannah fires release methane and nitrous oxide into the air. By burning in the early dry season when fires occur under cooler, moister conditions, the amount of greenhouse gases released are reduced by limiting the extent and frequency of fires later in the season.

Nation Partners chose to purchase these community credits as they have multiple environmental, social and cultural benefits including:

- Supporting elders to share traditional ecological knowledge with young people;
- Protect rock art and sacred sites;
- Protect the environment by Indigenous-led land management;
- Support meaningful employment that aligns with the interests and values of traditional owners; and
- Contribute to the increase pride and self-esteem of Indigenous people.

Eligible offsets retirement summary

Offsets cancelled for Climate Active Carbon Neutral Certification											
Project description	Type of offset units	Registry	Date retired	Serial number (and hyperlink to registry transaction record)	Vintage	Stapled quantity	Eligible quantity (tCO ₂ -e)	Eligible quantity used for previous reporting periods	Eligible quantity banked for future reporting periods	Eligible quantity used for this reporting period	Percentage of total (%)
Wulbujubur Cultural Fire Project	ACCUs	ANREU	8 th May 2023	8, 357, 016, 336 – 8, 357, 016,419	2022-23		84	0	4	80	100
Total offsets retired this report and used in this report										80	
Total offsets retired this report and banked for future reports									4		
Type of offset units				Quantity (used for this reporting period claim)				Percentage of total			
Australian Carbon Credit Units (ACCUs)				84				100%			

7. RENEWABLE ENERGY CERTIFICATE (REC) SUMMARY

Renewable Energy Certificate (REC) summary

N/A

APPENDIX A: ADDITIONAL INFORMATION

N/A

APPENDIX B: ELECTRICITY SUMMARY

Electricity emissions are calculated using a market-based approach

Market-based method:

The market-based method provides a picture of a business's electricity emissions in the context of its renewable energy investments. It reflects the emissions intensity of different electricity products, markets and investments. It uses a residual mix factor (RMF) to allow for unique claims on the zero emissions attribute of renewables without double-counting.

Location-based method:

The location-based method provides a picture of a business's electricity emissions in the context of its location, and the emissions intensity of the electricity grid it relies on. It reflects the average emissions intensity of the electricity grid in the location (State) in which energy consumption occurs. The location-based method does not allow for any claims of renewable electricity from grid-imported electricity usage.

Market Based Approach Summary

Market Based Approach	Activity Data (kWh)	Emissions (kgCO ₂ e)	Renewable Percentage of total
Behind the meter consumption of electricity generated	0	0	0%
Total non-grid electricity	0	0	0%
LGC Purchased and retired (kWh) (including PPAs & Precinct LGCs)	0	0	0%
GreenPower	8,010	0	45%
Jurisdictional renewables (LGCs retired)	2,246	0	12%
Jurisdictional renewables (LRET) (applied to ACT grid electricity)	513	0	3%
Large Scale Renewable Energy Target (applied to grid electricity only)	2,831	0	16%
Residual Electricity	4,389	4,367	0%
Total grid electricity	17,989	4,367	76%
Total Electricity Consumed (grid + non grid)	17,989	4,367	76%
Electricity renewables	13,600	0	
Residual Electricity	4,389	4,367	
Exported on-site generated electricity	0	0	
Emissions (kgCO ₂ e)		4,367	

Total renewables (grid and non-grid)

Total renewables (grid and non-grid)	75.60%
Mandatory	31.08%
Voluntary	44.53%
Behind the meter	0.00%
Residual Electricity Emission Footprint (TCO₂e)	4

Figures may not sum due to rounding. Renewable percentage can be above 100%

Location Based Approach Summary

Location Based Approach	Activity Data (kWh)	Scope 2 Emissions (kgCO2e)	Scope 3 Emissions (kgCO2e)
ACT	2,759	2,152	193
NSW	3,635	2,835	254
SA	0	0	0
Vic	11,595	10,551	1,159
Qld	0	0	0
NT	0	0	0
WA	0	0	0
Tas	0	0	0
Grid electricity (scope 2 and 3)	17,989	15,539	1,607
ACT	0	0	0
NSW	0	0	0
SA	0	0	0
Vic	0	0	0
Qld	0	0	0
NT	0	0	0
WA	0	0	0
Tas	0	0	0
Non-grid electricity (Behind the meter)	0	0	0
Total Electricity Consumed	17,989	15,539	1,607
Emission Footprint (TCO2e)	17		
<i>Scope 2 Emissions (TCO2e)</i>	16		
<i>Scope 3 Emissions (TCO2e)</i>	2		
Carbon Neutral electricity offset by Climate Active Product	Activity Data (kWh)	Emissions (kgCO2e)	
<i>Powershop</i>	4,412	0	
<i>Climate Active carbon neutral electricity is not renewable electricity. The emissions have been offset by another Climate Active member through their Product certification.</i>			

APPENDIX C: INSIDE EMISSIONS BOUNDARY

Non-quantified emission sources

The following sources emissions have been assessed as relevant, are captured within the emissions boundary, but are not measured (quantified) in the carbon inventory. These emissions are accounted for through an uplift factor. They have been non-quantified due to one of the following reasons:

1. **Immaterial** <1% for individual items and no more than 5% collectively
2. **Cost effective** Quantification is not cost effective relative to the size of the emission but uplift applied.
3. **Data unavailable** Data is unavailable but uplift applied. A data management plan must be put in place to provide data within 5 years.
4. **Maintenance** Initial emissions non-quantified but repairs and replacements quantified.

N/A

APPENDIX D: OUTSIDE EMISSIONS BOUNDARY

Excluded emission sources

The below emission sources have been assessed as not relevant to an organisation's or precinct's operations and are outside of its emissions boundary. These emissions are not part of the carbon neutral claim. Emission sources considered for relevance must be included within the certification boundary if they meet two of the five relevance criteria. Those which only meet one condition of the relevance test can be excluded from the certification boundary.

Emissions tested for relevance are detailed below against each of the following criteria:

1. **Size** The emissions from a particular source are likely to be large relative to the organisation's electricity, stationary energy and fuel emissions
2. **Influence** The responsible entity has the potential to influence the reduction of emissions from a particular source.
3. **Risk** The emissions from a particular source contribute to the organisation's greenhouse gas risk exposure.
4. **Stakeholders** Key stakeholders deem the emissions from a particular source are relevant.
5. **Outsourcing** The emissions are from outsourced activities previously undertaken within the organisation's boundary, or from outsourced activities typically undertaken within the boundary for comparable organisations.

Emission sources tested for relevance	(1) Size	(2) Influence	(3) Risk	(4) Stakeholders	(5) Outsourcing	Included in boundary?
N/A	N/A	N/A	N/A	N/A	N/A	N/A



An Australian Government Initiative



Nation Partners FY2022 Organisation PDS Final

Final Audit Report

2023-05-25

Created:	2023-05-25
By:	Joanne Danton (jdanton@nationpartners.com.au)
Status:	Signed
Transaction ID:	CBJCHBCAABAATgbDlpwMyYJMmTmeqj-S6BCVxudGgPH3

"Nation Partners FY2022 Organisation PDS Final" History



Document created by Joanne Danton (jdanton@nationpartners.com.au)

2023-05-25 - 0:44:40 AM GMT



Document emailed to Matthew Nation (mnation@nationpartners.com.au) for signature

2023-05-25 - 0:45:00 AM GMT



Email viewed by Matthew Nation (mnation@nationpartners.com.au)

2023-05-25 - 1:01:10 AM GMT



Document e-signed by Matthew Nation (mnation@nationpartners.com.au)

Signature Date: 2023-05-25 - 1:01:23 AM GMT - Time Source: server



Agreement completed.

2023-05-25 - 1:01:23 AM GMT



Adobe Acrobat Sign