



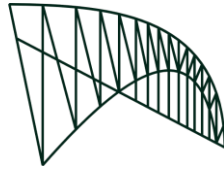
PUBLIC DISCLOSURE STATEMENT

FELIZ PUENTE PTY LTD

**ORGANISATION CERTIFICATION
CY2022**


Australian Government
Climate Active
Public Disclosure Statement

**BRIDGECLIMB
SYDNEY**



An Australian Government Initiative



NAME OF CERTIFIED ENTITY	Feliz Puento Pty Ltd
REPORTING PERIOD	1 January 2022 – 31 December 2022 Arrears report
DECLARATION	<p><i>To the best of my knowledge, the information provided in this public disclosure statement is true and correct and meets the requirements of the Climate Active Carbon Neutral Standard.</i></p>  <p>Deborah Zimmer CEO 5 December 2023</p>



Australian Government
**Department of Climate Change, Energy,
the Environment and Water**

Public Disclosure Statement documents are prepared by the submitting organisation. The material in the Public Disclosure Statement document represents the views of the organisation and do not necessarily reflect the views of the Commonwealth. The Commonwealth does not guarantee the accuracy of the contents of the Public Disclosure Statement document and disclaims liability for any loss arising from the use of the document for any purpose.

Version March 2023.

1. CERTIFICATION SUMMARY

TOTAL EMISSIONS OFFSET	248 t CO ₂ -e
OFFSETS USED	100% VCUs
RENEWABLE ELECTRICITY	0%
CARBON ACCOUNT	Prepared by: 100% Renewables Pty Ltd
TECHNICAL ASSESSMENT	29 November 2023 100% Renewables Pty Ltd Next technical assessment due: CY 2025
THIRD PARTY VALIDATION	Type 1 13 October 2023 KREA Consulting Pty Ltd

Contents

1. Certification summary	3
2. Carbon neutral information	4
3. Emissions boundary	5
4. Emissions reductions	7
5. Emissions summary	8
6. Carbon offsets	9
7. Renewable Energy Certificate (REC) Summary	11
Appendix A: Additional Information	12
Appendix B: Electricity summary	13
Appendix C: Inside emissions boundary	16
Appendix D: Outside emissions boundary	17

2. CARBON NEUTRAL INFORMATION

Description of certification

The emission inventory in this Public Disclosure Statement for the calendar year 2022 with the same year as the baseline year has been developed in accordance with the Climate Active Carbon Neutral Standard for Organisations. Greenhouse gas (GHG) emissions within BridgeClimb Sydney's operational control relevant to the organisation have been captured in this certification.

Organisation description

Feliz Puente Pty Ltd (ABN: 79 625 999 877) trading as BridgeClimb Sydney, is an iconic Australian experience that takes guests on a journey to the top of one of the nation's most famous and celebrated structure – the Sydney Harbour Bridge. Since 1998, we have welcomed more than 4 million climbers, from 140 different countries around the world, to scale the arches of Australia's most famous landmark. As guests ascend to the summit of the world's largest steel arch, they experience spectacular 360-degree views, and fascinating facts and stories from our expert Climb Leaders.

We recognise that the beauty of the city we showcase, the Gadigal lands of Sydney, is directly tied to the health of the environment. We are committed to contributing positively to the environmental and sustainability challenges that our planet faces. By nurturing and protecting the planet, we can offer meaningful and enriching experiences to travellers today while ensuring this also endures for generations to come.

3.EMISSIONS BOUNDARY

Inside the emissions boundary

All emission sources listed in the emissions boundary are part of the carbon neutral claim.

Quantified emissions have been assessed as relevant and are quantified in the carbon inventory. This may include emissions that are not identified as arising due to the operations of the certified entity, however, are **optionally included**.

Non-quantified emissions have been assessed as relevant and are captured within the emissions boundary but are not measured (quantified) in the carbon inventory. All material emissions are accounted for through an uplift factor. Further detail is available at Appendix C.

Outside the emissions boundary

Excluded emissions are those that have been assessed as not relevant to an organisation's operations and are outside of its emissions boundary or are outside of the scope of the certification. These emissions are not part of the carbon neutral claim. Further detail is available at Appendix D.

Inside emissions boundary

Quantified

Electricity (admin arch)
Accounting services
Banking services
Business services
Insurance
Legal services
Security and personal safety
Subscriptions & periodicals
Stationery
Postage and courier
Road freight
Employee commute
Working from home
Water (admin arch)
Air travel (staff)
Business accommodation (staff)
Food and catering (staff)
Waste-to-landfill

Non-quantified

Refrigerants
Green waste

Outside emission boundary

Excluded

Capital expenditures (air con, climbing equipment & apparel, IT & plant equipment)

4. EMISSIONS REDUCTIONS

Emissions reduction strategy

BridgeClimb Sydney has a comprehensive Environmental Management Plan which includes targets to reduce our overall environmental impact and ensure our sustainability efforts are the best they can, which incorporates emissions reduction targets.

Included in the BridgeClimb's 2023-24 Strategy are targets to:

- Focus on maximising waste minimisation across our sites
- Move to green energy across our operations
- Upgrade to more energy efficient ways to manage thermal comfort.
- Be carbon neutral through emissions reductions and purchasing offsets

The following actions have specifically been identified for this calendar year:

We aim to reduce our carbon emissions by 10% over 5 years.

Focus	Area	Emissions Reductions Actions	Timeline/Budget
Travel/Transport	Team Member Travel	Track Team Member commuting patterns to establish a baseline (within 3 months) to help inform a reduction target.	Base line – January 2024 Reduction – 10% less single person in car in rest of year compared to baseline
Waste	Audit	Carry out waste audit to understand further areas of improvement	December 2023
	New bins and awareness material	Fully implement the 'Lets sort this!' program with its 13 channels of reuse/recycling to divert waste from landfill.	December 2023
Equipment	Design	Upgrade HVAC equipment/blinds/fans to more energy efficient options and maximise the impacts of the window restoration project to manage thermal comfort and air movement.	As equipment ends its lifespan and as window restoration project completes areas to allow for upgrades Phase 1 by May 2024, Phase 2 by May 2025.
Energy	Electricity	Transition to Green Energy as contracts finish.	All green power by end of September 2024

5. EMISSIONS SUMMARY

Use of Climate Active carbon neutral products, services, buildings or precincts

N/A

Emissions summary

The electricity summary is available in the Appendix B. Electricity emissions were calculated using a market-based approach.

Emission category	Sum of scope 1 (tCO ₂ -e)	Sum of scope 2 (tCO ₂ -e)	Sum of scope 3 (tCO ₂ -e)	Sum of total emissions (t CO ₂ -e)
Accommodation and facilities (staff)	0.00	0.00	0.55	0.55
Electricity (admin arch)	0.00	75.33	9.97	85.30
Food and catering (staff)	0.00	0.00	23.81	23.81
Office equipment & supplies	0.00	0.00	10.26	10.26
Postage, courier and freight	0.00	0.00	2.79	2.79
Professional Services	0.00	0.00	55.57	55.57
Refrigerants	0.00	0.00	0.00	0.00
Transport (Air)	0.00	0.00	14.79	14.79
Transport (Land and Sea)	0.00	0.00	49.11	49.11
Waste	0.00	0.00	0.21	0.21
Water (admin arch)	0.00	0.00	0.30	0.30
Working from home	0.00	0.00	4.83	4.83
Total	0.00	75.33	172.20	247.53

6. CARBON OFFSETS

Offsets retirement approach

This certification has taken in-arrears offsetting approach. The total emission to offset is 248 t CO₂-e. The total number of eligible offsets used in this report is 248 t CO₂-e. Of the total eligible offsets used, 0 t CO₂-e were previously banked and 248 t CO₂-e were newly purchased and retired. 0 t CO₂-e are remaining and have been banked for future use.

Co-benefits

This section provides a brief description of the carbon offsets purchased and retired for Feliz Puente Pty Ltd's carbon neutral claim.

Inner Mongolia Chifeng Gaofeng Wind Power Project

This project relates to 100 per cent of the total amount of offsets purchased and retired for this reporting period. The activity includes the generation of electrical energy using wind and selling the generated electricity to the respective state utilities under the Northeast China Power Grid. A total of 25 sets of 2,000 kW wind turbines (Vestas V80-2000Kw of Denmark) have been installed, providing a total capacity of 50MW. The power produced displaces an equivalent amount of power of the grid which is fed mainly by fossil fired power plants. Hence, it results in reduction of greenhouse gas emissions.

The project meets the following Sustainable Development Goals:



Eligible offsets retirement summary

Offsets retired for Climate Active Carbon Neutral Certification											
Project description	Type of offset units	Registry	Date retired	Serial number (and hyperlink to registry transaction record)	Vintage	Stapled quantity	Eligible quantity retired (tCO ₂ -e)	Eligible quantity used for previous reporting periods	Eligible quantity banked for future reporting periods	Eligible quantity used for this reporting period	Percentage of total (%)
Inner Mongolia Chifeng Gaofeng Wind Power Project	VCU	Verra	29 Nov 2023	14205-562635011-562635258-VCS-VCU-1310-VER-CN-1-813-01012017-31122017-0	2017	0	248	0	0	248	100
Total eligible offsets retired and used for this report										248	
Total eligible offsets retired this report and banked for use in future reports									0		
Type of offset units											
				Verified Carbon Units (VCUs)			248			100%	

7. RENEWABLE ENERGY CERTIFICATE (REC) SUMMARY

Renewable Energy Certificate (REC) summary

The following RECs have been surrendered to reduce electricity emissions under the market-based reporting method.

1. Large-scale Generation certificates (LGCs)*

-

* LGCs in this table only include those surrendered voluntarily (including through PPA arrangements) and does not include those surrendered in relation to the LRET, GreenPower, and jurisdictional renewables.

Project supported by LGC purchase	Project location	Eligible unit type	Registry	Surrender date	Accreditation code	Certificate serial number	Generation year	Fuel source	Quantity (MWh)
Not applicable	-	-	-	-	-	-	-	-	-
Total LGCs surrendered this report and used in this report									Not applicable

APPENDIX A: ADDITIONAL INFORMATION

Attachment 1: Proof of the retirement – Inner Mongolia Chifeng Gaofeng Wind Power Project



<h3>Certificate of Verified Carbon Unit (VCU) Retirement</h3>
<p>Verra, in its capacity as administrator of the Verra Registry, does hereby certify that on 29 Nov 2023, 248 Verified Carbon Units (VCUs) were retired on behalf of:</p>
<p>Feliz Puente Pty Ltd</p>
<p>Project Name Inner Mongolia Chifeng Gaofeng Wind Power Project</p>
<p>VCU Serial Number 14205-562635011-562635258-VCS-VCU-1310-VER-CN-1-813-01012017-31122017-0</p>
<p>Additional Certifications</p>
<p>Powered by  APX</p>

APPENDIX B: ELECTRICITY SUMMARY

There are two international best-practice methods for calculating electricity emissions – the location-based method and the market-based method. Reporting electricity emissions under both methods is called dual reporting.

Dual reporting of electricity emissions is useful, as it provides different perspectives of the emissions associated with a business's electricity usage.

Location-based method:

The location-based method provides a picture of a business's electricity emissions in the context of its location, and the emissions intensity of the electricity grid it relies on. It reflects the average emissions intensity of the electricity grid in the location (State) in which energy consumption occurs. The location-based method does not allow for any claims of renewable electricity from grid-imported electricity usage.

Market-based method:

The market-based method provides a picture of a business's electricity emissions in the context of its renewable energy investments. It reflects the emissions intensity of different electricity products, markets and investments. It uses a residual mix factor (RMF) to allow for unique claims on the zero emissions attribute of renewables without double-counting.

For this certification, electricity emissions have been set by using the **market-based approach**.

Market-based approach summary			
Market-based approach	Activity Data (kWh)	Emissions (kg CO ₂ -e)	Renewable percentage of total
Behind the meter consumption of electricity generated	0	0	0%
Total non-grid electricity	0	0	0%
LGC Purchased and retired (kWh) (including PPAs)	0	0	0%
GreenPower	0	0	0%
Climate Active precinct/building (voluntary renewables)	0	0	0%
Precinct/Building (LRET)	0	0	0%
Precinct/Building jurisdictional renewables (LGCs surrendered)	0	0	0%
Electricity products (voluntary renewables)	0	0	0%
Electricity products (LRET)	0	0	0%
Electricity products jurisdictional renewables (LGCs surrendered)	0	0	0%
Jurisdictional renewables (LGCs surrendered)	0	0	0%
Jurisdictional renewables (LRET) (applied to ACT grid electricity)	0	0	0%
Large Scale Renewable Energy Target (applied to grid electricity only)	20,464	0	19%
Residual Electricity	89,319	85,300	0%
Total renewable electricity (grid + non grid)	20,464	0	19%
Total grid electricity	109,783	85,300	19%
Total electricity (grid + non grid)	109,783	85,300	19%
Percentage of residual electricity consumption under operational control	100%		
Residual electricity consumption under operational control	89,319	85,300	
Scope 2	78,879	75,330	
Scope 3 (includes T&D emissions from consumption under operational control)	10,440	9,970	
Residual electricity consumption not under operational control	0	0	
Scope 3	0	0	

Total renewables (grid and non-grid)	18.64%
Mandatory	18.64%
Voluntary	0.00%
Behind the meter	0.00%
Residual scope 2 emissions (t CO₂-e)	75.33
Residual scope 3 emissions (t CO₂-e)	9.97
Scope 2 emissions liability (adjusted for already offset carbon neutral electricity) (t CO₂-e)	75.33
Scope 3 emissions liability (adjusted for already offset carbon neutral electricity) (t CO₂-e)	9.97
Total emissions liability (t CO₂-e)	85.30

Figures may not sum due to rounding. Renewable percentage can be above 100%

Location-based approach summary						
Location-based approach	Activity Data (kWh) total	Under operational control			Not under operational control	
Percentage of grid electricity consumption under operational control	100%	(kWh)	Scope 2 Emissions (kgCO ₂ -e)	Scope 3 Emissions (kgCO ₂ -e)	(kWh)	Scope 3 Emissions (kgCO ₂ -e)
ACT	0	0	0	0	0	0
NSW	109,783	109,783	80,141	6,587	0	0
SA	0	0	0	0	0	0
VIC	0	0	0	0	0	0
QLD	0	0	0	0	0	0
NT	0	0	0	0	0	0
WA	0	0	0	0	0	0
TAS	0	0	0	0	0	0
Grid electricity (scope 2 and 3)	109,783	109,783	80,141	6,587	0	0
ACT	0	0	0	0		
NSW	0	0	0	0		
SA	0	0	0	0		
VIC	0	0	0	0		
QLD	0	0	0	0		
NT	0	0	0	0		
WA	0	0	0	0		
TAS	0	0	0	0		
Non-grid electricity (behind the meter)	0	0	0	0		
Total electricity (grid + non grid)	0					
Residual scope 2 emissions (t CO₂-e)						80.14
Residual scope 3 emissions (t CO₂-e)						6.59
Scope 2 emissions liability (adjusted for already offset carbon neutral electricity) (t CO₂-e)						80.14
Scope 3 emissions liability (adjusted for already offset carbon neutral electricity) (t CO₂-e)						6.59
Total emissions liability (t CO₂-e)						86.73

Operations in Climate Active buildings and precincts

Operations in Climate Active buildings and precincts	Electricity consumed in Climate Active certified building/precinct (kWh)	Emissions (kg CO ₂ -e)
N/A	0	0
<i>Climate Active carbon neutral electricity is not renewable electricity. These electricity emissions have been offset by another Climate Active member through their building or precinct certification. This electricity consumption is also included in the market based and location based summary tables. Any electricity that has been sourced as renewable electricity by the building/precinct under the market based method is outlined as such in the market based summary table.</i>		

Climate Active carbon neutral electricity products

Climate Active carbon neutral product used	Electricity claimed from Climate Active electricity products (kWh)	Emissions (kg CO ₂ -e)
N/A	0	0
<i>Climate Active carbon neutral electricity is not renewable electricity. These electricity emissions have been offset by another Climate Active member through their electricity product certification. This electricity consumption is also included in the market based and location-based summary tables. Any electricity that has been sourced as renewable electricity by the electricity product under the market-based method is outlined as such in the market based summary table.</i>		

APPENDIX C: INSIDE EMISSIONS BOUNDARY

Non-quantified emission sources

The following emissions sources have been assessed as relevant, are captured within the emissions boundary, but are not measured (quantified) in the carbon inventory. They have been non-quantified due to one of the following reasons:

1. **Immaterial** <1% for individual items and no more than 5% collectively
2. **Cost effective** Quantification is not cost effective relative to the size of the emission but uplift applied.
3. **Data unavailable** Data is unavailable but uplift applied. A data management plan must be put in place to provide data within 5 years.
4. **Maintenance** Initial emissions non-quantified but repairs and replacements quantified.

Relevant non-quantified emission sources	Justification reason
Refrigerants	Emissions are immaterial
Green waste	Emissions are immaterial

Data management plan for non-quantified sources

There are no non-quantified sources in the emission boundary that require a data management plan.

APPENDIX D: OUTSIDE EMISSIONS BOUNDARY

Excluded emission sources

The below emission sources have been assessed as not relevant to this organisation's operations and are outside of its emissions boundary. These emissions are not part of the carbon neutral claim. Emission sources considered for relevance must be included within the certification boundary if they meet two of the five relevance criteria. Those which only meet one condition of the relevance test can be excluded from the certification boundary.

Emissions tested for relevance are detailed below against each of the following criteria:

1. **Size** The emissions from a particular source are likely to be large relative to the organisation's electricity, stationary energy and fuel emissions.
2. **Influence** The responsible entity has the potential to influence the reduction of emissions from a particular source.
3. **Risk** The emissions from a particular source contribute to the organisation's greenhouse gas risk exposure.
4. **Stakeholders** Key stakeholders deem the emissions from a particular source are relevant.
5. **Outsourcing** The emissions are from outsourced activities previously undertaken within the organisation's boundary, or from outsourced activities typically undertaken within the boundary for comparable organisations.

Excluded emissions sources summary

Emission sources tested for relevance	Size	Influence	Risk	Stakeholders	Outsourcing	Justification
Capital expenditures (air con, climbing equipment & apparel, IT & plant equipment)	Y	N	N	N	N	<p>Size: The emissions source is likely to be around 20% of the total carbon inventory.</p> <p>Influence: We do not have the potential to influence the emissions from this source, including by shifting to a different lower-emissions supplier for our business.</p> <p>Risk: There are no relevant laws or regulations that apply to limit emissions specifically from this source, the source does not create supply chain risks, and it is unlikely to be of significant public interest.</p> <p>Stakeholders: Key stakeholders, including the public, are unlikely to consider this a relevant source of emissions for our business.</p> <p>Outsourcing: We have not previously undertaken this activity within our emissions boundary and comparable organisations do not typically undertake this activity within their boundary.</p>



An Australian Government Initiative

