



PUBLIC DISCLOSURE STATEMENT


ISPT PTY LTD

ORGANISATION CERTIFICATION
FY2022–23

Australian Government

Climate Active Public Disclosure Statement



NAME OF CERTIFIED ENTITY	ISPT PTY LTD
REPORTING PERIOD	1 July 2022 – 30 June 2023 Arrears report
DECLARATION	<p><i>To the best of my knowledge, the information provided in this public disclosure statement is true and correct and meets the requirements of the Climate Active Carbon Neutral Standard.</i></p> <p></p> <p>Steven Peters Chief Sustainability Officer 18 March 2024</p>



Australian Government
Department of Climate Change, Energy,
the Environment and Water

Public Disclosure Statement documents are prepared by the submitting organisation. The material in the Public Disclosure Statement document represents the views of the organisation and do not necessarily reflect the views of the Commonwealth. The Commonwealth does not guarantee the accuracy of the contents of the Public Disclosure Statement document and disclaims liability for any loss arising from the use of the document for any purpose.

Version August 2023.



1.CERTIFICATION SUMMARY

TOTAL EMISSIONS OFFSET	30,808.51 tCO ₂ -e
OFFSETS USED	100% ACCUs
RENEWABLE ELECTRICITY	84.25%
CARBON ACCOUNT	Prepared by: Energetics Pty Ltd
TECHNICAL ASSESSMENT	Danica Romero Energetics Pty Ltd November 2023

Contents

1. Certification summary.....	3
2. Carbon neutral information.....	4
3. Emissions boundary.....	7
4. Emissions reductions	9
5. Emissions summary	11
6. Carbon offsets.....	14
7. Renewable Energy Certificate (REC) Summary	23
Appendix A: Additional Information.....	34
Appendix B: Electricity summary.....	35
Appendix C: Inside emissions boundary	39
Appendix D: Outside emissions boundary	39

2. CARBON NEUTRAL INFORMATION

Description of certification

At ISPT, we recognise our duty to anticipate and manage the impacts of climate change as part of our approach to responsible investment. We aim to mitigate the impact on our portfolio and operations through the efficient and effective use of natural resources to drive net positive environmental outcomes.

ISPT is committed to taking immediate action on climate change through carbon neutral certification. We've accomplished this carbon neutral position by managing climate risks in our portfolio and operations through energy efficiency, onsite renewables, offsite renewables through Power Purchase Agreements (PPAs), and then by offsetting the remainder of emissions with the use of 100% Australian Carbon Credit Units (ACCUs).

This Climate Active certification is for the Australian operations of ISPT Pty Ltd (ABN 28 064 041 283) and represents carbon neutrality for all emissions associated with our corporate and property operations, including: our headquarters located in Melbourne and other offices in Sydney and Brisbane; and all properties under ISPT's operational control. Certification applies to joint venture (JV) arrangements where ISPT has operational control; however, does not cover JV and co-venture activities where an ISPT entity is an investor, without an active role in operational matters.

ISPT's baseline year is the financial year ending on 30 June 2019 (FY19) and its first year of certification was FY20.

Organisation description

ISPT is a leading Australian property fund manager, with funds under management of \$21.5 billion as at 30 June 2023. We operate a unique profit-to-investor business model and are committed to responsibly placing Investors' funds in the property sector to optimise returns.

About ISPT

For nearly 30 years our properties have been meaningful places for the retailers, companies, government departments and communities that use them. We generate returns for our Investors, some of Australia's largest industry superannuation funds, and ultimately the 50%+ of working Australians who have their retirement savings invested in property through us.

ISPT's \$21.5 billion portfolio invests in and develops property assets across various sectors including retail, office, industrial, education, and health & life sciences in Australia. Our investment is focused in Australia, and we currently do not own any international assets.

Responsible investing

At ISPT, we take a responsible approach to investing, which means everything we do is underpinned by our commitment to Environmental, Social and Governance (ESG) excellence. Our purpose is much bigger than investing in property. It is one that embraces building a better and more sustainable future for our investors, customers, and communities. We all have a part to play in fulfilling this commitment for future generations.

Corporate structure

ISPT is seeking Climate Active certification for the Australian operations of ISPT Pty Ltd (ABN 28 064 041 283).

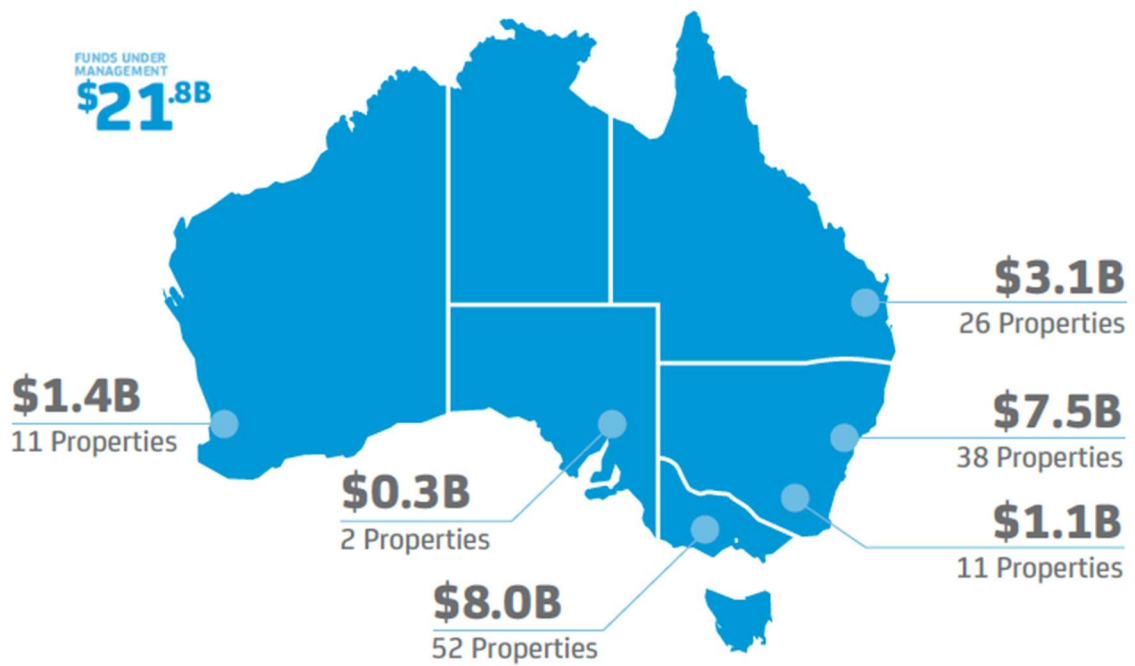
ISPT includes ISPT Pty Ltd, ISPT Operations Pty Ltd, the relevant trusts for which ISPT Pty Ltd, ISPT Nominees Pty Ltd and ISPT Custodians Pty Ltd are trustee and other related bodies corporate of ISPT Pty Ltd within the meaning of the *Corporations Act 2001* (Cth) (collectively referred to as ISPT).

ISPT Pty Ltd is trustee for the following main ISPT trusts:

- The Industry Superannuation Property Trust No.1 and the Industry Superannuation Property Trust No.2 (collectively referred to as the ISPT Core Fund),
- ISPT 50 Lonsdale Street Property Trust,
- ISPT Retail Australia Property Trust No.1 and ISPT Retail Australia Property Trust No.2 (collectively referred to as IRAPT), and
- ISPT Community Infrastructure Property Fund.

This Climate Active certification is submitted for the properties within the ISPT Core Fund, ISPT 50 Lonsdale Street Property Trust, IRAPT, and corporate office tenancies only.

ISPT Pty Ltd geographical boundary



3.EMISSIONS BOUNDARY

Inside the emissions boundary

All emission sources listed in the emissions boundary are part of the carbon neutral claim.

Quantified emissions have been assessed as relevant and are quantified in the carbon inventory. This may include emissions that are not identified as arising due to the operations of the certified entity, however are **optionally included**.

Non-quantified emissions have been assessed as relevant and are captured within the emissions boundary, but are not measured (quantified) in the carbon inventory. All material emissions are accounted for through an uplift factor. Further detail is available at Appendix C.

Outside the emissions boundary

Excluded emissions are those that have been assessed as not relevant to an organisation's or precinct's operations and are outside of its emissions boundary or are outside of the scope of the certification. These emissions are not part of the carbon neutral claim. Further detail is available at Appendix D.

Inside emissions boundary

Quantified

Advertising
Refrigerants
Employee commute
Working from home
Flights – business
Food & catering
Office furniture
Office stationery
Postage and couriers
Printing and paper
Solid waste – landfill
Solid waste – recycling
Taxis and car share services
Telecommunications
Water supply
Accommodation
Electricity
Fuel – stationary liquid and gas fuels

Non-quantified

Optionally included

Outside emission boundary

Excluded

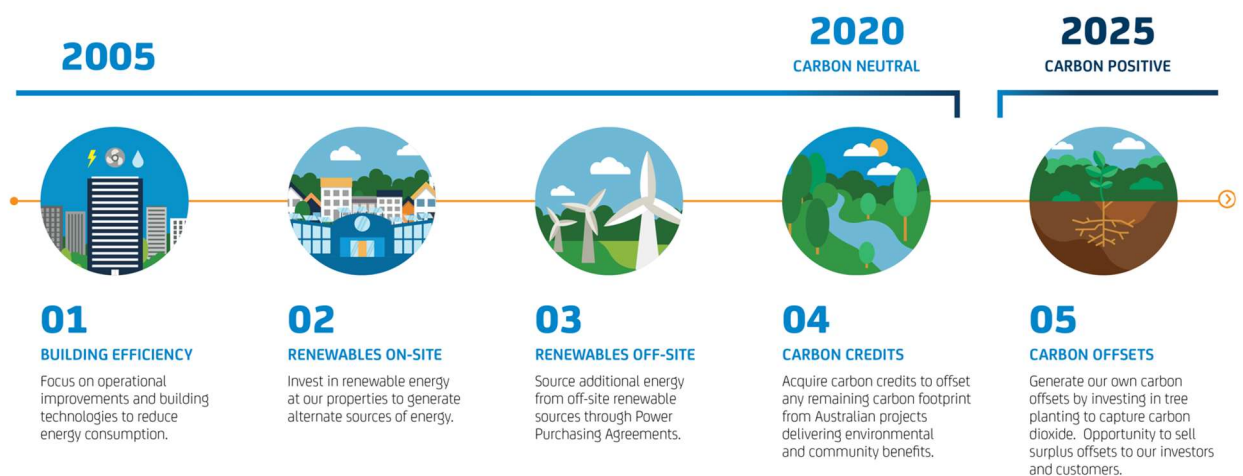
Building embodied energy
Maintenance and repairs
Tenant operations - electricity
Cleaning services

4.EMISSIONS REDUCTIONS

Emissions reduction strategy

ISPT is proud of our environmentally sustainable property portfolio. We take great care to conserve our resources, mitigate climate change impacts and operate in a way that minimises our footprint on the globe. Achieving carbon neutrality is the result of our ESG initiatives and wider program addressing climate change over many years.

Our pathway to achieving carbon neutrality focuses on energy efficiency, solar photovoltaic (PV) rollout, and on-site and off-site renewables through PPAs. Our carbon neutral pathway is outlined in the diagram below.



This carbon strategy seeks to reduce reliance on fossil fuels with a target of being 100% powered by renewable energy by 2025. We aim to achieve this target through the continued roll out of our National Solar PV Project, and further PPAs. Once implemented we expect our total carbon footprint to have been reduced by approximately 75% compared to our FY2020 baseline.

As part of ISPT's ambitious Flag on the Hill targets, we are also aiming to send zero organic waste to landfill, and achieve a 30% reduction in water use by 2025 against a FY2020 baseline.

Emissions reduction actions

ISPT has made great strides in reducing our emissions footprint.

- Our national solar PV rollout is one way we're future-proofing our buildings and responsibly investing in a low carbon future. We've now completed Stages 1, 2 and 3 of the program and through 2023, we progressed our initiatives in Stage 4 and commenced Stage 5 of the project.
 - As at the end of FY2023, a total of 49 solar PV systems across 48 properties have now been installed under ISPT's National Solar PV Pathway, representing 61% of our 100% owned and managed properties being powered by renewable energy.
- Stage 4 is focused on investigating new technologies such as battery storage, building integrated PV (BIPV), and virtual energy networks, to further reduce our reliance on grid energy. Stage 5, currently involving the installation of 12 new solar PV systems on ISPT property rooftops, commenced in mid-2022. By the end of FY2023, six new projects were energised, with the remaining projects in design and construction. Collectively, these will generate over 3,777MWh per annum of clean energy. Through the installation of on-site solar PV, together with the procurement of renewable energy via long-term PPAs, 84% of our portfolio is now powered by renewable energy.
- We've already seen a 25% absolute reduction in water consumption in FY2023 compared to the FY2020 baseline year.
- The amount of organic waste diverted from landfill across the portfolio increased by 162% in FY2023 compared to FY2020.
- We have also entered a forward contract to purchase ACCUs for FY2023 to FY2025. This will allow us to manage future price risk and ensure we have access to high-quality ACCUs that meet our overarching offset principles of Australian-based credits with environmental and social co-benefits.
- An important step towards our carbon positive goal is our ability to self-generate ACCUs to meet our own offset requirements. We are making progress with a carbon conservation landbank and we're actively searching for large blocks of land to plant trees, sequester carbon and start the self-generation process that will supply high-quality nature-based offsets for our properties. The aim is to sequester more carbon than we use, setting us on the path to a carbon positive future.

5.EMISSIONS SUMMARY

Emissions over time

ISPT's emissions have been decreasing steadily over time. Emissions in FY23 have decreased by 338 tCO₂-e compared to FY22. This decrease was primarily driven by continuous rollout of solar PV on our properties, and purchase of off-site renewable sources through PPAs. Total renewable energy increased from 81.32% in FY22 to 84.25% in FY23.

Emissions since base year		
		Total tCO ₂ -e
Base year:	2018-19	73,615* (Normalised footprint of 84,180 based on new boundaries)
Year 1:	2019-20	79,844 Location based 72,990 Market based
Year 2:	2020-21	51,846**
Year 3:	2021-22	31,147
Year 4:	2022-23	30,809

*From FY20, ISPT has voluntarily included whole building emissions from waste and water in its certification boundary. The normalised footprint for FY19 mirroring these boundaries is listed above for comparative purposes.

**From FY21, ISPT is reporting electricity emissions using a market-based approach.

Significant changes in emissions

The table below summarises individual emissions source that have significant changes in FY23 compared to FY22.

Emission source name	Previous year emissions (tCO ₂ -e)	Current year emissions (tCO ₂ -e)	Detailed reason for change
Total net electricity emissions (Market based)	10,511	8,768	ISPT has increased renewable electricity generation behind the meter and off-site renewables procurement.
Natural Gas VIC (metro) (GJ)	1,787	2,304	Gas consumption increased due to a general increase in persons onsite post-pandemic and because of some jurisdictions

			<p>experiencing cooler than average days throughout the year.</p> <p>Additionally, new gas consuming developments reached practical completion and commenced operation during the reporting period.</p>
Short economy class flights (>400km, ≤3,700km)	106	333	Due to the easing of Covid restrictions, business travel has increased year on year.
Medium Car: unknown fuel	229	17	<p>Previously, the Climate Active, Staff Commute calculator pre-populated vehicle use using national averages. This over-estimated the use of cars by CBD commuters.</p> <p>This year, we were required to input vehicle use frequencies and calculated values reflective of an ISPT employee.</p>
Working from home	-31	93	Working from home is now calculated using result A from the WFH calculator by importing employee speed gate data. In prior years, WFH was calculated based on staff commute.

Use of Climate Active carbon neutral products, services, buildings or precincts

ISPT is currently investigating options for engaging carbon neutral suppliers in the future.

Emissions summary

The electricity summary is available in the Appendix B. Electricity emissions were calculated using a market-based approach.

Emission category	Sum of Scope 1 (tCO ₂ -e)	Sum of Scope 2 (tCO ₂ -e)	Sum of Scope 3 (tCO ₂ -e)	Sum of Total Emissions (tCO ₂ -e)
Accommodation and facilities	-	-	44.46	44.46
Electricity	-	7,743.94	1,024.93	8,768.88
Food	-	-	107.42	107.42
ICT services and equipment	-	-	25.24	25.24
Postage, courier and freight	-	-	6.58	6.58
Professional services	-	-	32.76	32.76
Refrigerants	3,781.46	-	-	3,781.46
Stationary energy (gaseous fuels)	4,503.86	-	720.57	5,224.43
Stationary energy (liquid fuels)	19.46	-	4.79	24.25
Transport (air)	-	-	378.93	378.93
Transport (land and sea)	-	-	82.45	82.45
Waste	-	-	10,501.96	10,501.96
Water	-	-	1,726.77	1,726.77
Working from home	-	-	93.02	93.02
Office equipment and supplies	-	-	9.90	9.90
Total	8,304.77	7,743.94	14,759.79	30,808.51

Uplift factors

An uplift factor is an upwards adjustment to the total carbon inventory to account for relevant emissions that cannot be reasonably quantified or estimated. This conservative accounting approach helps ensure the integrity of the carbon neutral claim.

Reason for uplift factor	tCO ₂ -e
n/a	
Total of all uplift factors	n/a
Total footprint to offset <i>(total net emissions from summary table + total uplifts)</i>	30,809

6. CARBON OFFSETS

Offsets retirement approach

This certification has taken an in-arrears offsetting approach. The total emission to offset is 30,809 tCO₂-e. The total number of eligible offsets used in this report is 30,809 tCO₂-e. Of the total eligible offsets used, 14,863 tCO₂-e were previously banked and 25,500 tCO₂-e were newly purchased and retired. 9,554 tCO₂-e are remaining and have been banked for future use.

Co-benefits

SOUTHERN RIVERS INITIATIVE SITE #3 – HUMAN-INDUCED REGENERATION PROJECT

Project Description

Located in the Quilpie shire of south-west Queensland, this project aims to increase carbon sequestration by regenerating native forest at the Aldville Station. The property had previously been used for heavy cattle grazing, severely degrading the land.

This project establishes permanent native forest, through assisted regeneration from in-situ seed sources, on land that was cleared of vegetation and where regrowth was suppressed for at least 10 years prior to the project having commenced. A program of regular and reduced stock rotation has been introduced to allow for land recovery after grazing.

Co-Benefits:

- Regeneration of degraded land and protection for up to 100 years,
- Improved biodiversity through regeneration of habitat for native flora and fauna species,
- Farming infrastructure investment,
- Improved business sustainability and drought resilience, and
- A second source of income to farmers.

PAROO RIVER NORTH ENVIRONMENTAL PROJECT

Project Description

Located in southwest Queensland, the Paroo River North Environmental Project aims to increase carbon sequestration by regenerating native forest at the Yerrel and Humeburn Station - a property previously run as a cattle breeding block.

Agricultural practices caused significant suppression of native vegetation, in particular due to the cattle run on station. The project counters this by altering the movement of livestock and promoting anti-suppression activities throughout the property.

Co-benefits:

- Protection of 18 km of riparian zones along the Paroo River,
- Regeneration of 38,000 hectares of native forest,
- An increase in bush tucker availability and involvement from Indigenous communities,
- Allows the Budjiti Indigenous people, who have native title interest on land that the property covers, access to traditional lands for cultural and heritage objectives, and
- The land has been used for an 'on country' program providing support for community members in need.

CENTRAL ARNHAM LAND FIRE ABATEMENT (CALFA) PROJECT

Project Description

The Central Arnhem Land Fire Abatement (CALFA) project is one of five registered savanna burning projects under ALFA (NT) Limited – Arnhem Land Fire Abatement – an entirely Aboriginal-owned and not-for-profit carbon farming business.

Customary knowledge and modern tools are used to accomplish highly sophisticated fire management. The work uses a savanna burning methodology that calculates a reduction in wildfire emissions through controlled, early season burning. In the absence of such management, fires occur predominantly in the late dry season as high intensity wildfires. Greenhouse gas emissions are much greater from late dry season fires than from early dry season fires.

Co-benefits:

- All funds generated from the sale of ALFA ACCUs are reinvested back into the community-based Indigenous ranger groups providing local employment while preserving culture and the environment,
- Through ALFA fire projects, Indigenous people are supported in returning to, working, and remaining on country,
- Indigenous land knowledge and language is preserved, and

- The protection of critically endangered species.

TALLERING STATION HUMAN INDUCED REGENERATION PROJECT

Project Description

Tallering Station is a pastoral lease operating as cattle station in the mid-west region of Western Australia. Over 200 years of grazing, had left the land suffering from unduly high and sustained impacts from goats and sheep and reported unacceptably high rates of mature Acacia death.

The Project establishes permanent native forest through assisted regeneration of shrubland and forest on 75,000 ha of land.

Co-benefits

- Supports infrastructure upgrades including new fencing and water points,
- Feral animal population management,
- Recovery of native vegetation and the regeneration of 'at risk' landscape,
- Protection of habitat and threatened native flora and fauna, and
- A second source of income to farmers.

Eligible offsets retirement summary

Offsets cancelled for Climate Active Carbon Neutral Certification													
Project description	Type of offset units	Registry	Date retired	Serial number (and hyperlink to registry transaction record)		Vintage	Stapled quantity	Eligible quantity (tCO ₂ -e)	Eligible quantity used for previous reporting periods	Eligible quantity banked for future reporting periods	Eligible quantity used for this reporting period	Percentage of total (%)	
ERF104646 : Paroo River North Environmental Project EOP100947: Central Arnhem Land Fire Abatement (CALFA) Project ERF121770: Tallering Station Human Induced Regeneration Project	ACCUs	ANREU	11 Nov 2021	<div>Serial Range</div> <div>Quantit</div>		2021		75,457	63,137		12,320	40%	
				3,801,570,856 - 3,801,574,178									3,323
				3,802,560,381 - 3,802,565,887									5,507
				3,803,412,187 - 3,803,417,766									5,580
				3,807,578,612 - 3,807,580,501									1,890
				3,808,939,202 - 3,808,944,694									5,493
				3,809,853,496 - 3,809,858,580									5,085
				3,810,038,958 - 3,810,043,920									4,963
				8,323,085,623 - 8,323,086,932									1,310
				8,328,765,821 - 8,328,771,187									5,367
				8,323,086,933 - 8,323,090,511									3,579
				8,324,394,966 - 8,324,398,805									3,840
				8,325,717,185 - 8,325,720,353									3,169
				8,326,906,249 - 8,326,907,599									1,351
				3,799,671,346 - 3,799,675,518									4,173
				3,800,777,418 - 3,800,792,002									14,585
				8,332,229,083 - 8,332,235,324									6,242

ERF104646: Paroo River North Environmental Project	ACCUs	ANREU	11 Nov 2021	<table><tr><th>Serial Range</th><th>Quantity</th></tr><tr><td>3,804,827,667 - 3,804,833,466</td><td>5,800</td></tr><tr><td>3,807,574,905 - 3,807,578,611</td><td>3,707</td></tr><tr><td>8,332,220,579 - 8,332,229,082</td><td>8,504</td></tr></table>	Serial Range	Quantity	3,804,827,667 - 3,804,833,466	5,800	3,807,574,905 - 3,807,578,611	3,707	8,332,220,579 - 8,332,229,082	8,504	2021		18,011	16,541		1,470	5%
Serial Range	Quantity																		
3,804,827,667 - 3,804,833,466	5,800																		
3,807,574,905 - 3,807,578,611	3,707																		
8,332,220,579 - 8,332,229,082	8,504																		
ERF121770: Tallering Station Human Induced Regeneration Project																			
ERF104646: Paroo River North Environmental Project	ACCUs	ANREU	11 Nov 2021	<table><tr><th>Serial Range</th><th>Quantity</th></tr><tr><td>3,801,569,856 - 3,801,570,855</td><td>1,000</td></tr><tr><td>8,332,254,581 - 8,332,256,030</td><td>1,450</td></tr></table>	Serial Range	Quantity	3,801,569,856 - 3,801,570,855	1,000	8,332,254,581 - 8,332,256,030	1,450	2021		2,450	1,453		997	3%		
Serial Range	Quantity																		
3,801,569,856 - 3,801,570,855	1,000																		
8,332,254,581 - 8,332,256,030	1,450																		
ERF121770: Tallering Station Human Induced Regeneration Project																			

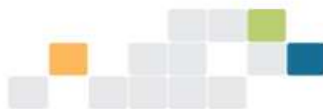
ERF104646: Paroo River North Environmental Project	ACCUs	ANREU	11 Nov 2021	<table><tr><th>Serial Range</th><th>Quantity</th></tr><tr><td>3,801,568,774 - 3,801,569,855</td><td>1,082</td></tr></table>	Serial Range	Quantity	3,801,568,774 - 3,801,569,855	1,082	2021		1,082	1,006		76	0%
Serial Range	Quantity														
3,801,568,774 - 3,801,569,855	1,082														
ERF121770: Tallering Station Human Induced Regeneration Project	ACCUs	ANREU	13 Oct 2023	8,332,256,031 - 8,332,256,563 8,332,235,325 - 8,332,254,580 8,333,310,641 - 8,333,316,351	2021		25,500		9,554	15,946	52%				
ERF111058: Catchment Conservation Alliance - Southern Rivers Initiative Site #3															
Total offsets retired this report and used in this report										30,809					
Total offsets retired this report and banked for future reports									9,554						

Type of offset units	Eligible quantity (used for this reporting period)	Percentage of total
Australian Carbon Credit Units (ACCUs)	30,809	100%



Australian Government
Clean Energy Regulator

OFFICIAL



17 May 2023

VC202223-00157

To whom it may concern,

Voluntary cancellation of units in ANREU

This letter is confirmation of the voluntary cancellation of units in the Australian National Registry of Emissions Units (ANREU) by ANREU account holder, Commonwealth Bank of Australia (account number AU-1021).

The details of the cancellation are as follows:

Date of transaction		11 November 2021
Transaction ID		AU20286
Type of units		KACCU
Total Number of units		75,457
Block 1	Serial number range	3,801,570,856 - 3,801,574,178 (3,323 KACCU)
	ERF Project	Paroo River North Environmental Project – ERF104646
	Vintage	2020-21
Block 2	Serial number range	3,802,560,381 - 3,802,565,887 (5,507 KACCU)
	ERF Project	Paroo River North Environmental Project – ERF104646
	Vintage	2020-21
Block 3	Serial number range	3,803,412,187 - 3,803,417,766 (5,580 KACCU)
	ERF Project	Paroo River North Environmental Project – ERF104646
	Vintage	2020-21
Block 4	Serial number range	3,807,578,612 - 3,807,580,501 (1,890 KACCU)
	ERF Project	Paroo River North Environmental Project – ERF104646
	Vintage	2020-21
Block 5	Serial number range	3,808,939,202 - 3,808,944,694 (5,493 KACCU)
	ERF Project	Paroo River North Environmental Project – ERF104646
	Vintage	2020-21
Block 6	Serial number range	3,809,853,496 - 3,809,858,580 (5,085 KACCU)
	ERF Project	Paroo River North Environmental Project – ERF104646
	Vintage	2020-21
Block 7	Serial number range	3,810,038,958 - 3,810,043,920 (4,963 KACCU)
	ERF Project	Paroo River North Environmental Project – ERF104646
	Vintage	2020-21
Block 8	Serial number range	8,323,085,623 - 8,323,086,932 (1,310 KACCU)



OFFICIAL

OFFICIAL



Block 9	ERF Project	Paroo River North Environmental Project – ERF104646
	Vintage	2020-21
	Serial number range	8,328,765,821 - 8,328,771,187 (5,367 KACCU)
Block 10	ERF Project	Paroo River North Environmental Project – ERF104646
	Vintage	2020-21
	Serial number range	8,323,086,933 - 8,323,090,511 (3,579 KACCU)
Block 11	ERF Project	Paroo River North Environmental Project – ERF104646
	Vintage	2020-21
	Serial number range	8,324,394,966 - 8,324,398,805 (3,840 KACCU)
Block 12	ERF Project	Paroo River North Environmental Project – ERF104646
	Vintage	2020-21
	Serial number range	8,325,717,185 - 8,325,720,353 (3,169 KACCU)
Block 13	ERF Project	Paroo River North Environmental Project – ERF104646
	Vintage	2020-21
	Serial number range	8,326,906,249 - 8,326,907,599 (1,351 KACCU)
Block 14	ERF Project	Paroo River North Environmental Project – ERF104646
	Vintage	2019-20
	Serial number range	3,799,671,346 - 3,799,675,518 (4,173 KACCU)
Block 15	ERF Project	Central Arnhem Land Fire Abatement (CALFA) Project – EOP100947
	Vintage	2019-20
	Serial number range	3,800,777,418 - 3,800,792,002 (14,585 KACCU)
Block 16	ERF Project	Tallering Station Human Induced Regeneration Project – ERF121770
	Vintage	2021-22
	Serial number range	8,332,229,083 - 8,332,235,324 (6,242 KACCU)
Transaction comment		Retired on behalf of ISPT Pty Ltd to support its obligations under Climate Active carbon neutral certification

Details of all voluntary cancellations in the ANREU are published on the Clean Energy Regulator's website, <http://www.cleanenergyregulator.gov.au/OSR/ANREU/Data-and-information>.

If you require additional information about the above transaction, please email CER-RegistryContact@cer.gov.au

Yours sincerely,

David O'Toole
ANREU and International
NGER and Safeguard Branch
Scheme Operations Division
Clean Energy Regulator CER-RegistryContact@cer.gov.au www.cleanenergyregulator.gov.au

W: www.cleanenergyregulator.gov.au | T: 1300 553 542 | E: enquiries@cleanenergyregulator.gov.au

OFFICIAL

2

16 November 2021

To whom it may concern,

Voluntary cancellation of units in ANREU

This letter is confirmation of the voluntary cancellation of units in the Australian National Registry of Emissions Units (ANREU) by ANREU account holder, Commonwealth Bank of Australia (account number AU-1021).

The details of the cancellation are as follows:

Date of transaction	11 November 2021
Transaction ID	AU20281
Type of units	KACCU
Total number of units	1,082
Serial number range (ERF Project ID)	3,801,568,774 - 3,801,569,855 (ERF104646)
Associated ERF Project Name	Paroo River North Environmental Project
Transaction comment	Retired on behalf of ISPT Pty Ltd to support its obligations under Climate Active carbon neutral certification

Details of all voluntary cancellations in the ANREU are published on the Clean Energy Regulator's website, <http://www.cleanenergyregulator.gov.au/OSR/ANREU/Data-and-information>.

If you require additional information about the above transaction, please email registry-contact@cleanenergyregulator.gov.au

Yours sincerely,



David O'Toole
ANREU Operations and International Engagement
NGER and Safeguard Branch
Scheme Operations Division
Clean Energy Regulator
registry-contact@cleanenergyregulator.gov.au
www.cleanenergyregulator.gov.au

16 November 2021

To whom it may concern,

Voluntary cancellation of units in ANREU

This letter is confirmation of the voluntary cancellation of units in the Australian National Registry of Emissions Units (ANREU) by ANREU account holder, Commonwealth Bank of Australia (account number AU-1021).

The details of the cancellation are as follows:

Date of transaction	11 November 2021
Transaction ID	AU20284
Type of units	KACCU
Total number of units	2,450
Serial number range (ERF Project ID – ERF Project Name – Unit Quantity)	3,801,569,856 - 3,801,570,855 (ERF104646 – Paroo River North Environmental Project – 1,000 KACCUS) 8,332,254,581 - 8,332,256,030 (ERF121770 – Tallering Station Human Induced Regeneration Project – 1,450 KACCUS)
Transaction comment	Retired on behalf of ISPT Pty Ltd to support its obligations under Climate Active carbon neutral certification

Details of all voluntary cancellations in the ANREU are published on the Clean Energy Regulator's website, <http://www.cleanenergyregulator.gov.au/OSR/ANREU/Data-and-information>.

If you require additional information about the above transaction, please email registry-contact@cleanenergyregulator.gov.au

Yours sincerely,



David O'Toole
ANREU Operations and International Engagement
NGER and Safeguard Branch
Scheme Operations Division
Clean Energy Regulator
registry-contact@cleanenergyregulator.gov.au
www.cleanenergyregulator.gov.au

16 November 2021

To whom it may concern,

Voluntary cancellation of units in ANREU

This letter is confirmation of the voluntary cancellation of units in the Australian National Registry of Emissions Units (ANREU) by ANREU account holder, Commonwealth Bank of Australia (account number AU-1021).

The details of the cancellation are as follows:

Date of transaction	11 November 2021
Transaction ID	AU20284
Type of units	KACCU
Total number of units	18,011
Serial number range (ERF Project ID – ERF Project Name – Unit Quantity)	3,804,827,667 - 3,804,833,466 (ERF104646 – Paroo River North Environmental Project – 5,800 KACCUs) 3,807,574,905 - 3,807,578,611 (ERF104646 – Paroo River North Environmental Project – 3,707 KACCUS) 8,332,220,579 - 8,332,229,082 (ERF121770 – Tallering Station Human Induced Regeneration Project – 8,504 KACCUS)
Transaction comment	Retired on behalf of ISPT Pty Ltd to support its obligations under Climate Active carbon neutral certification

Details of all voluntary cancellations in the ANREU are published on the Clean Energy Regulator's website, <http://www.cleanenergyregulator.gov.au/OSR/ANREU/Data-and-information>.

If you require additional information about the above transaction, please email registry-contact@cleanenergyregulator.gov.au

Yours sincerely,



David O'Toole
ANREU Operations and International Engagement
NGER and Safeguard Branch
Scheme Operations Division
Clean Energy Regulator
registry-contact@cleanenergyregulator.gov.au
www.cleanenergyregulator.gov.au

OFFICIAL

7. RENEWABLE ENERGY CERTIFICATE (REC) SUMMARY

Renewable Energy Certificate (REC) summary

The following RECs have been surrendered to reduce electricity emissions under the market-based reporting method.

1. Large-scale Generation certificates (LGCs)*	27,536
2. Other RECs – LGC from behind the meter solar	5,917

* LGCs in this table only include those surrendered voluntarily (including through PPA arrangements) and does not include those surrendered in relation to the LRET, GreenPower, and jurisdictional renewables.

Project supported by LGC purchase	Project location	Eligible type	unit	Registry	Surrender date	Accreditation code	Certificate number	serial	Generation year	Fuel source	Quantity (MWh)
MREP2 - Vic PPA	VIC, Australia	LGC		REC Registry	25/10/2023	WD00VC32	226546-227246		2020	Wind	701
MREP2 - Vic PPA	VIC, Australia	LGC		REC Registry	25/10/2023	WD00VC32	220289-220921		2020	Wind	633
Pacific Hydro - 4084, 5069, Apr 23	VIC, Australia	LGC		REC Registry	25/10/2023	WD00VC32	185628-187315		2022	Wind	1688
Pacific Hydro - 4084, 5069, Apr 23	VIC, Australia	LGC		REC Registry	25/10/2023	WD00VC32	44065-46027		2022	Wind	1963
Pacific Hydro - 4084, 5069, Apr 23	VIC, Australia	LGC		REC Registry	25/10/2023	WD00VC32	34727-37122		2022	Wind	2396

MREP2 - Vic PPA	VIC, Australia	LGC	REC Registry	25/10/2023	WD00VC26	30234-30933	2022	Wind	700
MREP2 - Vic PPA	VIC, Australia	LGC	REC Registry	25/10/2023	WD00VC26	26367-30233	2022	Wind	3867
IBERDROLA A 8,340 LGCs, Jan 23	NSW, Australia	LGC	REC Registry	25/10/2023	WD00NS16	252388-260192	2022	Wind	7805
IBERDROLA A, 7908 LGCs, Aug 23	NSW, Australia	LGC	REC Registry	25/10/2023	WD00NS16	290701-290881	2022	Wind	181
IBERDROLA A, 7908 LGCs, Aug 23	NSW, Australia	LGC	REC Registry	25/10/2023	WD00NS16	68389-75626	2023	Wind	7238
Onsite solar	QLD, Australia	LGC	REC Registry	25/10/2023	SRPVQLU9	25-30	2022	Solar	6
Onsite solar	QLD, Australia	LGC	REC Registry	25/10/2023	SRPVQLU9	198-227	2022	Solar	30
Onsite solar	QLD, Australia	LGC	REC Registry	25/10/2023	SRPVQLU9	169-197	2022	Solar	29
Onsite solar	QLD, Australia	LGC	REC Registry	25/10/2023	SRPVQLU9	145-168	2022	Solar	24
Onsite solar	QLD, Australia	LGC	REC Registry	25/10/2023	SRPVQLU9	122-144	2022	Solar	23
Onsite solar	QLD, Australia	LGC	REC Registry	25/10/2023	SRPVQLU9	100-121	2022	Solar	22
Onsite solar	QLD, Australia	LGC	REC Registry	25/10/2023	SRPVQLU9	81-99	2022	Solar	19

Onsite solar	QLD, Australia	LGC	REC Registry	25/10/2023	SRPVQLU9	62-80	2022	Solar	19
Onsite solar	QLD, Australia	LGC	REC Registry	25/10/2023	SRPVQLU9	47-61	2022	Solar	15
Onsite solar	QLD, Australia	LGC	REC Registry	25/10/2023	SRPVQLQ0	746-906	2022	Solar	161
Onsite solar	QLD, Australia	LGC	REC Registry	25/10/2023	SRPVQLQ0	730-745	2022	Solar	16
Total LGCs surrendered this report and used in this report									27,536

Onsite Solar

Project supported by LGC purchase	Project location	Eligible unit type	Registry	Surrender date	Accreditation code	Certificate serial number	Generation year	Fuel source	Quantity (MWh)
Onsite solar	ACT	LGC	REC Registry	17/10/2023	SRPVAC19	258-289	2023	Solar	32
Onsite solar	NSW	LGC	REC Registry	17/10/2023	SRPXNS99	158-175	2023	Solar	18
Onsite solar	NSW	LGC	REC Registry	17/10/2023	SRPXNS27	316-359	2023	Solar	44
Onsite solar	NSW	LGC	REC Registry	17/10/2023	SRPVNSR4	124-140	2023	Solar	17
Onsite solar	NSW	LGC	REC Registry	17/10/2023	SRPVNSN1	165-187	2023	Solar	23
Onsite solar	NSW	LGC	REC Registry	17/10/2023	SRPVNSJ7	1364-1443	2023	Solar	80

Onsite solar	NSW	LGC	REC Registry	17/10/2023	SRPVNSA1	161-181	2023	Solar	21
Onsite solar	SA	LGC	REC Registry	17/10/2023	SRPVSA1	4107-4415	2023	Solar	309
Onsite solar	VIC	LGC	REC Registry	17/10/2023	SRPVVCU2	174-193	2023	Solar	20
Onsite solar	VIC	LGC	REC Registry	17/10/2023	SRPVVCR1	111-124	2023	Solar	14
Onsite solar	VIC	LGC	REC Registry	17/10/2023	SRPVVCM8	105-112	2023	Solar	8
Onsite solar	VIC	LGC	REC Registry	17/10/2023	SRPVVCK5	114-129	2023	Solar	16
Onsite solar	VIC	LGC	REC Registry	17/10/2023	SRPVVCJ9	488-534	2023	Solar	47
Onsite solar	VIC	LGC	REC Registry	17/10/2023	SRPVVCJ5	882-981	2023	Solar	100
Onsite solar	VIC	LGC	REC Registry	17/10/2023	SRPVVCJ4	1114-1236	2023	Solar	123
Onsite solar	VIC	LGC	REC Registry	17/10/2023	SRPVVCJ2	388-425	2023	Solar	38
Onsite solar	VIC	LGC	REC Registry	17/10/2023	SRPVVCF5	190-209	2023	Solar	20
Onsite solar	VIC	LGC	REC Registry	17/10/2023	SRPVVCD5	421-464	2023	Solar	44

Onsite solar	VIC	LGC	REC Registry	17/10/2023	SRPVVC83	58-63	2023	Solar	6
Onsite solar	VIC	LGC	REC Registry	17/10/2023	SRPVVC70	103-111	2023	Solar	9
Onsite solar	VIC	LGC	REC Registry	17/10/2023	SRPVVC69	486-532	2023	Solar	47
Onsite solar	VIC	LGC	REC Registry	17/10/2023	SRPVVC48	299-324	2023	Solar	26
Onsite solar	VIC	LGC	REC Registry	17/10/2023	SRPVVC44	183-200	2023	Solar	18
Onsite solar	VIC	LGC	REC Registry	17/10/2023	SRPVVCT6	481-537	2022	Solar	57
Onsite solar	VIC	LGC	REC Registry	17/10/2023	SRPVVCR1	201-227	2022	Solar	27
Onsite solar	VIC	LGC	REC Registry	17/10/2023	SRPVVCR1	124-138	2022	Solar	15
Onsite solar	VIC	LGC	REC Registry	17/10/2023	SRPVVCO2	317-356	2022	Solar	40
Onsite solar	VIC	LGC	REC Registry	17/10/2023	SRPVVCJ9	712-723	2022	Solar	12
Onsite solar	VIC	LGC	REC Registry	17/10/2023	SRPVVCF3	247-281	2022	Solar	35
Onsite solar	VIC	LGC	REC Registry	17/10/2023	SRPVVC70	48-66	2022	Solar	19

Onsite solar	VIC	LGC	REC Registry	17/10/2023	SRPVVC44	229-240	2022	Solar	12
Onsite solar	VIC	LGC	REC Registry	17/10/2023	SRPVVC37	559-640	2022	Solar	82
Onsite solar	VIC	LGC	REC Registry	17/10/2023	SRPVVC37	498-558	2022	Solar	61
Onsite solar	VIC	LGC	REC Registry	17/10/2023	SRPVVC37	454-497	2022	Solar	44
Onsite solar	VIC	LGC	REC Registry	17/10/2023	SRPVVC37	421-453	2022	Solar	33
Onsite solar	VIC	LGC	REC Registry	17/10/2023	SRPVVC37	397-420	2022	Solar	24
Onsite solar	VIC	LGC	REC Registry	17/10/2023	SRPVVC37	365-396	2022	Solar	32
Onsite solar	VIC	LGC	REC Registry	17/10/2023	SRPVVC37	318-364	2022	Solar	47
Onsite solar	VIC	LGC	REC Registry	17/10/2023	SRPVVC37	242-317	2022	Solar	76
Onsite solar	VIC	LGC	REC Registry	17/10/2023	SRPVVC37	146-241	2022	Solar	96
Onsite solar	VIC	LGC	REC Registry	17/10/2023	SRPVVC37	1-145	2022	Solar	145
Onsite solar	VIC	LGC	REC Registry	17/10/2023	SRPVVC13	102-104	2022	Solar	3

Onsite solar	VIC	LGC	REC Registry	17/10/2023	SRPVVC13	101	2022	Solar	1
Onsite solar	VIC	LGC	REC Registry	17/10/2023	SRPVVC13	99-100	2022	Solar	2
Onsite solar	VIC	LGC	REC Registry	17/10/2023	SRPVVC13	98	2022	Solar	1
Onsite solar	VIC	LGC	REC Registry	17/10/2023	SRPVVC13	96-97	2022	Solar	2
Onsite solar	VIC	LGC	REC Registry	17/10/2023	SRPVVC13	88-95	2022	Solar	8
Onsite solar	VIC	LGC	REC Registry	17/10/2023	SRPVVC13	72-87	2022	Solar	16
Onsite solar	VIC	LGC	REC Registry	17/10/2023	SRPVVC13	39-71	2022	Solar	33
Onsite solar	VIC	LGC	REC Registry	17/10/2023	SRPVVC13	Jan-38	2022	Solar	38
Onsite solar	QLD	LGC	REC Registry	17/10/2023	SRPVQLE4	356-406	2021	Solar	51
Onsite solar	QLD	LGC	REC Registry	17/10/2023	SRPVQLE4	311-355	2021	Solar	45
Onsite solar	QLD	LGC	REC Registry	17/10/2023	SRPVQLE4	255-310	2021	Solar	56
Onsite solar	QLD	LGC	REC Registry	17/10/2023	SRPVQLE4	195-254	2021	Solar	60

Onsite solar	QLD	LGC	REC Registry	17/10/2023	SRPVQLE4	146-194	2021	Solar	49
Onsite solar	QLD	LGC	REC Registry	17/10/2023	SRPVQLE4	81-145	2021	Solar	65
Onsite solar	QLD	LGC	REC Registry	17/10/2023	SRPVQLE4	1-81	2021	Solar	80
Onsite solar	QLD	LGC	REC Registry	17/10/2023	SRPVQLT5	65-91	2022	Solar	27
Onsite solar	QLD	LGC	REC Registry	17/10/2023	SRPVQLT5	36-64	2022	Solar	29
Onsite solar	QLD	LGC	REC Registry	17/10/2023	SRPVQLT5	1-35	2022	Solar	35
Onsite solar	QLD	LGC	REC Registry	17/10/2023	SRPVQLM3	618-689	2022	Solar	72
Onsite solar	QLD	LGC	REC Registry	17/10/2023	SRPVQL46	156-175	2022	Solar	20
Onsite solar	NSW	LGC	REC Registry	17/10/2023	SRPXNS69	1-80	2021	Solar	81
Onsite solar	NSW	LGC	REC Registry	17/10/2023	SRPXNS69	733-856	2022	Solar	124
Onsite solar	NSW	LGC	REC Registry	17/10/2023	SRPXNS69	645-732	2022	Solar	88
Onsite solar	NSW	LGC	REC Registry	17/10/2023	SRPXNS69	562-644	2022	Solar	83

Onsite solar	NSW	LGC	REC Registry	17/10/2023	SRPXNS69	490-561	2022	Solar	72
Onsite solar	NSW	LGC	REC Registry	17/10/2023	SRPXNS69	452-489	2022	Solar	38
Onsite solar	NSW	LGC	REC Registry	17/10/2023	SRPXNS69	388-451	2022	Solar	64
Onsite solar	NSW	LGC	REC Registry	17/10/2023	SRPXNS69	326-387	2022	Solar	62
Onsite solar	NSW	LGC	REC Registry	17/10/2023	SRPXNS69	256-325	2022	Solar	70
Onsite solar	NSW	LGC	REC Registry	17/10/2023	SRPXNS69	181-255	2022	Solar	75
Onsite solar	NSW	LGC	REC Registry	17/10/2023	SRPXNS69	97-180	2022	Solar	84
Onsite solar	NSW	LGC	REC Registry	17/10/2023	SRPVNSA1	63-71	2022	Solar	9
Onsite solar	NSW	LGC	REC Registry	17/10/2023	SRPVNSK9	163-294	2021	Solar	132
Onsite solar	QLD	LGC	REC Registry	17/10/2023	SRPVQLO9	38-69	2021	Solar	32
Onsite solar	QLD	LGC	REC Registry	17/10/2023	SRPVQLF2	170-303	2021	Solar	134
Onsite solar	QLD	LGC	REC Registry	17/10/2023	SRPVQLF1	133-244	2021	Solar	112

Onsite solar	WA	LGC	REC Registry	17/10/2023	SRPVWAA3	199-355	2021	Solar	157
Onsite solar	WA	LGC	REC Registry	17/10/2023	SRPVWA94	682-1215	2021	Solar	534
Onsite solar	SA	LGC	REC Registry	17/10/2023	SRPVSA1	973-1283	2021	Solar	311
Onsite solar	WA	LGC	REC Registry	17/10/2023	SRPVWA94	3339-3349	2020	Solar	11
Onsite solar	VIC	LGC	REC Registry	17/10/2023	SRPVVCM0	1634-1834	2020	Solar	201
Onsite solar	VIC	LGC	REC Registry	17/10/2023	SRPVVCM0	1604-1633	2020	Solar	30
Onsite solar	VIC	LGC	REC Registry	17/10/2023	SRPVVCJ9	780-898	2020	Solar	119
Onsite solar	VIC	LGC	REC Registry	17/10/2023	SRPVVCJ9	663-779	2020	Solar	117
Onsite solar	VIC	LGC	REC Registry	17/10/2023	SRPVVCJ9	580-662	2020	Solar	83
Onsite solar	VIC	LGC	REC Registry	17/10/2023	SRPVVCJ5	354-387	2020	Solar	34
Onsite solar	VIC	LGC	REC Registry	17/10/2023	SRPVVC76	1959-1975	2020	Solar	17
Onsite solar	QLD	LGC	REC Registry	17/10/2023	SRPVQLM3	457-509	2020	Solar	53

Onsite solar	SA	LGC	REC Registry	3/11/2023	SRPVSA01	5907-6134	2022	Solar	228
Onsite solar	SA	LGC	REC Registry	4/11/2023	SRPVSA82	642-668	2021	Solar	27
Onsite solar	SA	LGC	REC Registry	5/11/2023	SRPVSA01	1284-1388	2021	Solar	105
Total LGCs surrendered this report and used in this report									5,917

APPENDIX A: ADDITIONAL INFORMATION

n/a

APPENDIX B: ELECTRICITY SUMMARY

There are two international best-practice methods for calculating electricity emissions – the location-based method and the market-based method. Reporting electricity emissions under both methods is called dual reporting.

Dual reporting of electricity emissions is useful, as it provides different perspectives of the emissions associated with a business's electricity usage.

Location-based method:

The location-based method provides a picture of a business's electricity emissions in the context of its location, and the emissions intensity of the electricity grid it relies on. It reflects the average emissions intensity of the electricity grid in the location (State) in which energy consumption occurs. The location-based method does not allow for any claims of renewable electricity from grid-imported electricity usage.

Market-based method:

The market-based method provides a picture of a business's electricity emissions in the context of its renewable energy investments. It reflects the emissions intensity of different electricity products, markets and investments. It uses a residual mix factor (RMF) to allow for unique claims on the zero emissions attribute of renewables without double-counting.

For this certification, electricity emissions have been set by using the **market-based approach**.

Market-based approach summary				
Market-based approach	Activity Data (kWh)	Emissions (kg CO ₂ -e)	Renewable percentage of total	
Behind the meter consumption of electricity generated	8,460,877	0	15%	
Total non-grid electricity	8,460,877	0	15%	
LGC Purchased and retired (kWh) (including PPAs)	27,536,000	0	47%	
GreenPower	0	0	0%	
Climate Active precinct/building (voluntary renewables)	0	0	0%	
Precinct/Building (LRET)	0	0	0%	
Precinct/Building jurisdictional renewables (LGCs surrendered)	0	0	0%	
Electricity products (voluntary renewables)	0	0	0%	
Electricity products (LRET)	0	0	0%	
Electricity products jurisdictional renewables (LGCs surrendered)	0	0	0%	
Jurisdictional renewables (LGCs surrendered)	3,760,785	0	6%	
Jurisdictional renewables (LRET) (applied to ACT grid electricity)	953,767	0	2%	
Large Scale Renewable Energy Target (applied to grid electricity only)	8,418,185	0	14%	
Residual Electricity	9,182,072	8,768,879	0%	
Total renewable electricity (grid + non grid)	49,129,614	0	84%	
Total grid electricity	49,850,809	8,768,879	70%	
Total electricity (grid + non grid)	58,311,686	8,768,879	84%	
Percentage of residual electricity consumption under operational control	100%			
Residual electricity consumption under operational control	9,182,072	8,768,879		
Scope 2	8,108,843	7,743,945		
Scope 3 (includes T&D emissions from consumption under operational control)	1,073,229	1,024,934		
Residual electricity consumption not under operational control	0	0		
Scope 3	0	0		

Total renewables (grid and non-grid)	84.25%
Mandatory	16.07%
Voluntary	53.67%
Behind the meter	14.51%
Residual scope 2 emissions (t CO₂-e)	7,743.94
Residual scope 3 emissions (t CO₂-e)	1,024.93
Scope 2 emissions liability (adjusted for already offset carbon neutral electricity) (t CO₂-e)	7,743.94
Scope 3 emissions liability (adjusted for already offset carbon neutral electricity) (t CO₂-e)	1,024.93
Total emissions liability (t CO₂-e)	8,768.88
<i>Figures may not sum due to rounding. Renewable percentage can be above 100%</i>	

Location Based Approach Summary						
Location Based Approach	Activity Data (kWh) total	Under operational control			Not under operational control	
Percentage of grid electricity consumption under operational control	100%	(kWh)	Scope 2 Emissions (kg CO2-e)	Scope 3 Emissions (kg CO2-e)	(kWh)	Scope 3 Emissions (kg CO2-e)
ACT	5,073,229	5,073,229	3,703,457	304,394	0	0
NSW	18,736,496	18,736,496	13,677,642	1,124,190	0	0
SA	85,296	85,296	21,324	6,824	0	0
VIC	14,699,868	14,699,868	12,494,888	1,028,991	0	0
QLD	7,124,026	7,124,026	5,200,539	1,068,604	0	0
NT	0	0	0	0	0	0
WA	4,131,894	4,131,894	2,107,266	165,276	0	0
TAS	0	0	0	0	0	0
Grid electricity (scope 2 and 3)	49,850,809	49,850,809	37,205,116	3,698,278	0	0
ACT	1,034,437	1,034,437	0	0		
NSW	2,326,802	2,326,802	0	0		
SA	113,786	113,786	0	0		
VIC	4,137,119	4,137,119	0	0		
QLD	747,283	747,283	0	0		
NT	0	0	0	0		
WA	101,450	101,450	0	0		
TAS	0	0	0	0		
Non-grid electricity (behind the meter)	8,460,877	8,460,877	0	0		
Total electricity (grid + non grid)	58,311,686					

Residual scope 2 emissions (t CO2-e)	37,205.12
Residual scope 3 emissions (t CO2-e)	3,698.28
Scope 2 emissions liability (adjusted for already offset carbon neutral electricity) (t CO2-e)	37,205.12
Scope 3 emissions liability (adjusted for already offset carbon neutral electricity) (t CO2-e)	3,698.28
Total emissions liability (t CO2-e)	40,903.39

Operations in Climate Active buildings and precincts

Operations in Climate Active buildings and precincts	Electricity consumed in Climate Active certified building/precinct (kWh)	Emissions (kg CO ₂ -e)
N/A	0	0
<i>Climate Active carbon neutral electricity is not renewable electricity. These electricity emissions have been offset by another Climate Active member through their building or precinct certification. This electricity consumption is also included in the market based and location based summary tables. Any electricity that has been sourced as renewable electricity by the building/precinct under the market based method is outlined as such in the market based summary table.</i>		

Climate Active carbon neutral electricity products

Climate Active carbon neutral product used	Electricity claimed from Climate Active electricity products (kWh)	Emissions (kg CO ₂ -e)
N/A	0	0
<i>Climate Active carbon neutral electricity is not renewable electricity. These electricity emissions have been offset by another Climate Active member through their electricity product certification. This electricity consumption is also included in the market based and location-based summary tables. Any electricity that has been sourced as renewable electricity by the electricity product under the market-based method is outlined as such in the market based summary table.</i>		

APPENDIX C: INSIDE EMISSIONS BOUNDARY

Non-quantified emission sources

The following emissions sources have been assessed as relevant, are captured within the emissions boundary, but are not measured (quantified) in the carbon inventory. They have been non-quantified due to one of the following reasons:

1. **Immaterial** <1% for individual items and no more than 5% collectively.
2. **Cost effective** Quantification is not cost effective relative to the size of the emission but uplift applied.
3. **Data unavailable** Data is unavailable but uplift applied. A data management plan must be put in place to provide data within 5 years.
4. **Maintenance** Initial emissions non-quantified but repairs and replacements quantified.

All emissions sources have been quantified.

Data management plan for non-quantified sources

There are no non-quantified sources in the emissions boundary that require a data management plan.

APPENDIX D: OUTSIDE EMISSIONS BOUNDARY

Excluded emission sources

The below emission sources have been assessed as not relevant to an organisation's or precinct's operations and are outside of its emissions boundary. These emissions are not part of the carbon neutral claim. Emission sources considered for relevance must be included within the certification boundary if they meet two of the five relevance criteria. Those which only meet one condition of the relevance test can be excluded from the certification boundary.

Emissions tested for relevance are detailed below against each of the following criteria:

1. **Size** The emissions from a particular source are likely to be large relative to the organisation's electricity, stationary energy and fuel emissions.
2. **Influence** The responsible entity has the potential to influence the reduction of emissions from a particular source.
3. **Risk** The emissions from a particular source contribute to the organisation's greenhouse gas risk exposure.
4. **Stakeholders** Key stakeholders deem the emissions from a particular source to be relevant.
5. **Outsourcing** The emissions are from outsourced activities previously undertaken within the organisation's boundary, or from outsourced activities typically undertaken within the boundary for comparable organisations.

Excluded emissions sources summary

Emission sources tested for relevance		Size	Influence	Risk	Stakeholders	Outsourcing	Justification
Building embodied energy		Y	N	N	N	N	<p>Size: Although size is material for this emission source, the embodied emissions of ISPT's building portfolio are excluded in line with the GHG Protocol and Climate Active guidelines for Organisation carbon footprints allowing for capital infrastructure's exclusion.</p> <p>Influence: ISPT does not have the potential to influence the emissions from this source, including by shifting to a different lower-emissions supplier for our business.</p> <p>Risk: There are no relevant laws or regulations that apply to limit emissions specifically from this source, the source does not create supply chain risks, and it is unlikely to be of significant public interest.</p> <p>Stakeholders: Key stakeholders, including the public, are unlikely to consider this a relevant source of emissions for our business.</p> <p>Outsourcing: ISPT has not previously undertaken this activity within our emissions boundary and comparable organisations do not typically undertake this activity within their boundary.</p>
Maintenance and repairs		N	N	N	N	N	<p>Size: Emissions from maintenance and repairs are immaterial.</p> <p>Influence: ISPT does not have the potential to influence the emissions from this source, including by shifting to a different lower-emissions supplier for our business.</p> <p>Risk: There are no relevant laws or regulations that apply to limit emissions specifically from this source, the source does not create supply chain risks, and it is unlikely to be of significant public interest.</p> <p>Stakeholders: Key stakeholders, including the public, are unlikely to consider this a relevant source of emissions for our business.</p> <p>Outsourcing: ISPT has not previously undertaken this activity within our emissions boundary and comparable organisations do not typically undertake this activity within their boundary.</p>
Tenant electricity	operations -	Y	N	N	N	N	<p>Size: Although tenant electricity emissions is material, ISPT does not have operational control over these tenants.</p> <p>Influence: ISPT has very limited influence on tenants in choosing their electricity source.</p> <p>Risk: There are no relevant laws or regulations that apply to limit emissions specifically from this source, the source does not create supply chain risks, and it is unlikely to be of significant public interest.</p>

Cleaning Services

N N N N N

Stakeholders: Key stakeholders, including the public, are unlikely to consider this a relevant source of emissions for our business.

Outsourcing: ISPT has not previously undertaken this activity within our emissions boundary and comparable organisations do not typically undertake this activity within their boundary.

Size: Emissions from cleaning services are immaterial.

Risk: There are no relevant laws or regulations that apply to limit emissions specifically from this source, the source does not create supply chain risks, and it is unlikely to be of significant public interest.

Stakeholders: Key stakeholders, including the public, are unlikely to consider this a relevant source of emissions for our business.

Outsourcing: ISPT has not previously undertaken this activity within our emissions boundary and comparable organisations do not typically undertake this activity within their boundary.



APPENDIX E: PROPERTY LISTING¹

50 Lonsdale Street Property Trust

PROPERTY NAME	PROPERTY ADDRESS	STATE	SECTOR	LEGAL ENTITY NAME	ABN
50 Lonsdale Street	Melbourne VIC 3000	VIC	Commercial	ISPT 50 Lonsdale Street Property Trust	91 297 246 571

ISPT Core Fund

PROPERTY NAME	PROPERTY ADDRESS	STATE	SECTOR	LEGAL ENTITY NAME	ABN
1 Julius Avenue	North Ryde NSW 2113	NSW	Commercial	Industry Superannuation Property Trust No. 1	15 421 756 611
100 Pacific Highway	North Sydney NSW 2055	NSW	Commercial	Industry Superannuation Property Trust No. 1	15 421 756 611
100 St Georges Terrace	Perth WA 6000	WA	Commercial	Industry Superannuation Property Trust No. 2	70 014 228 200
155 Queen Street	Brisbane QLD 4000	QLD	Retail	Industry Superannuation Property Trust No. 2	70 014 228 200
170 Queen Street	Brisbane QLD 4000	QLD	Retail	Industry Superannuation Property Trust No. 2	70 014 228 200
18 Marcus Clarke Street	Canberra ACT 2600	ACT	Commercial	Industry Superannuation Property Trust No. 1	15 421 756 611
2 Constitution Avenue	Canberra ACT 2600	ACT	Commercial	Industry Superannuation Property Trust No. 1	15 421 756 611
2 Julius Avenue	North Ryde NSW 2113	NSW	Commercial	Industry Superannuation Property Trust No. 1	15 421 756 611
206 Bourke Street	206 Bourke Street, Melbourne VIC 3000	VIC	Retail	ISPT Retail Property Trust Midtown Plaza	77 108 963 039
255 Pitt Street	Sydney NSW 2000	NSW	Commercial	Industry Superannuation Property Trust No. 1	15 421 756 611
271 Spring Street	Melbourne VIC 3000	VIC	Commercial	Industry Superannuation Property Trust No. 1	15 421 756 611
283 Queen Street	Melbourne VIC 3000	VIC	Education	Industry Superannuation Property Trust No. 1	15 421 756 611
VU Tower	Melbourne VIC 3000	VIC	Education	Industry Superannuation Property Trust No. 1	15 421 756 611
295 Queen Street	Melbourne VIC 3000	VIC	Education	Industry Superannuation Property Trust No. 1	15 421 756 611

¹ Includes all properties under ISPT's operational control.

345 George Street	Sydney NSW 2000	NSW	Commercial	Industry Superannuation Property Trust No. 1	15 421 756 611
363 George Street	Sydney NSW 2000	NSW	Commercial	Industry Superannuation Property Trust No. 1	15 421 756 611
4 National Circuit	Barton ACT 2600	ACT	Commercial	Industry Superannuation Property Trust No. 1	15 421 756 611
44 Clunies Ross St	Prospect NSW 2148	NSW	Industrial	Industry Superannuation Property Trust No. 1	15 421 756 611
477 Pitt Street, Sydney	Sydney NSW 2000	NSW	Commercial	Industry Superannuation Property Trust No. 2	70 014 228 200
6 National Circuit	Barton ACT 2600	ACT	Commercial	Industry Superannuation Property Trust No. 1	15 421 756 611
7 London Circuit	Canberra ACT 2600	ACT	Commercial	Industry Superannuation Property Trust No. 1	15 421 756 611
713-721 Hay Street Mall	713-721 Hay St Mall PERTH WA 6000	WA	Retail	Industry Superannuation Property Trust No. 2	70 014 228 200
Barkly Square	90-106 Sydney Road, Brunswick VIC 3055	VIC	Retail	ISPT Retail Property Trust Brunswick	13 931 001 566
Barracks at Metroplex	1001 Boundary Road, Wacol, QLD 4076	QLD	Industrial	Industry Superannuation Property Trust No. 1	15 421 756 611
Bendigo Marketplace	37 Garsed St, Bendigo VIC 3550	VIC	Retail	ISPT Bendigo Marketplace Trust	21 101 068 970
Bessemer Business Park	13 Bessemer Street, Blacktown NSW 2148	NSW	Industrial	Industry Superannuation Property Trust No. 1	15 421 756 611
Casselden	2 Lonsdale Street, Melbourne VIC 3000	VIC	Commercial	Industry Superannuation Property Trust No. 1	15 421 756 611
Central Plaza	345 Queen Street, Brisbane QLD 4000	QLD	Commercial	Industry Superannuation Property Trust No. 1	15 421 756 611
Central West Industrial Park	9 Ashley Street West Footscray VIC	VIC	Industrial	ISPT Central West Industrial Park Trust	16 235 863 548
Central West Shopping Centre	cnr Ashley Street and South Road, Braybrook VIC 3019	VIC	Retail	ISPT Central West Shopping Centre Trust	20 794 944 532
Charles Sturt Industrial Estate	853 - 867 Port Rd, Woodville SA 5011	SA	Industrial	Industry Superannuation Property Trust No. 1	15 421 756 611
Defence Plaza	270 Pitt Street, Sydney NSW 2000	NSW	Commercial	Industry Superannuation Property Trust No. 1	15 421 756 611
Eastgate Bondi Junction	71-91 Spring Street, Bondi Junction NSW 2022	NSW	Retail	ISPT Retail Property Trust Eastgate No. 1	12 457 326 824
Enex	683 Hay Street Mall, Perth WA 6000	WA	Retail	Industry Superannuation Property Trust No. 2	70 014 228 200
Forrest Chase	Murray Street, Perth WA 6000	WA	Retail	Industry Superannuation Property Trust No. 2	70 014 228 200
Green Square North Tower	515 St Pauls Terrace, Fortitude Valley QLD 4006	QLD	Commercial	Industry Superannuation Property Trust No. 1	15 421 756 611
Interchange Industrial Estate	Bruce Highway, Narangba QLD 4504	QLD	Industrial	Industry Superannuation Property Trust No. 1	15 421 756 611

John McEwen House		7 National Circuit, Barton, ACT 2600	ACT	Commercial	Industry Superannuation Property Trust No. 1	15 421 756 611
Karingal Hub		330 Cranbourne Rd, Frankston VIC 3199	VIC	Retail	ISPT Karingal Shopping Centre Trust	14 113 009 273
Kookaburra Estate	Logistics	Lot 11 Kurrajong Road, Prestons NSW	NSW	Industrial	Industry Superannuation Property Trust No. 1	15 421 756 611
Melbourne's GPO		cnr Bourke and Elizabeth Streets, Melbourne VIC 3000	VIC	Retail	Industry Superannuation Property Trust No. 2	70 014 228 200
Midtown Plaza		246 Bourke Street, Melbourne VIC 3000	VIC	Retail	ISPT Retail Property Trust Midtown Plaza	77 108 963 039
One National Circuit		1 National Circuit, Barton ACT 2600	ACT	Commercial	Industry Superannuation Property Trust No. 1	15 421 756 611
Parklands Estate		South Street, Rydalmere NSW 2116	NSW	Industrial	Industry Superannuation Property Trust No. 1	15 421 756 611
Portlink Logistics Estate - Lots 6 to 11		6-11 Horsburgh Drive, Altona North VIC 3025	VIC	Industrial	ISPT Horsburgh Drive Estate Trust No.4	47 651 299 733
Richmond Marketplace		March Street, Richmond NSW 2323	NSW	Retail	ISPT Retail Property Trust	38 757 243 503
RM Hope Building		Robert Marsden Hope Building, 2 National Circuit, Barton ACT 2600	ACT	Commercial	Industry Superannuation Property Trust No. 1	15 421 756 611
Robert Garran		3-5 National Circuit, Barton ACT 2600	ACT	Commercial	Industry Superannuation Property Trust No. 1	15 421 756 611
Southgate Centre	Shopping	cnr Princes Hwy and Port Hacking Rd, Sylvania NSW 2224	NSW	Retail	ISPT Retail Property Trust	38 757 243 503
The Barrington		10 Smith Street, Parramatta NSW 2124	NSW	Commercial	Industry Superannuation Property Trust No. 1	15 421 756 611
The Regent		150 Elizabeth Street, Brisbane QLD 4000	QLD	Commercial	Industry Superannuation Property Trust No. 2	70 014 228 200
The Strand Melbourne		250 Elizabeth Street, Melbourne VIC 3000	VIC	Retail	Industry Superannuation Property Trust No. 2	70 014 228 200
Wagga Marketplace	Wagga	cnr Baylis and Forsyth Streets, Wagga Wagga NSW 2650	NSW	Retail	ISPT Retail Property Trust	38 757 243 503
Waurm Ponds Centre	Shopping	173-199 Pioneer Road, Waurm Ponds VIC 3216	VIC	Retail	ISPT Waurm Ponds Trust	29 135 847 280
Wintergarden		171-209 Queen Street, Brisbane QLD 4000	QLD	Retail	Industry Superannuation Property Trust No. 2	70 014 228 200
World Square		644 George Street, Sydney NSW 2000	NSW	Retail	Industry Superannuation Property Trust No. 2	70 014 228 200

ISPT RETAIL AUSTRALIA PROPERTY TRUST (IRAPT)

PROPERTY NAME	PROPERTY ADDRESS	STATE	SECTOR	LEGAL ENTITY NAME	ABN
19th Avenue Shopping Centre	Cnr 19th Avenue and Angelica St, Elanora QLD 4221	QLD	Retail	ISPT Retail Australia Property Trust (19 Ave QLD)	28 449 659 155
791 Bourke Road	791 Burke Road, Camberwell VIC 3124	VIC	Retail	ISPT Retail Australia Property Trust (Camberwell Vic)	72 921 425 034
Banksia Grove Village	cnr Joondalup Drive and Joseph Banks Boulevard, Banksia Grove WA 6031	WA	Retail	ISPT Retail Australia Property Trust (Banksia Grove WA)	66 353 688 592
Beeliar Village	8 Durnin Avenue, Beeliar, WA 6164	WA	Retail	ISPT Retail Australia Property Trust (Beeliar WA)	54 806 337 971
Bracken Ridge Plaza	cnr Telegraph and Norris Roads, Bracken Ridge QLD 4017	QLD	Retail	ISPT Retail Australia Property Trust (Bracken Ridge Plaza QLD)	45 737 124 559
Brighton Village	6 Kingsbridge Boulevard, Butler, WA 6036	WA	Retail	ISPT Retail Australia Property Trust (Brighton WA)	18 915 327 743
Caloundra Village	1 Ormuz Avenue Caloundra QLD 4551	QLD	Retail	ISPT Retail Australia Property Trust (Caloundra Village QLD)	88 282 358 287
Camberwell Place	cnr Burke Road and Camberwell Junction, Camberwell VIC 3124	VIC	Retail	ISPT Retail Australia Property Trust (Camberwell Vic)	72 921 425 034
Coles Mill Park Lakes	The Lakes Boulevard and Gordons Road, South Morang VIC 3752	VIC	Retail	ISPT Retail Australia Property Trust (Mill Park Lakes, Vic)	63 117 047 705
Coles Port Macquarie	Gordon Street, Port Macquarie NSW 2444	NSW	Retail	ISPT Retail Australia Property Trust (Port Macquarie NSW)	19 372 860 504
Coles Southgate	4-10 Kathleen Street, South Tamworth NSW 2340	NSW	Retail	ISPT Retail Australia Property Trust (Tamworth South NSW)	23 115 597 997
Coolum Village	19 Margaret Street, Coolum QLD 4593	QLD	Retail	ISPT Retail Australia Property Trust (Coolum QLD)	36 948 072 797
Coolum Park Shopping Centre	South Coolum Road, Coolum Beach, QLD 4573	QLD	Retail	ISPT Retail Australia Property Trust (Coolum Park QLD)	81 144 763 518
Dee Why Grand	15-19 Pacific Parade, Dee Why NSW 2099	NSW	Retail	ISPT Retail Australia Property Trust (Dee Why Grand NSW)	68 796 474 891
Deeragun Village	Bruce Highway, Deeragun QLD 4818	QLD	Retail	ISPT Retail Australia Property Trust (Deeragun QLD)	50 705 241 475
Fletcher Village	cnr Minmi Road and Churnwood Drive, Fletcher NSW 2287	NSW	Retail	ISPT Retail Australia Property Trust (Fletcher NSW)	78 239 325 632
Gungahlin Village	Hibberson Street, Gungahlin ACT 2912	ACT	Retail	ISPT Retail Australia Property Trust (Gungahlin ACT)	92 989 955 449
Katoomba Village	Parke Street, Katoomba NSW 2780	NSW	Retail	ISPT Retail Australia Property Trust (Katoomba NSW)	54 331 854 092

Kellyville Village	90 Wrights Road, Kellyville NSW 2155	NSW	Retail	ISPT Retail Australia Property Trust (Kellyville NSW)	56 514 191 662
Kincumber Village	cnr Avoca Drive and Bungoon Road, Kincumber NSW 2251	NSW	Retail	ISPT Retail Australia Property Trust (Kincumber NSW)	14 621 656 495
Lakelands	Mandurah Road, Lakelands WA	WA	Retail	ISPT Retail Australia Property Trust (Lakelands WA)	82 126 151 893
Lilydale Village	51-59 Anderson Street, Lilydale VIC 3140	VIC	Retail	ISPT Retail Australia Property Trust (Lilydale VIC)	51 576 514 250
Mango Hill Market Place	Cnr Anzac Ave and Halpine Drive, Mango Hill	QLD	Retail	ISPT Retail Australia Property Trust (Mango Hill QLD)	70 177 395 642
Northlakes Shopping Centre	Pacific Highway, San Remo NSW 2262	NSW	Retail	ISPT Retail Australia Property Trust (Northlakes NSW)	67 324 799 568
Nundah Village	89 Buckland Road, Nundah QLD 4012	QLD	Retail	ISPT Retail Australia Property Trust (Nundah QLD)	14 380 753 116
Showgrounds Village	320-380 Epsom Road, Flemington VIC 3031	VIC	Retail	ISPT Retail Australia Property Trust (Showgrounds VIC)	42 465 713 558
Silkstone Village	cnr Blackstone and Grange Roads Booval Qld 4304	QLD	Retail	ISPT Retail Australia Property Trust (Silkstone QLD)	71 205 851 891
St Clair Village	Cheltenham Parade, Cheltenham SA 5014	SA	Retail	ISPT Retail Australia Property Trust (St Clair SA)	50 196 787 654
Tarneit West Village	540 Tarneit Road, Tarneit West VIC 3029	VIC	Retail	ISPT Retail Australia Property Trust (Tarneit West VIC)	80 743 512 328
Taylors Hill Village	cnr Hume Drive and Gourlay Road, Taylors Hill VIC 3037	VIC	Retail	ISPT Retail Australia Property Trust (Taylors Hill VIC)	90 736 593 164
The Ponds Shopping Centre	cnr The Ponds Boulevard and Riverbank Drive, Kellyville NSW 2769	NSW	Retail	ISPT Retail Australia Property Trust (The Ponds NSW)	57 221 167 913
Thuringowa Village	cnr Dalrymple Road and Thuringowa Drive, Thuringowa QLD 4817	QLD	Retail	ISPT Retail Australia Property Trust (Thuringowa QLD)	65 202 643 125
Warners Bay Village	32 John Street, Warners Bay NSW 2282	NSW	Retail	ISPT Retail Australia Property Trust (Warners Bay Village NSW)	35 610 833 839
Winmalee Village	White Cross Road, Winmalee NSW 2777	NSW	Retail	ISPT Retail Australia Property Trust (Winmalee NSW)	68 288 532 736

Corporate Tenancies

PROPERTY NAME	PROPERTY ADDRESS	STATE	SECTOR	LEGAL ENTITY NAME	ABN
ISPT Corporate Brisbane Tenancy	Level 5, 100 Creek St, Brisbane QLD 4000	QLD	Corporate	ISPT Pty Ltd	064 041 283
ISPT Corporate Melbourne Tenancy	Level 11, 8 Exhibition St, Melbourne VIC 3000	VIC	Corporate	ISPT Pty Ltd	064 041 283
ISPT Corporate Sydney Tenancy	Level 6, 24 York St, Sydney NSW 2000	NSW	Corporate	ISPT Pty Ltd	064 041 283



An Australian Government Initiative

