



# **PUBLIC DISCLOSURE STATEMENT**

**NATION PARTNERS PTY LTD**

**ORGANISATION CERTIFICATION  
FY2022–23**


Australian Government  
**Climate Active**  
**Public Disclosure Statement**

nation  
partners



An Australian Government Initiative



NAME OF CERTIFIED ENTITY	Nation Partners Pty Ltd
REPORTING PERIOD	1 July 2022 – 30 June 2023 Arrears report
DECLARATION	<p><i>To the best of my knowledge, the information provided in this public disclosure statement is true and correct and meets the requirements of the Climate Active Carbon Neutral Standard.</i></p>  <p>Matthew Nation Founder &amp; Director 15/04/2024</p>



**Australian Government**  
**Department of Climate Change, Energy,**  
**the Environment and Water**

Public Disclosure Statement documents are prepared by the submitting organisation. The material in the Public Disclosure Statement document represents the views of the organisation and do not necessarily reflect the views of the Commonwealth. The Commonwealth does not guarantee the accuracy of the contents of the Public Disclosure Statement document and disclaims liability for any loss arising from the use of the document for any purpose.

Version August 2023.

# 1.CERTIFICATION SUMMARY

TOTAL EMISSIONS OFFSET	119.98 tCO <sub>2</sub> -e
CARBON OFFSETS USED	100% ACCUs
RENEWABLE ELECTRICITY	64%
CARBON ACCOUNT	Prepared by: Pangolin Associates
TECHNICAL ASSESSMENT	12/0/4/2024 Pangolin Associates Next technical assessment due: FY 2026 report

## Contents

1. Certification summary.....	3
2. Certification information .....	4
3. Emissions boundary .....	5
4. Emissions reductions.....	7
5. Emissions summary.....	10
6. Carbon offsets .....	12
7. Renewable Energy Certificate (REC) Summary .....	14
Appendix A: Electricity summary .....	15
Appendix B: Inside emissions boundary .....	18
Appendix C: Outside emissions boundary .....	19

## 2. CERTIFICATION INFORMATION

### Description of organisation certification

This organization certification is for the Australian business operations of Nation Partners Pty Ltd (Nation Partners), ABN 96 166 861 892. This Public Disclosure Statement includes information for FY2022–23 reporting period.

### Organisation description

Nation Partners Pty Ltd (Nation Partners) (ABN: 96 166 861 892) was founded in 2013 with the intent of creating a purpose-driven business with a strong environmental and social conscience. The operational boundary has been defined based on an operational control test, in accordance with the principles of the National Greenhouse and Energy Reporting Act 2007. We have three offices across Australia and over 50 full-time equivalent staff. Our office locations are detailed below:

- **Melbourne** - Level 3, 75-77 Flinders Lane, Melbourne, VIC, 3000
- **Sydney** - Suite 306 and 307, 50 Holt Street Sydney, NSW, 2010
- **Canberra** - Level 2/7 Neptune Street, Phillip, ACT, 2006

Nation Partners provides an array of consultancy services encompassing contaminated land advisory, sustainable development, climate change adaptation and resilience, greenhouse gas mitigation, environmental protection, planning and approvals, investment, and business case advisory, as well as stakeholder relations and communications.

Nation Partners is a certified B Corporation, and we are committed to directing 4% of all profits to social investment initiatives. We are also an employee-owned business with distributed leadership (see *Figure 1* for organizational structure overview) meaning we all have the ability to control our destiny and ensure our collective energy (and profits) are directed towards solving some of the planet's most pressing issues.

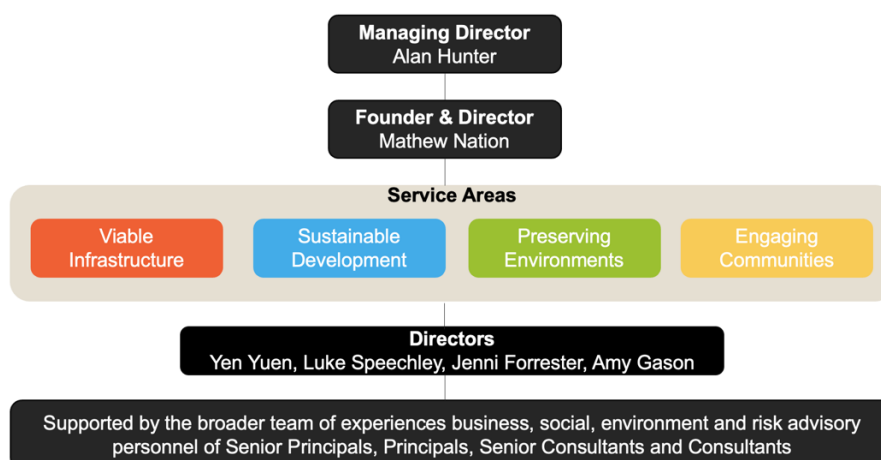


Figure 1. Nation Partners Organisational Structure

## 3.EMISSIONS BOUNDARY

### Inside the emissions boundary

All emission sources listed in the emissions boundary are part of the carbon neutral claim.

**Quantified emissions** have been assessed as relevant and are quantified in the carbon inventory. This may include emissions that are not identified as arising due to the operations of the certified entity, however are **optionally included**.

**Non-quantified emissions** have been assessed as relevant and are captured within the emissions boundary but are not measured (quantified) in the carbon inventory. All material emissions are accounted for through an uplift factor. Further detail is available at Appendix C.

### Outside the emissions boundary

**Excluded emissions** are those that have been assessed as not relevant to an organization's operations and are outside of its emissions boundary or are outside of the scope of the certification. These emissions are not part of the carbon neutral claim. Further detail is available at Appendix D.

Inside emissions boundary		Outside emission boundary
<u>Quantified</u>	<u>Non-quantified</u>	<u>Excluded</u>
Accommodation and facilities	N/A	N/A
Cleaning and chemicals		
Climate Active carbon neutral products and services		
Construction materials and services		
Electricity		
Food		
ICT services and equipment		
Office equipment and supplies		
Products		
Professional services		
Refrigerants		
Stationary energy (gaseous fuels)		
Transport (air)		
Transport (land and sea)		
Waste		
Water		
Working from home		
	<u>Optionally included</u>	
	N/A	

## 4. EMISSIONS REDUCTIONS

### Emissions reduction strategy

Nation Partners is committed to eliminating all Scope 1 and 2 emissions by 2025 and reducing Scope 3 emissions by 50% by 2030, on a baseline year of Financial Year (FY) 2021–22.

Approximately 68% of Nation Partners' emissions profile is generated from Scope 3 emissions (using the location-based method). As such, our Emission Reduction Strategy is predominately focused on reducing these indirect (upstream and downstream) emissions in our value chain.

<i>Emissions Reduction Strategy</i>	<b>Emissions Source</b>	<b>Timeframe / deadline for reduction</b>	<b>KPIs &amp; Measurement Approach</b>
<b>Goal 1: Eliminate Scope 1 and 2 emissions by 2025</b>			
<b>Action 1.1</b> Eliminate transport emissions (land) by prioritizing low-carbon and carbon neutral modes of transport – cycling, walking, public transport, electric vehicles, where feasible.	Scope 1	Q3, FY2024	Measure reduction in emissions following implementation of mandate compared to previous / BAU business travel.
<b>Action 1.2</b> Eliminate tenancy electricity emissions through lobbying buildings to convert to GreenPower for communal areas.	Scope 2	Q3, FY2024	Measure reduction in emissions after sourcing carbon neutral electricity.
<b>Action 1.3</b> Eliminate refrigerant emissions through regular preventative maintenance	Scope 1	Q4, FY2024	Measure reduction in emissions from period prior to regular maintenance compared to after regular maintenance.
<b>Goal 2: Reduce Scope 3 emissions by 50% by 2030</b>			
<b>Action 2.1</b> Eliminate transport emissions (air) by mandating that emissions offsets are purchased for each flight at the point of transaction	Scope 3	FY2024	Measure reduction in emissions following implementation of mandate compared to previous / BAU business travel.

<i>Emissions Reduction Strategy</i>	<b>Emissions Source</b>	<b>Timeframe / deadline for reduction</b>	<b>KPIs &amp; Measurement Approach</b>
<b>Action 2.2</b> Encourage staff to purchase Greenpower and carbon neutral gas (where applicable) for their homes to reduce emissions associated with staff working from home.	Scope 3	FY2024	Monitor staff uptake of GreenPower and track emissions savings.
<b>Action 2.3</b> Update procurement / supplier policy to preference carbon neutral suppliers	Scope 3	FY2024	Compare reduction figures from before and after this action is implemented.
<b>Action 2.4</b> Encourage professional service providers (e.g. IT service, legal, and accounting) to become Climate Active carbon neutral certified for the services they provide.	Scope 3	FY2026	Survey suppliers to track number of services provided that become carbon neutral
<b>Action 2.5</b> Implement sustainable travel policy that preferences carbon neutral accommodation and use of electric vehicles (where feasible) for travel purposes.	Scope 3	Currently underway (FY2023)	Monitor trips taken and corresponding emissions compared with previous / BAU business travel.



## Emissions reduction actions

Nation Partners is dedicated to continually reducing our emissions to ensure that we can meet our Emissions Reduction Strategy commitments and lower our environmental impact. A summary of the actions we have taken across the past financial year to lower our emissions profile are detailed below.

- In pursuit of Action 1.2, we engaged in conversations with our landlord at the Alley (75-77 Flinders Lane, Melbourne, VIC) about the merits of transitioning to 100% GreenPower for electricity needs in communal areas. Whilst our conversations are ongoing, we are dedicated to eliminating these Scope 2 emissions by June 2024.
- In pursuit of Action 2.1, Nation Partners now requires all staff to purchase offsets for every flight taken, at the point of transaction, to offset emissions associated with the air travel.
- In support of Action 2.1 and 2.5, Nation Partners has engaged ethical travel consultants, Reho Travel, for all travel needs. Staff are able to book flights, accommodation and car hire through Reho Travel, enabling easy tracking and monitoring of all carbon emissions associated with travel. This also enables us to track the offsets purchased for each flight and recommend more sustainable accommodation options.

Nation Partners is steadfast in its commitment to pursuing the remaining actions on our Emissions Reduction Strategy and will continue to advocate for more sustainable solutions and decisions amongst ourselves, our suppliers, and our clients.

## 5.EMISSIONS SUMMARY

### Emissions over time

Emissions since base year		
		Total tCO <sub>2</sub> -e (without uplift)
Base year:	2021-22	79.57
Year 2:	2022-23	119.98

### Significant changes in emissions

Significant changes in emissions			
Emission source	Previous year emissions (t CO <sub>2</sub> -e)	Current year emissions (t CO <sub>2</sub> -e)	Reason for change
Computer and technical services	25.60	30.12	Nation Partners has grown since our baseline reporting year of FY2021/22. In the previous reporting year, we had 45 FTE. Nation Partners now has close to 57 FTE. This has required additional computer and technical services to support these staff, including the purchase of additional computer equipment (i.e. laptops and tablets) and expansion of hardware in our meeting rooms and boardrooms in Melbourne and Sydney.
Working from home	16.03	13.17	Our baseline year of FY2021/22 was during significant periods of work from home due to COVID-19 restrictions. Since then, staff have transitioned back to working from our office spaces more regularly meaning there has been less time spent working from home.

### Use of Climate Active carbon neutral products, services, buildings, or precincts

Certified brand name	Product/Service/Building/Precinct used
Qantas	Business Flights
Pangolin Associates	Consulting Services
Holt & Hart	50 Holt Street, Surry Hills, NSW, 2010 (Building)

## Emissions summary

The electricity summary is available in the Appendix B. Electricity emissions were calculated using a market-based approach.

Emission category	Scope 1 emissions (tCO <sub>2</sub> -e)	Scope 2 emissions (tCO <sub>2</sub> -e)	Scope 3 emissions (tCO <sub>2</sub> -e)	Total emissions (t CO <sub>2</sub> -e)
Accommodation and facilities	0.00	0.00	2.63	2.63
Cleaning and Chemicals	0.00	0.00	1.22	1.22
Climate Active carbon neutral products and services	0.00	0.00	0.00	0.00
Construction Materials and Services	0.00	0.00	17.62	17.62
Electricity	0.00	0.00	0.00	0.00
Food	0.00	0.00	1.59	1.59
ICT services and equipment	0.00	0.00	38.41	38.41
Office equipment & supplies	0.00	0.00	2.92	2.92
Products	0.00	0.00	0.23	0.23
Professional Services	0.00	0.00	21.69	21.69
Refrigerants	1.22	0.00	0.00	1.22
Stationary Energy (gaseous fuels)	0.00	0.00	0.00	0.00
Transport (Air)	0.00	0.00	2.75	2.75
Transport (Land and Sea)	1.13	0.00	9.83	10.96
Waste	0.00	0.00	5.16	5.16
Water	0.00	0.00	0.40	0.40
Working from home	0.00	0.00	13.17	13.17
<b>Total emissions (tCO<sub>2</sub>-e)</b>	<b>2.35</b>	<b>0.00</b>	<b>117.63</b>	<b>119.98</b>

## Uplift factors

N/A

## 6. CARBON OFFSETS

### Eligible offsets retirement summary

Offsets retired for Climate Active certification

Type of offset units	Eligible quantity (used for this reporting period)	Percentage of total
Australian Carbon Credit Units (ACCUs)	120	100%

Project description	Type of offset units	Registry	Date retired	Serial number (and hyperlink to registry transaction record)	Vintage	Stapled quantity	Eligible quantity retired (tCO <sub>2</sub> -e)	Eligible quantity used for previous reporting periods	Eligible quantity banked for future reporting periods	Eligible quantity used for this reporting period	Percentage of total (%)
Karlantijpa North Savanna Burning project	ACCU	ANREU	8 Apr 2024	8,333,308,549 - 8,333,308,668	2021-22	-	120	0	0	120	100%
Total eligible offsets retired and used for this report										120	
Total eligible offsets retired this report and banked for use in future reports									0		

## Co-benefits



**Australian Government**  
Clean Energy Regulator

# Australian National Registry of Emissions Units

[ANREU Home](#)
[Account Holders](#)
[Accounts](#)
[Unit Position Summary](#)
[Projects](#)
[Transaction Log](#)
[CER Notifications](#)
[Public Reports](#)
[My Profile](#)

Transaction Details

Transaction details appear below.

Transaction ID

AU33115

Current Status

Completed (4)

Status Date

08/04/2024 15:04:45 (AEST)

08/04/2024 05:04:45 (GMT)

Transaction Type

Cancellation (4)

Transaction Initiator

Foley, Rowan Paul Bulmer

Transaction Approver

Foley, Rowan Paul Bulmer

Comment

Retirement undertaken on behalf of Nation Partners to achieve carbon neutral status for FY22-23 in the Climate Active scheme.

Transferring Account

Account Number

AU-2798

Account Name

Aboriginal Carbon Fund Limited

Account Holder

Aboriginal Carbon Fund Limited

Acquiring Account

Account Number

AU-1068

Account Name

Australia Voluntary Cancellation Account

Account Holder

Commonwealth of Australia

Transaction Status History

Party	Type	Transaction Type	Original CP	Current CP	ERF Project ID	NGER Facility ID	NGER Facility Name	Safeguard	Kyoto Project #	Vintage	Expiry Date	Serial Range	Quantity
AU	KACCU	Voluntary ACCU Cancellation			ERF104800					2021-22		8,333,308,549 - 8,333,308,668	120

[Change Password](#)
[Contact Us](#)
[Log Out](#)
[Help](#)

Logged in as: Rowan Foley / Industry User

## 7. RENEWABLE ENERGY CERTIFICATE (REC) SUMMARY

### Renewable Energy Certificate (REC) summary

N/A

## APPENDIX A: ELECTRICITY SUMMARY

There are two international best-practice methods for calculating electricity emissions – the location-based method and the market-based method. Reporting electricity emissions under both methods is called dual reporting.

Dual reporting of electricity emissions is useful, as it provides different perspectives of the emissions associated with a business's electricity usage.

### **Location-based method:**

The location-based method provides a picture of a business's electricity emissions in the context of its location, and the emissions intensity of the electricity grid it relies on. It reflects the average emissions intensity of the electricity grid in the location (State) in which energy consumption occurs. The location-based method does not allow for any claims of renewable electricity from grid-imported electricity usage.

### **Market-based method:**

The market-based method provides a picture of a business's electricity emissions in the context of its renewable energy investments. It reflects the emissions intensity of different electricity products, markets, and investments. It uses a residual mix factor (RMF) to allow for unique claims on the zero emissions attribute of renewables without double-counting.

For this certification, electricity emissions have been set by using the **market-based approach**.

Market-based approach summary			
Market-based approach	Activity Data (kWh)	Emissions (kg CO <sub>2</sub> -e)	Renewable percentage of total
Behind the meter consumption of electricity generated	0	0	0%
<b>Total non-grid electricity</b>	<b>0</b>	<b>0</b>	<b>0%</b>
LGC Purchased and retired (kWh) (including PPAs)	0	0	0%
GreenPower	19,103	0	48%
Climate Active precinct/building (voluntary renewables)	0	0	0%
Precinct/Building (LRET)	0	0	0%
Precinct/Building jurisdictional renewables (LGCS surrendered)	0	0	0%
Electricity products (voluntary renewables)	0	0	0%
Electricity products (LRET)	0	0	0%
Electricity products jurisdictional renewables (LGCs surrendered)	0	0	0%
Jurisdictional renewables (LGCs surrendered)	1,822	0	5%
Jurisdictional renewables (LRET) (applied to ACT grid electricity)	462	0	1%
Large Scale Renewable Energy Target (applied to grid electricity only)	4,228	0	11%
Residual Electricity	14,369	13,722	0%
<b>Total renewable electricity (grid + non grid)</b>	<b>25,615</b>	<b>0</b>	<b>64%</b>
<b>Total grid electricity</b>	<b>39,984</b>	<b>13,722</b>	<b>64%</b>
<b>Total electricity (grid + non grid)</b>	<b>39,984</b>	<b>13,722</b>	<b>64%</b>
Percentage of residual electricity consumption under operational control	0%		
<b>Residual electricity consumption under operational control</b>	<b>0</b>	<b>0</b>	
Scope 2	0	0	
Scope 3 (includes T&D emissions from consumption under operational control)	0	0	
<b>Residual electricity consumption not under operational control</b>	<b>14,369</b>	<b>13,722</b>	
Scope 3	14,369	13,722	

<b>Total renewables (grid and non-grid)</b>	<b>64.06%</b>
<b>Mandatory</b>	<b>11.73%</b>
<b>Voluntary</b>	<b>52.33%</b>
<b>Behind the meter</b>	<b>0.00%</b>
<b>Residual scope 2 emissions (t CO<sub>2</sub>-e)</b>	<b>0.00</b>
<b>Residual scope 3 emissions (t CO<sub>2</sub>-e)</b>	<b>13.72</b>
<b>Scope 2 emissions liability (adjusted for already offset carbon neutral electricity) (t CO<sub>2</sub>-e)</b>	<b>0.00</b>
<b>Scope 3 emissions liability (adjusted for already offset carbon neutral electricity) (t CO<sub>2</sub>-e)</b>	<b>0.00</b>
<b>Total emissions liability (t CO<sub>2</sub>-e)</b>	<b>0.00</b>

Figures may not sum due to rounding. Renewable percentage can be above 100%



Location-based approach summary						
Location-based approach	Activity Data (kWh) total	Under operational control			Not under operational control	
Percentage of grid electricity consumption under operational control	68%	(kWh)	Scope 2 Emissions (kg CO <sub>2</sub> -e)	Scope 3 Emissions (kg CO <sub>2</sub> -e)	(kWh)	Scope 3 Emissions (kg CO <sub>2</sub> -e)
ACT	2,458	1,664	1,215	100	794	627
NSW	20,808	14,085	10,282	845	6,723	5,311
SA	0	0	0	0	0	0
VIC	16,718	11,317	9,619	792	5,401	4,969
QLD	0	0	0	0	0	0
NT	0	0	0	0	0	0
WA	0	0	0	0	0	0
TAS	0	0	0	0	0	0
<b>Grid electricity (scope 2 and 3)</b>	<b>39,984</b>	<b>27,066</b>	<b>21,116</b>	<b>1,737</b>	<b>12,918</b>	<b>10,907</b>
ACT	0	0	0	0		
NSW	0	0	0	0		
SA	0	0	0	0		
VIC	0	0	0	0		
QLD	0	0	0	0		
NT	0	0	0	0		
WA	0	0	0	0		
TAS	0	0	0	0		
<b>Non-grid electricity (behind the meter)</b>	<b>0</b>	<b>0</b>	<b>0</b>	<b>0</b>		
<b>Total electricity (grid + non grid)</b>	<b>39,984</b>					

Residual scope 2 emissions (t CO <sub>2</sub> -e)	21.12
Residual scope 3 emissions (t CO <sub>2</sub> -e)	12.64
Scope 2 emissions liability (adjusted for already offset carbon neutral electricity) (t CO <sub>2</sub> -e)	13.69
Scope 3 emissions liability (adjusted for already offset carbon neutral electricity) (t CO <sub>2</sub> -e)	8.20
<b>Total emissions liability</b>	<b>21.88</b>

## Operations in Climate Active buildings and precincts

Operations in Climate Active buildings and precincts	Electricity consumed in Climate Active certified building/precinct (kWh)	Emissions (kg CO <sub>2</sub> -e)
Holt & Hart - 50 Holt Street, Surry Hills	15,036	0
Climate Active carbon neutral electricity is not renewable electricity. These electricity emissions have been offset by another Climate Active member through their building or precinct certification. This electricity consumption is also included in the market based and location-based summary tables. Any electricity that has been sourced as renewable electricity by the building/precinct under the market-based method is outlined as such in the market-based summary table.		

## APPENDIX B: INSIDE EMISSIONS BOUNDARY

The following emissions sources have been assessed as relevant, are captured within the emissions boundary, but are not measured (quantified) in the carbon inventory. They have been non-quantified due to one of the following reasons:

1. **Immaterial** <1% for individual items and no more than 5% collectively
2. **Cost effective** Quantification is not cost effective relative to the size of the emission but uplift applied.
3. **Data unavailable** Data is unavailable, but uplift applied. A data management plan must be put in place to provide data within 5 years.
4. **Maintenance** Initial emissions non-quantified but repairs and replacements quantified.

Relevant non-quantified emission sources	Justification reason
N/A	N/A

### Data management plan for non-quantified sources

There are no non-quantified sources in the emission boundary that require a data management plan.

## APPENDIX C: OUTSIDE EMISSIONS BOUNDARY

### Excluded emission sources

The below emission sources have been assessed as not relevant to this organisation's operations and are outside of its emissions boundary. These emissions are not part of the carbon neutral claim. Emission sources considered for relevance must be included within the certification boundary if they meet two of the five relevance criteria. Those which only meet one condition of the relevance test can be excluded from the certification boundary.

Emissions tested for relevance are detailed below against each of the following criteria:

1. **Size** The emissions from a particular source are likely to be large relative to the organisation's electricity, stationary energy, and fuel emissions.
2. **Influence** The responsible entity has the potential to influence the reduction of emissions from a particular source.
3. **Risk** The emissions from a particular source contribute to the organisation's greenhouse gas risk exposure.
4. **Stakeholders** Key stakeholders deem the emissions from a particular source are relevant.
5. **Outsourcing** The emissions are from outsourced activities previously undertaken within the organisation's boundary, or from outsourced activities typically undertaken within the boundary for comparable organisations.

### Excluded emissions sources summary

N/A

.



An Australian Government Initiative

