



PUBLIC DISCLOSURE STATEMENT

**FABLE HOLDINGS PTY LTD (TRADING AS
FABLE FOOD PTY LTD)
ORGANISATION CERTIFICATION
FY2023-24**

Australian Government


Climate Active Public Disclosure Statement

fable



An Australian Government Initiative



NAME OF CERTIFIED ENTIT	Fable Holdings Pty Ltd (Trading as Fable Food Pty Ltd)						
REPORTING PERIOD	Financial Year 1 July 2023 – 30 June 2024 [Arrears report]						
DECLARATION	<p><i>To the best of my knowledge, the information provided in this public disclosure statement is true and correct and meets the requirements of the Climate Active Carbon Neutral Standard.</i></p> <p><i>Signature here</i></p>  <table><tr><td>Name of signatory</td><td>CHRISTOPHER MCCALLUM</td></tr><tr><td>Position of signatory</td><td>COO CFO</td></tr><tr><td>Date</td><td>24 JUL 2025</td></tr></table>	Name of signatory	CHRISTOPHER MCCALLUM	Position of signatory	COO CFO	Date	24 JUL 2025
Name of signatory	CHRISTOPHER MCCALLUM						
Position of signatory	COO CFO						
Date	24 JUL 2025						



Australian Government

Department of Climate Change, Energy,
the Environment and Water

Public Disclosure Statement documents are prepared by the submitting organisation. The material in the Public Disclosure Statement document represents the views of the organisation and do not necessarily reflect the views of the Commonwealth. The Commonwealth does not guarantee the accuracy of the contents of the Public Disclosure Statement document and disclaims liability for any loss arising from the use of the document for any purpose.

Version 9.

1.CERTIFICATION SUMMARY

TOTAL EMISSIONS OFFSET	Offset by organisation: 1,765 tCO ₂ -e (includes product offsets)
CARBON OFFSETS USED	100% CERs
RENEWABLE ELECTRICITY	N/A
CARBON ACCOUNT	Prepared by: Pathzero
TECHNICAL ASSESSMENT	16/01/2024 Pathzero Next technical assessment due: FY 2026

Contents

1. Certification summary	3
2. Certification information.....	4
3. Emissions reductions.....	7
4. Emissions summary	8
5. Carbon offsets	10
7. Renewable Energy Certificate (REC) Summary	12
Appendix A: Additional Information	13
Appendix B: Electricity summary.....	14
Appendix C: Inside emissions boundary	15
Appendix D: Outside emissions boundary	16

2.CERTIFICATION INFORMATION

Description of organisation certification

This organisation certification is for the business operations of Fable Holdings Pty Ltd (trading as Fable Food Pty Ltd), ABN 32 636 627 542, including the subsidiaries listed in the table below. This inventory has been prepared for the financial year 1 July 2023 to 30 June 2024.

The greenhouse gases included in the inventory include all those that are reported under the Kyoto Protocol: carbon dioxide (CO₂), methane (CH₄), nitrous oxide (N₂O), hydrofluorocarbons (HFCs), perfluorocarbons (PFCs), sulphur hexafluoride (SF₆). All emissions are reported in tonnes of carbon dioxide equivalent (t CO₂e) and uses relative global warming potentials (GWPs).

This Public Disclosure Statement includes information for FY24 reporting period.

Fable Food also has two Climate Active Product Certifications of which emissions have been included within this report, however are separate PDSs for the FY2023/24 reporting period.

Organisation description

Forged from shiitake mushrooms, Fable is goodness unearthed. It's real food, real mushrooms, but better.

Our mission is to make food healthier and more sustainable, by making delicious food from mushrooms. We are reimagining mushrooms, improving their texture and elevating their natural flavours and nutrients to become a succulent, umami-rich culinary protein.

Made with all natural plant-based ingredients, the Fable range of mushroom-based products are made from agriculturally-grown mushrooms that undergo a proprietary method with minimal processing to draw out the delicious, umami flavours and nutrients of mushrooms.

The emissions boundary has been defined based on the operational control approach. The boundary comprises the operations of Fable Holdings (ABN 32 636 627 542) and the associated subsidiaries below.

The following subsidiaries are also included within this certification:

Legal entity name	ABN
Fable Food USA, Inc.	D-U-N-S No. 119011973
Fable Food Pty Ltd	ABN 95 632 438 094)
Fable Food UK Limited	Registered No. 13438891

The emissions boundary includes emissions from the following 3 locations that Fable Holdings operated out of in FY24:

- 146 McKees Rd, Hunchy QLD 4555, Australia
- 3828 Kennett Pike suite 212, Wilmington, DE 19807, USA¹
- 10 John St, London WC1N 2EB, UK

¹ There was a change in the USA location from 1644 Platte St suite 400, Denver, CO 80202, USA in FY23 to 3828 Kennett Pike suite 212, Wilmington, DE 19807, USA in FY24

Inside the emissions boundary

All emission sources listed in the emissions boundary are part of the carbon neutral claim.

Quantified emissions have been assessed as relevant and are quantified in the carbon inventory. This may include emissions that are not identified as arising due to the operations of the certified entity, however are **optionally included**.

Non-quantified emissions have been assessed as relevant and are captured within the emissions boundary, but are not measured (quantified) in the carbon inventory. All material emissions are accounted for through an uplift factor. Further detail is available at Appendix C.

Outside the emissions boundary

Excluded emissions are those that have been assessed as not relevant to an organisation's operations and are outside of its emissions boundary or are outside of the scope of the certification. These emissions are not part of the carbon neutral claim. Further detail is available at Appendix D.

Inside emissions boundary		Outside emission boundary
<p><u>Quantified</u></p> <p>Accommodation and facilities</p> <p>Climate Active carbon neutral products and services</p> <p>Co-working desk</p> <p>Food</p> <p>ICT services and equipment</p> <p>Manufacturing (3rd party)*</p> <p>Non-company owned vehicles</p> <p>Office equipment and supplies</p> <p>Packaging materials*</p> <p>Postage, courier, and freight</p> <p>Professional services</p> <p>Raw materials*</p> <p>Transport (air)</p> <p>Transport (land and sea)*</p> <p>Venue hire</p> <p>Warehouse (3rd party)*</p> <p>Waste*</p> <p>Working from home</p>	<p><u>Non-quantified</u></p> <p>N/A</p>	<p><u>Excluded</u></p> <p>N/A</p>
	<p><u>Optionally included</u></p> <p>N/A</p>	

*Emission sources that also include the emissions associated with Fable Food's Product Certifications.

3.EMISSIONS REDUCTIONS

Emissions reduction strategy

As part of our commitment to sustainability and environmental responsibility, Fable Holdings recognizes the urgent need to address and reduce GHG emissions associated with our professional services. This Emission Reduction Strategy outlines our measures, targets, and actions to contribute to a more sustainable future.

Fable Holdings commits to a quantified and time-bound emissions reduction target:

Target: Reduce all emissions in our value chain by 20% by 2030.

Baseline Year: 2023

Sub-Targets:

Scope 1 and 2 emissions: Fable Holdings does not have any Scope 1 and 2 emissions

Scope 3: emissions reduced by 20% by 2030 by engage with carbon neutral businesses and engage with our supply chain to provide GHG emissions inventory associated with your service/product.

Professional Services

Fable Holdings is committed to reducing emissions across our entire value chain. A key area for reduction is within the professional service firms we currently partner with. Moving forward, Fable Holdings will implement a policy to preference the use of professional service firms who have also made sustainability and carbon neutral commitments.

Fable Holdings has set an emissions reduction target to reduce professional services emissions by 20% from its base year emissions inventory by 2030.

Fable Holdings will strive to reduce emissions on average over time. If emissions rise during a reporting period, we commit to providing transparent explanations for the increase, such as business growth, increased travel, or transportation, including previously excluded emissions sources.

Emissions reduction actions

- Fable Holdings in 2024 have implemented a policy to preference the use of professional service firms who have also made sustainability commitments that align with our strategy.
- When travelling for business purposes, Fable Holdings encourages staff to select the least emission intensive mode of travel. Such as choosing economy over business class flights
- Fable Holdings encourages staff to conduct meetings via teleconference rather than in person.
- Provide employees with resources to improve energy efficiency in their home offices, such as using energy-efficient equipment and reducing unnecessary energy consumption.

4.EMISSIONS SUMMARY

Emissions over time

Emissions since base year			
		Total tCO ₂ -e (without uplift)	Total tCO ₂ -e (with uplift)
Base year/Year 1:	FY2023	1215.45	1,216.77
Year 2:	FY2024	1764.53	N/A

Significant changes in emissions

Significant changes in emissions			
Emission source	Previous year emissions (t CO ₂ -e)	Current year emissions (t CO ₂ -e)	Reason for change
Air Travel	172.44	278.14	Company growth, business needs
Manufacturing (3rd party)	222.08	323.17	Organic growth
Raw Materials - Product LCA	202.42	265.79	Organic growth
Freight - Product LCA	52.08	346.87	R&D development and trial

Use of Climate Active carbon neutral products, services, buildings or precincts

Certified brand name	Product/Service/Building/Precinct used
Qantas	Service

Emissions summary

	Sum of Scope 1 emissions (tCO ₂ -e)	Sum of Scope 2 emissions (tCO ₂ -e)	Sum of Scope 3 emissions (tCO ₂ -e)	Sum of Total emissions (t CO ₂ -e)
Accommodation and facilities ²	0.00	0.00	25.15	25.15
Cleaning and chemicals	0.00	0.00	0.00	0.00
Climate Active carbon neutral products and services	0.00	0.00	0.00	0.00
Construction materials and services	0.00	0.00	0.00	0.00
Electricity	0.00	0.00	0.00	0.00
Food	0.00	0.00	16.00	16.00
Horticulture and agriculture	0.00	0.00	0.00	0.00
ICT services and equipment	0.00	0.00	24.91	24.91
Machinery and vehicles	0.00	0.00	0.00	0.00
Office equipment and supplies	0.00	0.00	3.69	3.69
Postage, courier and freight*	0.00	0.00	391.83	391.83
Products*	0.00	0.00	844.39	844.39
Professional services	0.00	0.00	136.04	136.04
Refrigerants	0.00	0.00	0.00	0.00
Roads and landscape	0.00	0.00	0.00	0.00
Stationary energy (gaseous fuels)	0.00	0.00	0.00	0.00
Stationary energy (liquid fuels)	0.00	0.00	0.00	0.00
Stationary energy (solid fuels)	0.00	0.00	0.00	0.00
Transport (air)	0.00	0.00	248.50	248.50
Transport (land and sea)	0.00	0.00	20.17	20.17
Waste*	0.00	0.00	34.28	34.28
Water	0.00	0.00	0.00	0.00
Working from home	0.00	0.00	19.56	19.56
Grand Total	0.00	0.00	1,764.53	1,764.53

*Emission sources that also include the emissions associated with Fable Food's Product Certifications.

Uplift factors

N/A

² The emissions from co-working desk spaces have been included under the 'Accommodation and facilities' emission category. This is due to the assumption that the co-working spaces use a combination of energies like electricity, gas and dry wood to power the space. As we have not been provided a split of the energies used to make accurate attributions, we have placed the emissions under Accommodation and facilities as this category would incur a similar mix of energy.

5.CARBON OFFSETS

Eligible offsets retirement summary

Offsets retired for Climate Active certification

Type of offset unit	Quantity used for this reporting period	Percentage of total units used
Certified Emissions Reductions (CERs)	1765	100%

Project name	Type of offset unit	Registry	Date retired	Serial number	Vintage	Total quantity retired	Quantity used in previous reporting periods	Quantity banked for future reporting periods	Quantity used for this reporting period	Percentage of total used this reporting period
Cepco Wind Power Project in Rajasthan	CER	ANREU	18/12/2024	297327560-297329324	CP2	1765	0	0	1765	100.00%

Note: All emissions associated with Fable Food's Product Certifications are captured in the organisation boundary and have been offset in this certification.

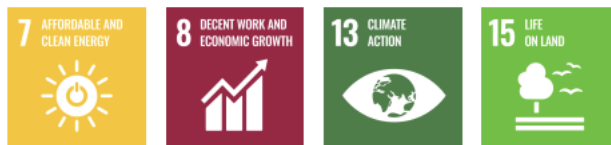
Co-benefits

Cepco Wind Power Project Rajasthan, India

Across India, wind farms introduce clean energy to the grid which would otherwise be generated by coal-fired power stations. Wind power is clean in two ways: it produces no emissions and also avoids the local air pollutants associated with fossil fuels. Electricity availability in the regions have been improved, reducing the occurrence of blackouts across the area.

The projects support national energy security and strengthen rural electrification coverage. In constructing the turbines new roads were built, improving accessibility for locals. The boost in local employment by people engaged as engineers, maintenance technicians, 24-hour on-site operators and security guards also boosts local economies and village services.

The project meets the following Sustainable Development Goals:




7. RENEWABLE ENERGY CERTIFICATE (REC) SUMMARY

Renewable Energy Certificate (REC) summary

N/A

APPENDIX A: ADDITIONAL INFORMATION



**Australian
National Registry
of Emissions Units**

ANREU Home
Account Holders
Accounts
Unit Position Summary
Projects
Transaction Log
CER Notifications
Public Reports
My Profile

Logged in as: Annabelle Gurney / Industry User

Transaction Details

Transaction details appear below.

Transaction ID	AU38246
Current Status	Completed (4)
Status Date	18/12/2024 12:09:57 (AEDT) 18/12/2024 01:09:57 (GMT)
Transaction Type	Cancellation (4)
Transaction Initiator	Gurney, Annabelle
Transaction Approver	Chandra, Kristie
Comment	Retired on behalf of FABLE HOLDINGS PTY LTD for its FY24 organisational and product emissions.

Transferring Account

Account Number	AU-3255
Account Name	Tasman Environmental Markets Australia Pty Ltd
Account Holder	Tasman Environmental Markets Australia Pty Ltd

Acquiring Account

Account Number	AU-2764
Account Name	Voluntary Cancellation – CP2
Account Holder	Commonwealth of Australia

Transaction Blocks

Party	Type	Transaction Type	Original CP	Current CP	ERF Project ID	NGER Facility ID	NGER Facility Name	Safeguard	Kyoto Project #	Vintage	Expiry Date	Serial Range	Quantity
IN	CER	Kyoto Voluntary Cancellation	2	2					IN-4942			297,327,560 - 297,329,324	1,765

APPENDIX B: ELECTRICITY SUMMARY

For this certification, electricity emissions have not been calculated separately as Fable Foods do not have direct operational control. All Fable Foods offices are within co-working spaces and use 3rd party manufacturing and warehouses for the product. Fable Foods does not have direct responsibility for managing or paying the associated utility bills. Electricity emissions with other emission sources such as natural gas etc. have been estimated and included in the emissions for co-working, manufacturing (3rd party) and warehouses (3rd party).

APPENDIX C: INSIDE EMISSIONS BOUNDARY

Non-quantified emission sources

N/A

Data management plan for non-quantified sources

There are no non-quantified sources in the emission boundary that require a data management plan.

APPENDIX D: OUTSIDE EMISSIONS BOUNDARY

Excluded emission sources

N/A

Excluded emissions sources summary

N/A



An Australian Government Initiative

