



# **PUBLIC DISCLOSURE STATEMENT**


**LA TROBE UNIVERSITY – SHEPPARTON  
CAMPUS**

**PRECINCT CERTIFICATION  
CY2024**

Australian Government

# Climate Active Public Disclosure Statement



|                          |   |                        |
|--------------------------|---|------------------------|
| NAME OF CERTIFIED ENTITY | La Trobe University - Shepparton Campus   |                        |
| REPORTING PERIOD         | Calendar year 1 January 2024 – 31 December 2024<br>Arrears report   |                        |
| DECLARATION              | <p><i>To the best of my knowledge, the information provided in this public disclosure statement is true and correct and meets the requirements of the Climate Active Carbon Neutral Standard.</i></p>  |                        |
|                          | Name of signatory   | Professor Theo Farrell |
|                          | Position of signatory   | Vice-Chancellor        |
|                          | Date  | 21 January 2026        |



Australian Government

---

Department of Climate Change, Energy,  
the Environment and Water

Public Disclosure Statement documents are prepared by the submitting organisation. The material in the Public Disclosure Statement document represents the views of the organisation and do not necessarily reflect the views of the Commonwealth. The Commonwealth does not guarantee the accuracy of the contents of the Public Disclosure Statement document and disclaims liability for any loss arising from the use of the document for any purpose.

Version 9.1.



# 1.CERTIFICATION SUMMARY

|                        |   |
|------------------------|---|
| TOTAL EMISSIONS OFFSET | 239.08 tCO <sub>2</sub> -e  |
| CARBON OFFSETS USED    | 100% VCUs   |
| RENEWABLE ELECTRICITY  | 28.49%  |
| CARBON ACCOUNT         | Prepared by:<br>Name: Xiao Yan Li<br>Organisation: La Trobe University<br>Date: 01/04/2025  |
| TECHNICAL ASSESSMENT   | Date: 05/05/2025<br>Name: Jessica Antunes<br>Organisation: ERM Energetics Pty Ltd<br>Next technical assessment due: CY2027 Report |
| THIRD PARTY VALIDATION | Type 2<br>Date: 05/05/2025<br>Organisation: RSM Australia Pty Ltd   |

## Contents

|   |    |
|---|----|
| 1. Certification summary.....                       | 3  |
| 2. Certification information.....                   | 4  |
| 3. Emissions boundary.....                          | 5  |
| 4. Emissions reductions .....                       | 8  |
| 5. Emissions summary .....                          | 10 |
| 6. Carbon offsets.....                              | 13 |
| 7. Renewable Energy Certificate (REC) Summary ..... | 17 |
| Appendix A: Additional Information.....             | 18 |
| Appendix B: Electricity summary.....                | 19 |
| Appendix C: Inside emissions boundary .....         | 23 |
| Appendix D: Outside emissions boundary .....        | 24 |

## 2. CERTIFICATION INFORMATION

### Description of precinct certification

This precinct certification is for the La Trobe University – Shepparton Campus.

The responsible entity for this precinct certification is La Trobe University – Shepparton Campus, ABN 64 804 735 113.

This Public Disclosure Statement includes information for CY2024 reporting period.

### Precinct geographical boundary

La Trobe University has committed to being at the forefront of addressing key global issues. As such, social and environmental sustainability is embedded into its operations, curriculum and research.

Aligned with its sustainable practices, the University has set a target to become carbon neutral by 2029 and make the regional campuses carbon neutral by 2022.

The Shepparton campus was established in 1994 and plays a vital role in helping the local community to thrive. The campus provides people in the region with world-class education that is delivered locally.

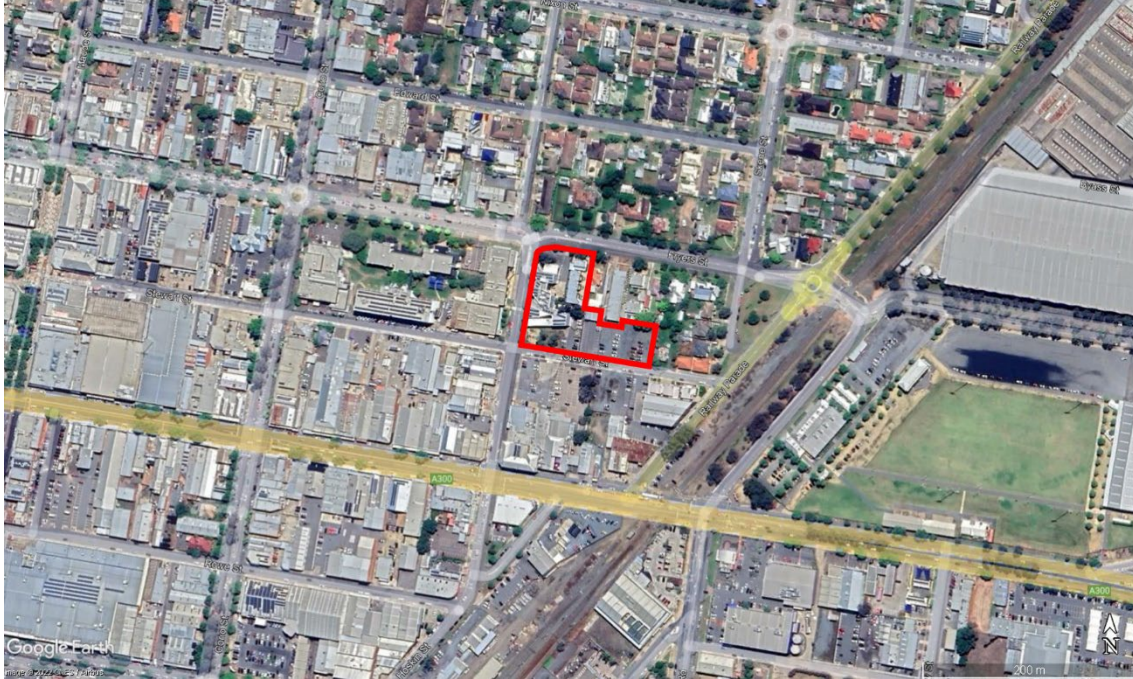
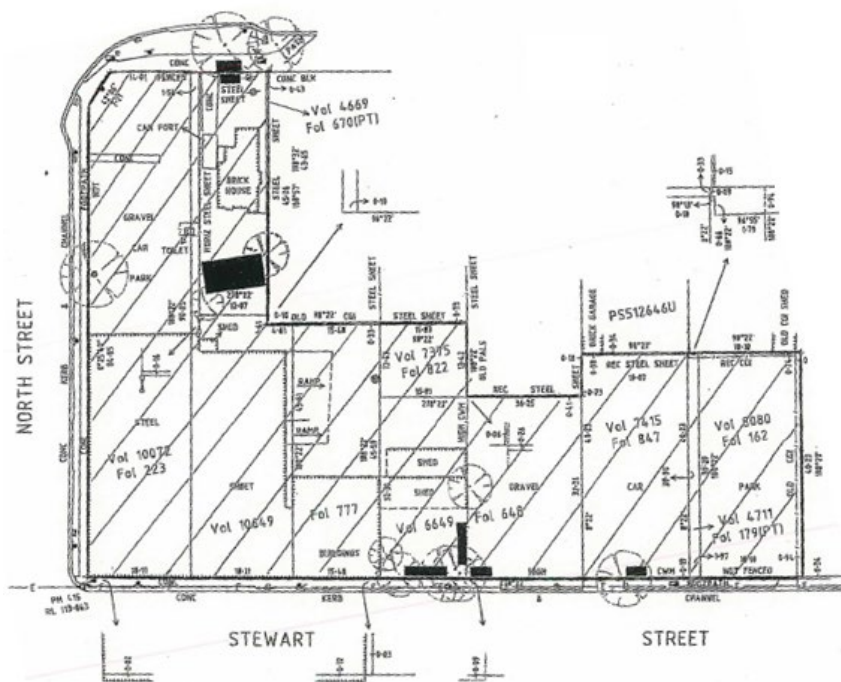
The campus is a modern facility, with teaching, study and communal meeting spaces, a clinical learning unit with advanced teaching technologies and a vibrant café. Student and staff housing accommodation is also available in Shepparton for short- and long-term stays.

The precinct is located at 210 Fryers Street, Shepparton. The geographic boundaries are illustrated in Figure 1 and Figure 2, aligned with the property title and community expectations. The total Gross Floor Area (GFA) is approximately 2,161<sup>2</sup> and the precinct has been fully developed, with no further construction currently expected.

Significant redevelopment works were undertaken in 2024. The building extension did not extend beyond the original property title. The professional staff worked within the original campus building for the duration of the 2024 calendar year.

The teaching activities were relocated out of the primary campus for the 2024 calendar year into a part of the 151 Fryers Street building. La Trobe received billing and electricity data for this period, for the La Trobe usage share. The end date of occupation was 19 December 2024. However, electricity usage for this external site has been excluded as it is outside the precinct boundaries.

The Shepparton Campus was officially reopened in January 2025.

Figure 1: Approximate geographic boundaries of Shepparton Campus Precinct<sup>1</sup>Figure 2: Property title of Shepparton Campus Precinct<sup>2</sup>

<sup>1</sup> Source: Map of Shepparton Campus exported from Google Earth Pro

<sup>2</sup> Source: Property title of Shepparton Campus provided by La Trobe University

## 3.EMISSIONS BOUNDARY

### Inside the emissions boundary

All emission sources listed in the emissions boundary are part of the carbon neutral claim.

**Quantified emissions** have been assessed as relevant and are quantified in the carbon inventory. This may include emissions that are not identified as arising due to the operations of the certified entity, however are **optionally included**.

**Non-quantified emissions** have been assessed as relevant and are captured within the emissions boundary, but are not measured (quantified) in the carbon inventory. All material emissions are accounted for through an uplift factor. Further detail is available at Appendix C.

### Outside the emissions boundary

**Excluded emissions** are those that have been assessed as not relevant to a precinct's operations and are outside of its emissions boundary or are outside of the scope of the certification. These emissions are not part of the carbon neutral claim. Further detail is available at Appendix D.

| Inside emissions boundary      |                            | Outside emission boundary         |
|--------------------------------|----------------------------|-----------------------------------|
| <u>Quantified</u>              | <u>Non-quantified</u>      | <u>Excluded</u>                   |
| Natural gas                    | Taxi                       | Student commute                   |
| Transport fuel use (fleet)     |                            | Food & catering                   |
| Air transport                  |                            | Refrigerants                      |
| Electricity                    |                            | Office furniture and IT equipment |
| Water and wastewater treatment |                            | Cleaning services                 |
| Waste to landfill              |                            | Investments                       |
| Recycled waste                 |                            |                                   |
| Office paper                   |                            |                                   |
| Staff commute                  |                            |                                   |
| Working from home              |                            |                                   |
| Business travel accommodation  |                            |                                   |
| Courier services               |                            |                                   |
|                                | <u>Optionally included</u> |                                   |
|                                | N/A                        |                                   |

## 4. EMISSIONS REDUCTIONS

### Emissions reduction strategy

In 2019, La Trobe University made the ambitious commitment to become carbon neutral by 2029, with its four regional campuses to achieve this target in 2022. As a university with a long and proud history of pursuing sustainable practice, La Trobe recognises the social, environmental and economic importance of reducing its carbon footprint through onsite renewable generation and adopting energy efficient and new technologies.

All four of the University's regional campuses, Mildura, Shepparton, Bendigo and Albury-Wodonga reached carbon neutrality and certification with Climate Active. A range of projects have been implemented at these campuses, including the installation of rooftop solar panels, energy efficient LED lights, mechanical system efficiency upgrades, and batteries to store solar energy. These projects have reduced carbon emissions at these campuses by a significant margin.

La Trobe is committed to further projects to reduce emissions and increase onsite renewable generation. These projects will assist La Trobe to meet its forward-looking commitments to:

- La Trobe University commits to reduce Scope 1 and 2 emissions by 100% by 2029, from a 2019 base year
- Increase onsite renewable generation for all campuses combined by 50% by 2025, from a 2019 baseline year.
- Reduce Scope 3 emissions from passenger vehicle fleet by 90% by 2025, from a 2019 baseline year.

For La Trobe, the focus has been on reducing its scope 1 and 2 emissions through investment in onsite renewables generation and energy efficiency projects. La Trobe is also mitigating future impacts by improving its underlying impact through design for new projects – The 6-star Green Star Sports Stadium as an example. La Trobe will continue its investment into green energy purchasing and renewable energy as much as feasibly and economically possible.

To find out more about La Trobe's Net Zero strategy:

<https://www.latrobe.edu.au/sustainability/net-zero>

In 2025, La Trobe has changed the baseline year for its Shepparton and Mildura Campuses from 2021 to 2022. Campus operations were impacted by COVID-19 during 2021 and LTU believes 2022 is an accurate representation of the university's normal operating conditions.



## Emissions reduction actions

In 2024, the Shepparton Campus underwent a major redevelopment which completed in January 2025. As part of the emissions reduction program, this redevelopment included the removal of all gas infrastructure, and installation of upgraded energy efficiency HVAC.

In 2024, La Trobe secured a Power Purchasing Agreement with Iberdrola that supplied 100% of Shepparton Campus' electricity from a renewable source.

## 5.EMISSIONS SUMMARY

### Emissions over time

| Emissions since base year |      |   |  |
|---------------------------|------|---|--|
|                           |      | Total tCO <sub>2</sub> -e<br>(without uplift) | Total tCO <sub>2</sub> -e<br>(with uplift) |
| Year 1:                   | 2021 | 258.50  | N/A  |
| Base Year<br>/ Year 2:    | 2022 | 352.76  | N/A  |
| Year 3:                   | 2023 | 266.86  | N/A  |
| Year 4:                   | 2024 | 239.08  | N/A  |

The baseline year has been changed from 2021 to 2022. LTU believes operations in 2022 are a more accurate representation of the university's normal operating conditions as 2021 was impacted by COVID-19.

### Significant changes in emissions

| Significant changes in emissions           |  |   |   |
|--|--|---|---|
| Emission source                            | Previous year<br>emissions<br>(t CO <sub>2</sub> -e) | Current year<br>emissions<br>(t CO <sub>2</sub> -e) | Reason for change   |
| Electricity (market-based method, scope 2) | 115.05   | 91.89   | Significant redevelopment works undertaken in 2024, where the campus was not in operation for a period of time. However, the teaching activities at Shepparton were relocated out of the primary campus for the 2024 calendar year into a part of 151 Fryers Street building. The end date of occupation was 19 December 2024. La Trobe received billing and electricity data for this period, for the La Trobe usage share and it is not included in the calculation as it is outside the precinct boundary. |
| Medium Car: unknown fuel                   | 21.90  | 24.26   | Calculation methods were amended to 87% from 84% of staff commute by car as accurately reflected by the ABS 2021  |

Shepparton data published.

## Use of Climate Active carbon neutral products, services, buildings or precincts

N/A.

## Emissions summary

The electricity summary is available in Appendix B. Electricity emissions were calculated using a market-based approach.

| Emission category                                   | Scope 1 emissions<br>(tCO <sub>2</sub> -e) | Scope 2 emissions<br>(tCO <sub>2</sub> -e) | Scope 3 emissions<br>(tCO <sub>2</sub> -e) | Total emissions<br>(t CO <sub>2</sub> -e) |
|---|--|--|--|---|
| Accommodation and facilities                        | 0.00                                       | 0.00                                       | 0.68                                       | 0.68                                      |
| Cleaning and Chemicals                              | 0.00                                       | 0.00                                       | 0.00                                       | 0.00                                      |
| Climate Active carbon neutral products and services | 0.00                                       | 0.00                                       | 0.00                                       | 0.00                                      |
| Construction Materials and Services                 | 0.00                                       | 0.00                                       | 0.00                                       | 0.00                                      |
| Electricity   | 0.00                                       | 91.89                                      | 11.34                                      | 103.23                                    |
| Food  | 0.00                                       | 0.00                                       | 0.00                                       | 0.00                                      |
| Horticulture and Agriculture                        | 0.00                                       | 0.00                                       | 0.00                                       | 0.00                                      |
| ICT services and equipment                          | 0.00                                       | 0.00                                       | 0.00                                       | 0.00                                      |
| Machinery and vehicles                              | 0.00                                       | 0.00                                       | 0.00                                       | 0.00                                      |
| Office equipment & supplies                         | 0.00                                       | 0.00                                       | 0.46                                       | 0.46                                      |
| Postage, courier and freight                        | 0.00                                       | 0.00                                       | 0.24                                       | 0.24                                      |
| Products  | 0.00                                       | 0.00                                       | 0.00                                       | 0.00                                      |
| Professional Services                               | 0.00                                       | 0.00                                       | 0.00                                       | 0.00                                      |
| Refrigerants  | 0.00                                       | 0.00                                       | 0.00                                       | 0.00                                      |
| Roads and landscape                                 | 0.00                                       | 0.00                                       | 0.00                                       | 0.00                                      |
| Stationary Energy (gaseous fuels)                   | 80.42                                      | 0.00                                       | 6.24                                       | 86.66                                     |
| Stationary Energy (liquid fuels)                    | 0.00                                       | 0.00                                       | 0.00                                       | 0.00                                      |
| Stationary Energy (solid fuels)                     | 0.00                                       | 0.00                                       | 0.00                                       | 0.00                                      |
| Transport (Air)                                     | 0.00                                       | 0.00                                       | 0.19                                       | 0.19                                      |
| Transport (Land and Sea)                            | 3.55                                       | 0.00                                       | 26.32                                      | 29.86                                     |
| Waste   | 0.00                                       | 0.00                                       | 3.50                                       | 3.50                                      |

|  |              |              |              |               |
|--|--------------|--------------|--------------|---------------|
| Water                                      | 0.00         | 0.00         | 1.68         | 1.68          |
| Working from home                          | 0.00         | 0.00         | 12.59        | 12.59         |
| <b>Total emissions (tCO<sub>2</sub>-e)</b> | <b>83.97</b> | <b>91.89</b> | <b>63.23</b> | <b>239.08</b> |

## Uplift factors

N/A.

## 6. CARBON OFFSETS

### Eligible offsets retirement summary

Offsets retired for Climate Active certification

| Type of offset unit          | Quantity used for this reporting period | Percentage of total units used |
|------------------------------|---|--------------------------------|
| Verified Carbon Units (VCUs) | 240                                     | 100%                           |

| Project name   | Type of offset unit | Registry       | Date retired | Serial number  | Vintage | Total quantity retired | Quantity used in previous reporting periods | Quantity banked for future reporting periods | Quantity used for this reporting period | Percentage of total used this reporting period |
|--|---------------------|----------------|--------------|--|---------|------------------------|---|--|---|--|
| Bundled Solar Power Project by Solararise Indian Projects PVT. LTD | VCU                 | Verra Registry | 29/04/2024   | <a href="#">10730-245101275-245107774-VCS-VCU-997-VER-IN-1-1762-26042018-31122018-00</a> | 2018    | 6500                   | 6057  | 0  | 231 <sup>3</sup>                        | 96.25%   |
| Stapled to Greenfleet Offsets                                      |                     |                |              |  | 2024    |                        |   |  |   |  |

<sup>3</sup> Offset serial numbers #245107332 - #245107543 are allocated to the Mildura Campus CY2024 Arrears report. Offset serial numbers #245107544 - #245107774 are allocated to the Shepparton Campus CY2024 Arrears report. Offset serial numbers #245101275 - #245107331 have previously been used in the Bendigo Campus CY2023 Arrears certifications.

|  |     |                   |            |  |      |       |      |   |                |         |
|--|-----|-------------------|------------|--|------|-------|------|---|----------------|---------|
| Bundled Solar Power Project<br>by Solararise Indian Projects<br>PVT. LTD | VCU | Verry<br>Registry | 01/04/2025 | <a href="#">10731-<br/>245156726-<br/>245163537-<br/>VCS-VCU-<br/>997-VER-IN-<br/>1-1762-<br/>01012020-<br/>25082020-0</a> | 2020 | 6812  | 0    | 0 | 9 <sup>4</sup> | 3.75%   |
| Stapled to<br>Greenfleet Offset  |     |                   |            |  | 2024 |       |      |   |                |         |
| <b>Offset Totals:</b>  |     |                   |            |  |      | 13312 | 6057 | 0 | 240            | 100.00% |

<sup>4</sup>Offset Serial number #245156735 - #245163023 are allocated to the Bendigo Campus CY2024 Arrears Report, offset serial numbers #245163024 - #245163537 are allocated to the Albury Wodonga Campus CY2024 Arrears Report. Offset serial numbers #245156726 - #245156734 are allocated to the Shepparton Campus CY2024 Arrears Report.

## Stapled units summary

The below units have been 'stapled' to eligible Climate Active carbon offset units. Stapled units may represent a beneficial outcome, such as biodiversity protection or improved water quality. These purchases are additional to Climate Active program requirements.

Stapled units and their corresponding scheme or project have not been assessed by Climate Active against the offset integrity principles in the Climate Active Carbon Neutral Standards and are not included in the list of eligible Climate Active carbon offset units (Appendix A of the Standards). Businesses have undertaken their own due diligence when purchasing these stapled units.

| Project name                                   | Unit type<br>e.g. biodiversity | Project location           | Eligible offset project<br>stapled to                                    | Stapled quantity | Link to project or<br>evidence  |
|--|--------------------------------|----------------------------|--|------------------|---|
| Strzelecki Nature Link –<br>Greenfleet Offsets | Biodiversity                   | South Gippslands, Victoria | Bundled Solar Power<br>Project by Solararise<br>Indian Projects PVT. LTD | 6500             | <a href="https://www.greenfleet.com.au/blogs/forest/territory?_pos=1&amp;_psq=territoty&amp;_sse&amp;_v=1.0">https://www.greenfleet.com.au/blogs/forest/territory?_pos=1&amp;_psq=territoty&amp;_sse&amp;_v=1.0</a> |
| Strzelecki Nature Link –<br>Greenfleet Offsets | Biodiversity                   | South Gippslands, Victoria | Bundled Solar Power<br>Project by Solararise<br>Indian Projects PVT. LTD | 6812             | <a href="https://www.greenfleet.com.au/blogs/forest/territory?_pos=1&amp;_psq=territoty&amp;_sse&amp;_v=1.0">https://www.greenfleet.com.au/blogs/forest/territory?_pos=1&amp;_psq=territoty&amp;_sse&amp;_v=1.0</a> |

## Offsets retirement approach

This certification has taken an in-arrears offsetting approach. The total emissions to offset is 239.08t CO<sub>2</sub>-e. The total number of eligible offsets purchased for the Bundled Solar Power Project were 13312, in this report 240 have been used. Of the eligible offsets used in the Bundled Solar Power Project, 6057 were used for the Bendigo Campus for the CY2023 certification, with the remaining units used for the CY2024 certification including 212 used for the Mildura campus, 6289 used for the Bendigo Campus, and 514 used for the Albury Wodonga Campus. There are 0 remaining units in the Bundled Solar Power Project banked for future reports.

## Co-benefits

For CY2024 arrears report, La Trobe University purchased offsets for the Bundled Solar Power Project.

The Bundled Solar Power Project in India generates clean energy through renewable solar. The project involves installation of 120 MW solar project. Over the 10 years of first crediting period, the project will replace anthropogenic emissions of greenhouse gases. La Trobe University has retired 13312 credits for the Bundled Solar Power Project, all of which have been stapled to the Greenfleet Strzelecki Nature link revegetation project.



## 7. RENEWABLE ENERGY CERTIFICATE (REC) SUMMARY

### **Renewable Energy Certificate (REC) summary**

N/A.

## APPENDIX A: ADDITIONAL INFORMATION

### **Greenfleet Offsets**

La Trobe University has purchased one Greenfleet offset to accompany every VCU purchased from the Bundled Solar Power Project. For each Greenfleet offset purchased, Greenfleet will plant enough native trees to capture 1 tonne CO<sub>2</sub>-e.

Greenfleet is revegetating native ecosystem on 4 properties in South Gippsland, named the Strzelecki Nature Link. Once restored, the area will form a 3.5 kilometer stretch of continuous koala habitat with locally native tree species. The project will remove carbon and ensure safe passage for wildlife.

## APPENDIX B: ELECTRICITY SUMMARY

There are two international best-practice methods for calculating electricity emissions – the location-based method and the market-based method. Reporting electricity emissions under both methods is called dual reporting.

Dual reporting of electricity emissions is useful, as it provides different perspectives of the emissions associated with a business's electricity usage.

Location-based method:

The location-based method provides a picture of a business's electricity emissions in the context of its location, and the emissions intensity of the electricity grid it relies on. It reflects the average emissions intensity of the electricity grid in the location (State) in which energy consumption occurs. The location-based method does not allow for any claims of renewable electricity from grid-imported electricity usage.

Market-based method:

The market-based method provides a picture of a business's electricity emissions in the context of its renewable energy investments. It reflects the emissions intensity of different electricity products, markets and investments. It uses a residual mix factor (RMF) to allow for unique claims on the zero emissions attribute of renewables without double-counting.

For this certification, electricity emissions have been set by using the **market-based approach**.

| Market-based approach summary   |                     |                                   |                               |
|---|---------------------|-----------------------------------|-------------------------------|
| Market-based approach   | Activity Data (kWh) | Emissions (kg CO <sub>2</sub> -e) | Renewable percentage of total |
| Behind the meter consumption of electricity generated                       | 19,481              | 0                                 | 12%                           |
| <b>Total non-grid electricity</b>   | <b>19,481</b>       | <b>0</b>                          | <b>12%</b>                    |
| LGC Purchased and retired (kWh) (including PPAs)                            | 0                   | 0                                 | 0%                            |
| GreenPower  | 0                   | 0                                 | 0%                            |
| Climate Active precinct/building (voluntary renewables)                     | 0                   | 0                                 | 0%                            |
| Precinct/Building (LRET)  | 0                   | 0                                 | 0%                            |
| Precinct/Building jurisdictional renewables (LGCS surrendered)              | 0                   | 0                                 | 0%                            |
| Electricity products (voluntary renewables)                                 | 0                   | 0                                 | 0%                            |
| Electricity products (LRET)   | 0                   | 0                                 | 0%                            |
| Electricity products jurisdictional renewables (LGCs surrendered)           | 0                   | 0                                 | 0%                            |
| Jurisdictional renewables (LGCs surrendered)                                | 0                   | 0                                 | 0%                            |
| Jurisdictional renewables (LRET) (applied to ACT grid electricity)          | 0                   | 0                                 | 0%                            |
| Large Scale Renewable Energy Target (applied to grid electricity only)      | 25,717              | 0                                 | 16%                           |
| Residual Electricity  | 113,443             | 103,233                           | 0%                            |
| <b>Total renewable electricity (grid + non grid)</b>                        | <b>45,198</b>       | <b>0</b>                          | <b>28%</b>                    |
| <b>Total grid electricity</b>   | <b>139,160</b>      | <b>103,233</b>                    | <b>16%</b>                    |
| <b>Total electricity (grid + non grid)</b>                                  | <b>158,641</b>      | <b>103,233</b>                    | <b>28%</b>                    |
| Percentage of residual electricity consumption under operational control    | 100%                |                                   |                               |
| <b>Residual electricity consumption under operational control</b>           | <b>113,443</b>      | <b>103,233</b>                    |                               |
| Scope 2   | 100,977             | 91,889                            |                               |
| Scope 3 (includes T&D emissions from consumption under operational control) | 12,466              | 11,344                            |                               |
| <b>Residual electricity consumption not under operational control</b>       | <b>0</b>            | <b>0</b>                          |                               |
| Scope 3   | 0                   | 0                                 |                               |

|  |               |
|--|---------------|
| <b>Total renewables (grid and non-grid)</b>  | <b>28.49%</b> |
| <b>Mandatory</b>   | <b>16.21%</b> |
| <b>Voluntary</b>   | <b>0.00%</b>  |
| <b>Behind the meter</b>  | <b>12.28%</b> |
| <b>Residual scope 2 emissions (t CO<sub>2</sub>-e)</b>   | <b>91.89</b>  |
| <b>Residual scope 3 emissions (t CO<sub>2</sub>-e)</b>   | <b>11.34</b>  |
| <b>Scope 2 emissions liability (adjusted for already offset carbon neutral electricity) (t CO<sub>2</sub>-e)</b> | <b>91.89</b>  |
| <b>Scope 3 emissions liability (adjusted for already offset carbon neutral electricity) (t CO<sub>2</sub>-e)</b> | <b>11.34</b>  |
| <b>Total emissions liability (t CO<sub>2</sub>-e)</b>  | <b>103.23</b> |
| <i>Figures may not sum due to rounding. Renewable percentage can be above 100%</i>                               |               |

| Location-based approach summary                                      |                           |                           |  |  |                               |  |
|--|---------------------------|---------------------------|--|--|-------------------------------|--|
| Location-based approach  | Activity Data (kWh) total | Under operational control |  |  | Not under operational control |  |
| Percentage of grid electricity consumption under operational control | 100%                      | (kWh)                     | Scope 2 Emissions (kgCO <sub>2</sub> -e) | Scope 3 Emissions (kgCO <sub>2</sub> -e) | (kWh)                         | Scope 3 Emissions (kgCO <sub>2</sub> -e) |
| ACT  | 0                         | 0                         | 0  | 0  | 0                             | 0  |
| NSW  | 0                         | 0                         | 0  | 0  | 0                             | 0  |
| SA   | 0                         | 0                         | 0  | 0  | 0                             | 0  |
| VIC  | 139,160                   | 139,160                   | 109,936                                  | 9,741                                    | 0                             | 0  |
| QLD  | 0                         | 0                         | 0  | 0  | 0                             | 0  |
| NT   | 0                         | 0                         | 0  | 0  | 0                             | 0  |
| WA   | 0                         | 0                         | 0  | 0  | 0                             | 0  |
| TAS  | 0                         | 0                         | 0  | 0  | 0                             | 0  |
| <b>Grid electricity (scope 2 and 3)</b>                              | <b>139,160</b>            | <b>139,160</b>            | <b>109,936</b>                           | <b>9,741</b>                             | <b>0</b>                      | <b>0</b>                                 |
| ACT  | 0                         | 0                         | 0  | 0  |                               |  |
| NSW  | 0                         | 0                         | 0  | 0  |                               |  |
| SA   | 0                         | 0                         | 0  | 0  |                               |  |
| VIC  | 19,481                    | 19,481                    | 0  | 0  |                               |  |
| QLD  | 0                         | 0                         | 0  | 0  |                               |  |
| NT   | 0                         | 0                         | 0  | 0  |                               |  |
| WA   | 0                         | 0                         | 0  | 0  |                               |  |
| TAS  | 0                         | 0                         | 0  | 0  |                               |  |
| <b>Non-grid electricity (behind the meter)</b>                       | <b>19,481</b>             | <b>19,481</b>             | <b>0</b>                                 | <b>0</b>                                 |                               |  |
| <b>Total electricity (grid + non grid)</b>                           | <b>158,641</b>            |                           |  |  |                               |  |

|  |               |
|--|---------------|
| <b>Residual scope 2 emissions (t CO<sub>2</sub>-e)</b>   | <b>109.94</b> |
| <b>Residual scope 3 emissions (t CO<sub>2</sub>-e)</b>   | <b>9.74</b>   |
| <b>Scope 2 emissions liability (adjusted for already offset carbon neutral electricity) (t CO<sub>2</sub>-e)</b> | <b>109.94</b> |
| <b>Scope 3 emissions liability (adjusted for already offset carbon neutral electricity) (t CO<sub>2</sub>-e)</b> | <b>9.74</b>   |
| <b>Total emissions liability</b>   | <b>119.68</b> |

If your organisation does not use any Climate Active buildings or precincts, please add N/A to the first row, and delete the remaining empty rows.

### Operations in Climate Active buildings and precincts

| Operations in Climate Active buildings and precincts  | Electricity consumed in Climate Active certified building/precinct (kWh) | Emissions (kg CO <sub>2</sub> -e) |
|---|--|-----------------------------------|
| N/A   | 0  | 0                                 |
| Climate Active carbon neutral electricity is not renewable electricity. These electricity emissions have been offset by another Climate Active member through their building or precinct certification. This electricity consumption is also included in the market based and location-based summary tables. Any electricity that has been sourced as renewable electricity by the building/precinct under the market-based method is outlined as such in the market-based summary table. |  |                                   |

### Climate Active carbon neutral electricity products

| Climate Active carbon neutral electricity product used  | Electricity claimed from Climate Active electricity products (kWh) | Emissions (kg CO <sub>2</sub> -e) |
|---|--|-----------------------------------|
| N/A   | 0  | 0                                 |
| <i>Climate Active carbon neutral electricity is not renewable electricity. These electricity emissions have been offset by another Climate Active member through their electricity product certification. This electricity consumption is also included in the market based and location-based summary tables. Any electricity that has been sourced as renewable electricity by the electricity product under the market-based method is outlined as such in the market-based summary table.</i> |  |                                   |

## APPENDIX C: INSIDE EMISSIONS BOUNDARY

### Non-quantified emission sources

The following emissions sources have been assessed as relevant, are captured within the emissions boundary, but are not measured (quantified) in the carbon inventory. They have been non-quantified due to one of the following reasons:

1. **Immaterial** <1% for individual items and no more than 5% collectively
2. **Cost effective** Quantification is not cost effective relative to the size of the emission but uplift applied.
3. **Data unavailable** Data is unavailable but uplift applied. A data management plan must be put in place to provide data within 5 years.
4. **Maintenance** Initial emissions non-quantified but repairs and replacements quantified.

Taxi

- The emissions associated with taxi trips have been non-quantified in line with the provisions of CACNS. The emissions correspond to less than 1% of the total carbon account and are not considered material.

| Relevant non-quantified emission sources |  | Justification reason |
|--|--|----------------------|
| Taxi                                     |  | Immaterial           |

### Data management plan for non-quantified sources

There are no non-quantified sources in the emission boundary that require a data management plan.

## APPENDIX D: OUTSIDE EMISSIONS BOUNDARY

### Excluded emission sources

The below emission sources have been assessed as not relevant to this precinct's operations and are outside of its emissions boundary. These emissions are not part of the carbon neutral claim. Emission sources considered for relevance must be included within the certification boundary if they meet two of the five relevance criteria. Those which only meet one condition of the relevance test can be excluded from the certification boundary.

Emissions tested for relevance are detailed below against each of the following criteria:

1. **Size** The emissions from a particular source are likely to be large relative to the precinct's electricity, stationary energy and fuel emissions.
2. **Influence** The responsible entity has the potential to influence the reduction of emissions from a particular source.
3. **Risk** The emissions from a particular source contribute to the precinct's greenhouse gas risk exposure.
4. **Stakeholders** Key stakeholders deem the emissions from a particular source are relevant.
5. **Outsourcing** The emissions are from outsourced activities previously undertaken within the precinct's boundary, or from outsourced activities typically undertaken within the boundary for comparable precincts.



## Excluded emissions sources summary

| Emission sources tested for relevance | Size | Influence | Risk | Stakeholders | Outsourcing | Justification  |
|---------------------------------------|------|-----------|------|--------------|-------------|--|
| Student commute                       | Y    | N         | N    | N            | N           | <p>Size: La Trobe understand that the emissions from student commute may be substantial and material.</p> <p>Influence: La Trobe does not have the potential influence to mandate students' transportation of commute, or frequency of commute.</p> <p>Risk: There are no relevant laws or regulations that apply to limit emissions specifically from this source, the sources does not create supply chain risk and it is unlikely to be of significant public interest.</p> <p>Stakeholders: Key stakeholders, including the public, are unlikely to consider this a relevant source of emissions for our business.</p> <p>Outsourcing: We have not previously undertaken this activity within our emissions boundary and comparable universities do not typically undertake this activity within their boundary.</p> |
| Food & catering                       | N    | Y         | N    | N            | N           | <p>Size: The emissions from food and catering are unlikely to be material.</p> <p>Influence: La Trobe does have the potential to influence emissions from food and catering through procurement processes.</p> <p>Risk: There are no relevant laws or regulations that apply to limit emissions specifically from this source, the sources does not create supply chain risks and it is unlikely to be of significant public interest.</p> <p>Stakeholders: Key stakeholders, including the public, are unlikely to consider this a relevant source of emissions for our business.</p> <p>Outsourcing: We have not previously undertaken this activity within our emissions boundary and comparable universities do not typically undertake this activity within their boundary.</p>                                     |
| Refrigerants                          | N    | Y         | N    | N            | N           | <p>Size: The emissions from refrigerants are unlikely to be material.</p> <p>Influence: La Trobe will continue to attempt to influence emissions from use of refrigerants through design guidelines.</p> <p>Risk: The University complies with relevant laws and legislations on refrigerants that are acceptable to be used and does not create further emissions risks.</p> <p>Stakeholders: Key stakeholders are unlikely to consider this a relevant source of emissions for our business.</p> <p>Outsourcing: We have not previously undertaken this activity within our emissions boundary.</p>  |

| Emission sources tested for relevance | Size | Influence | Risk | Stakeholders | Outsourcing | Justification   |
|---------------------------------------|------|-----------|------|--------------|-------------|---|
| Office and IT equipment               | N    | Y         | N    | N            | N           | <p>Size: The emissions from Office and IT equipment is unlikely to be material.</p> <p>Influence: La Trobe can influence the emissions from office and IT equipment.</p> <p>Risk: There are no relevant laws or regulations that apply to limit emissions specifically from this source, the sources does not create supply chain risk and it is unlikely to be of significant public interest.</p> <p>Stakeholders: Key stakeholders, including the public, are unlikely to consider this a relevant source of emissions for our business.</p> <p>Outsourcing: We have not previously undertaken this activity within our emissions boundary.</p>  |
| Cleaning services                     | N    | Y         | N    | N            | N           | <p>Size: The emissions from cleaning services is unlikely to be material.</p> <p>Influence: La Trobe does have an influence over the procurement of the organisation engage for cleaning services.</p> <p>Risk: There are no relevant laws or regulations that apply to limit emissions specifically from this source, the source does not create supply chain risks, and it is unlikely to be of significant public interest.</p> <p>Stakeholders: Key stakeholders are unlikely to consider this a relevant source of emissions for our business</p> <p>Outsourcing: We have not previously undertaken this activity within our emissions boundary and comparable organisations do not typically undertake this activity within their boundary.</p>   |
| Investments                           | N    | N         | N    | Y            | N           | <p>Size: La Trobe University have an investment policy, which applies a framework in which the university only invest in companies that are equally committed to reducing their own carbon footprint in carbon emissions. Therefore, the materiality of the emissions associated with investments would be insignificant.</p> <p>Influence: La Trobe University have an investment policy, which outlines the responsible investment framework. The framework includes that climate change can impact investment risk and returns, and should be considered when selecting investments, and that investments are only for companies which are equally committed to reducing their carbon emissions footprint. Therefore, LTU has no further influence, on what the third parties of what they can invest in, other than our existing investment policy.</p> <p>Risks: Risk: There are no relevant laws or regulations that apply to limit emissions specifically from this source, the source does not create supply chain risks, and it is unlikely to be of significant public interest.</p> <p>Stakeholders: Investments are deemed a relevant source of emissions by key stakeholders.</p> <p>Outsourcing: We have not previously undertaken this activity within our emissions boundary and comparable organisations do not typically undertake this activity within their boundary.</p> |



An Australian Government Initiative

